

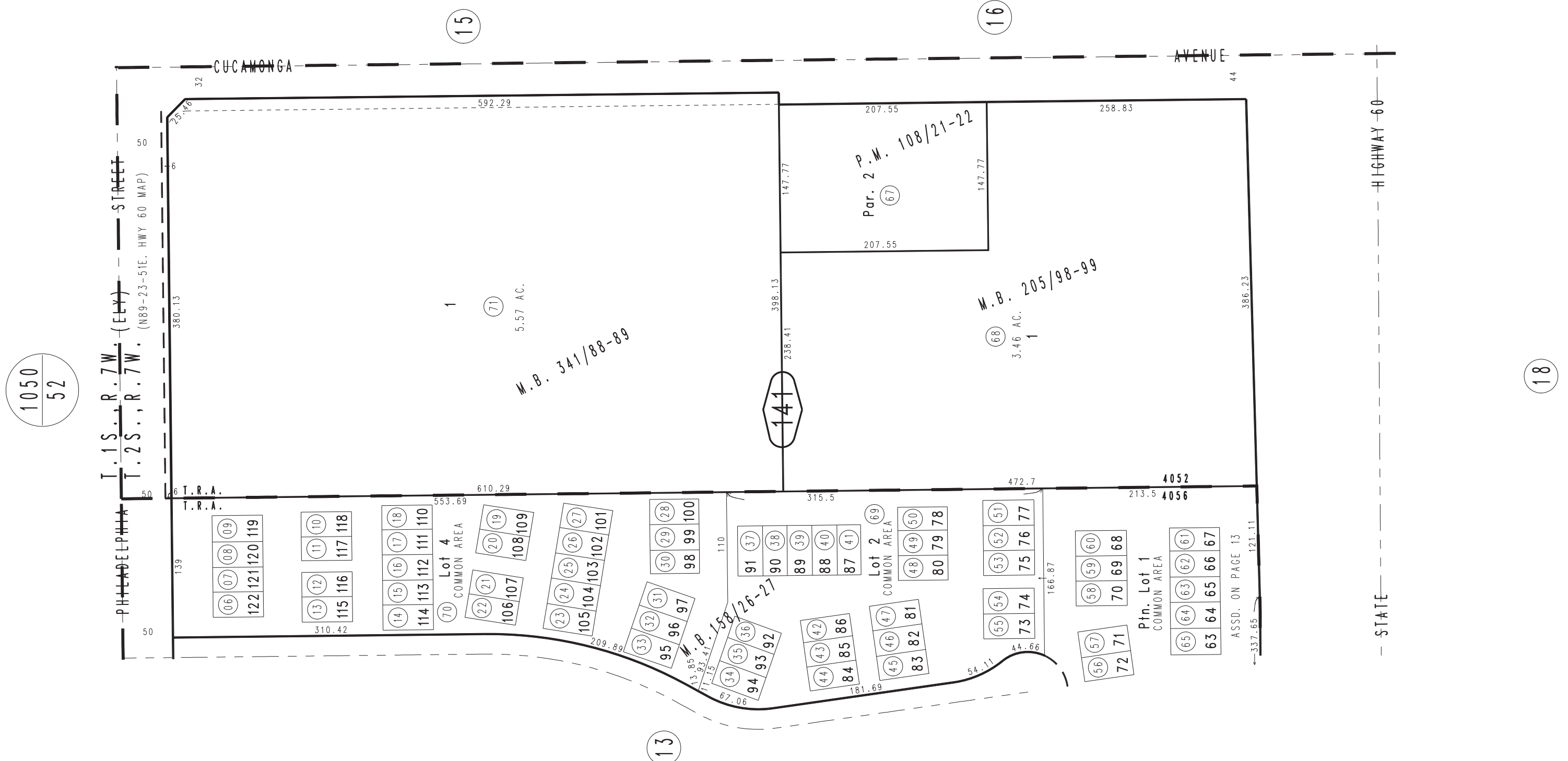
THIS MAP IS FOR THE PURPOSE  
OF AD VALOREM TAXATION ONLY.



# Ptn. Tract No. 11758, M.B. 158/26-27 Condominium Plans O.R. 81-143806,3809 & Ptn. 81-143805

City of Ontario  
Tax Rate Area  
4052 4056

1051 - 14



1050  
52

13

141

15

16

18

November 2004

Tract No. 18909, M.B. 341/88-89  
Tract No. 13567, M.B. 205/98-99  
Ptn. Parcel Map No. 9871, P.M. 108/21-22

Ptn. N.E.1/4, Sec.5  
T.2S.,R.7W.

Assessor's Map  
Book 1051 Page 14  
San Bernardino County

REVISED  
08/19/14 GW  
04/13/15 GW