

THIS MAP IS FOR THE PURPOSE
OF AD VALOREM TAXATION ONLY.

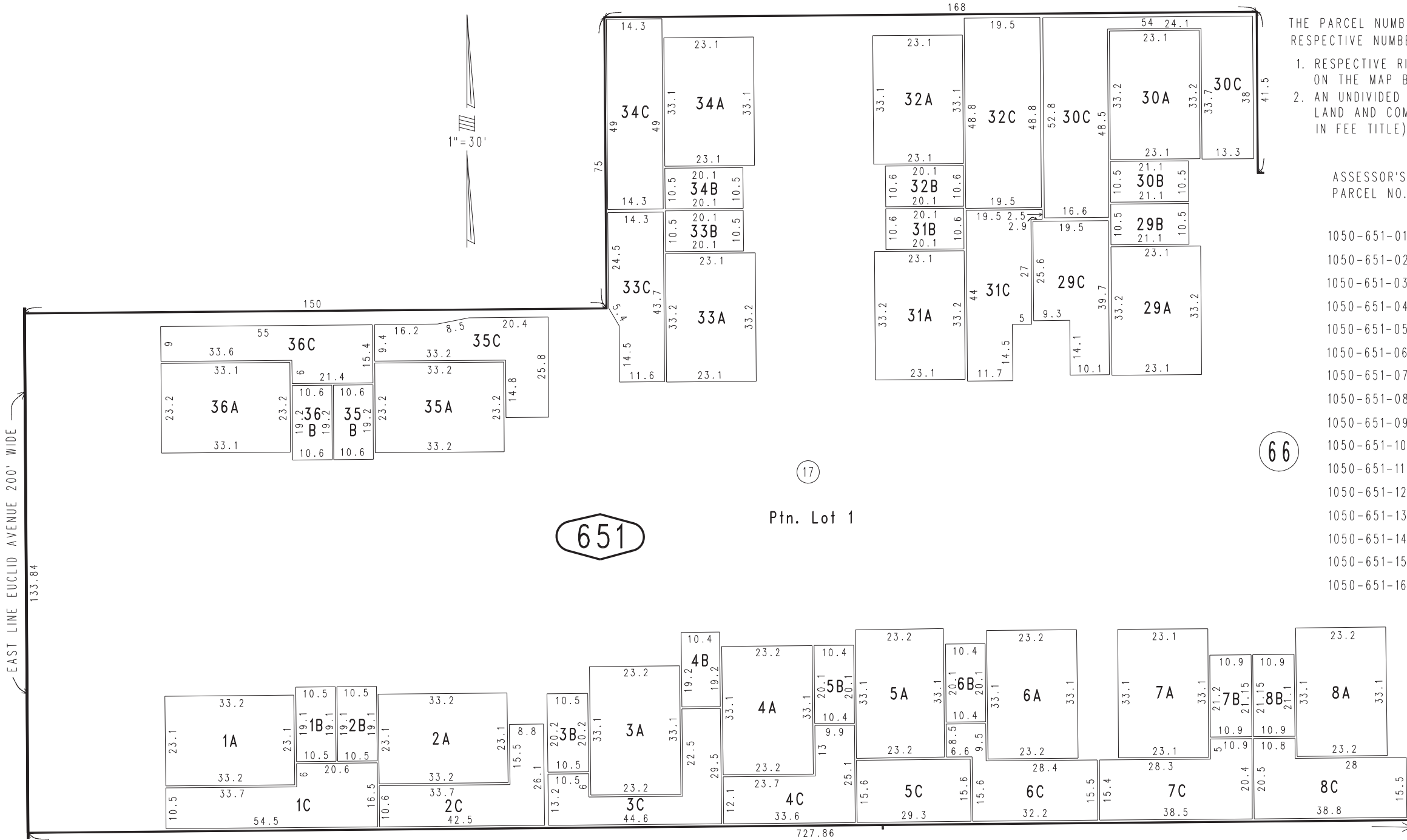
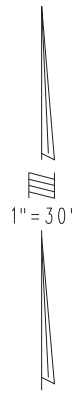
Ptn. Tract No. 7573, M.B. 95/66-67
And Condominium Plan Rec. O.R.
BK. 6508 PG. 474-476, BK. 6508 PG. 477-500

City of Ontario
Tax Rate Area
4000

1050 - 65



08



THE PARCEL NUMBERS SHOWN BELOW OPPOSITE THE
RESPECTIVE NUMBERED UNITS INCLUDE:

1. RESPECTIVE RIGHTS HELD IN FEE TITLE, AS IDENTIFIED ON THE MAP BY UNIT NUMBER, AND
2. AN UNDIVIDED INTEREST AS TENANT IN COMMON IN THE LAND AND COMMON AREAS (IMPROVEMENTS NOT HELD IN FEE TITLE)

ASSESSOR'S PARCEL NO.	NUMBERED UNIT	INTEREST IN LAND AND COMMON AREA
1050-651-01	1	1/36 INT.
1050-651-02	2	1/36 INT.
1050-651-03	3	1/36 INT.
1050-651-04	4	1/36 INT.
1050-651-05	5	1/36 INT.
1050-651-06	6	1/36 INT.
1050-651-07	7	1/36 INT.
1050-651-08	8	1/36 INT.
1050-651-09	29	1/36 INT.
1050-651-10	30	1/36 INT.
1050-651-11	31	1/36 INT.
1050-651-12	32	1/36 INT.
1050-651-13	33	1/36 INT.
1050-651-14	34	1/36 INT.
1050-651-15	35	1/36 INT.
1050-651-16	36	1/36 INT.

05

17

66

651

Ptn. Lot 1

07

A-DENOTES RESIDENTIAL UNIT
B-DENOTES GARAGE AREA
C-DENOTES PRIVATE YARD AND PATIO