

THIS MAP IS FOR THE PURPOSE OF AD VALOREM TAXATION ONLY.

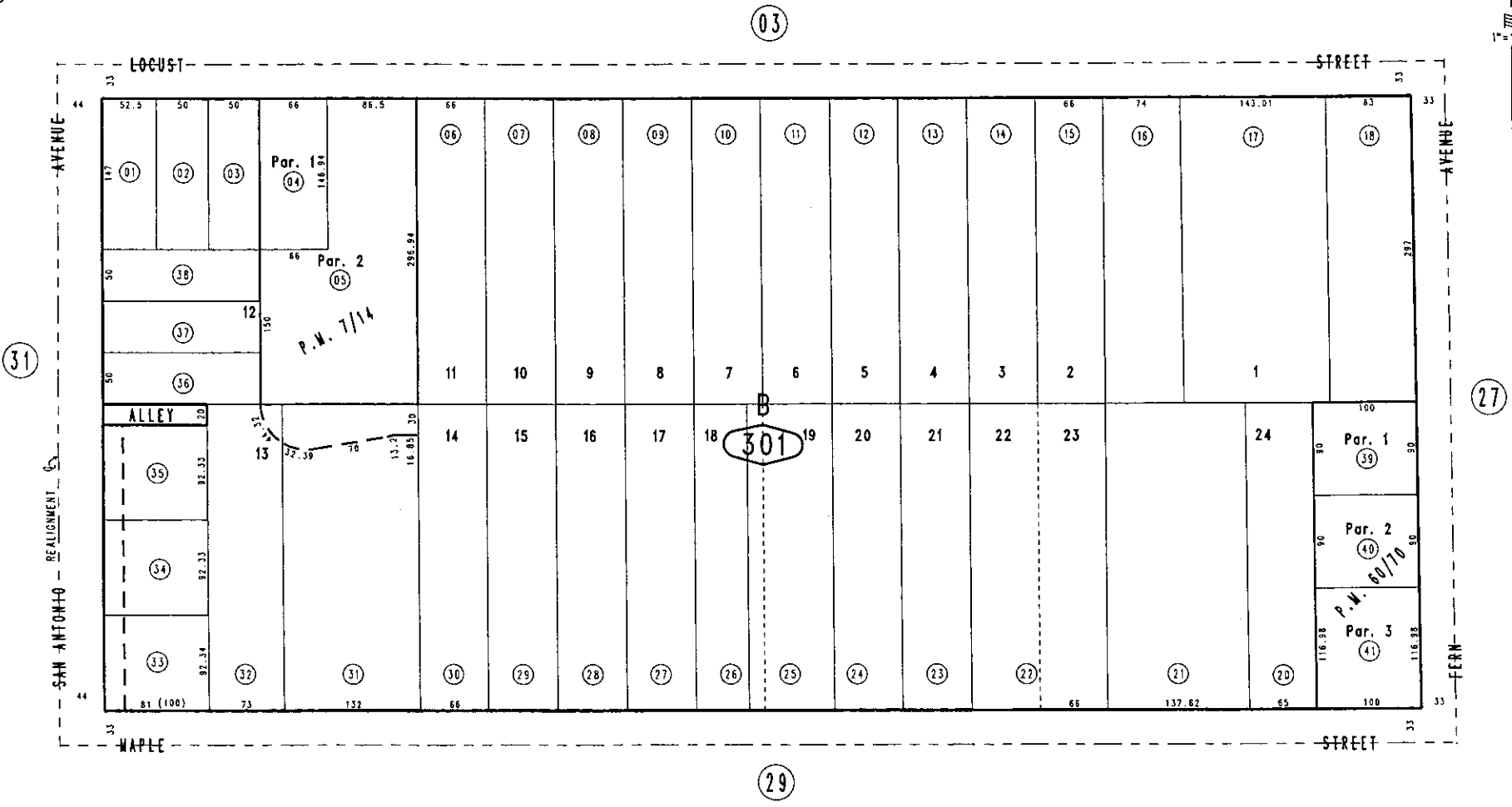
Ptn. Tract No. 2488, M.B. 35/46

City of Ontario
Tax Rate Area
4000

1050 - 30



1"=100'



October 2004

Parcel Map No. 5222, P.W. 60/70
Parcel Map No. 490, P.M. 7/14

Ptn. N.W.1/4, Sec.31
T.1S.,R.7W.

Assessor's Map
Book 1050 Page 30
San Bernardino County

REVISED