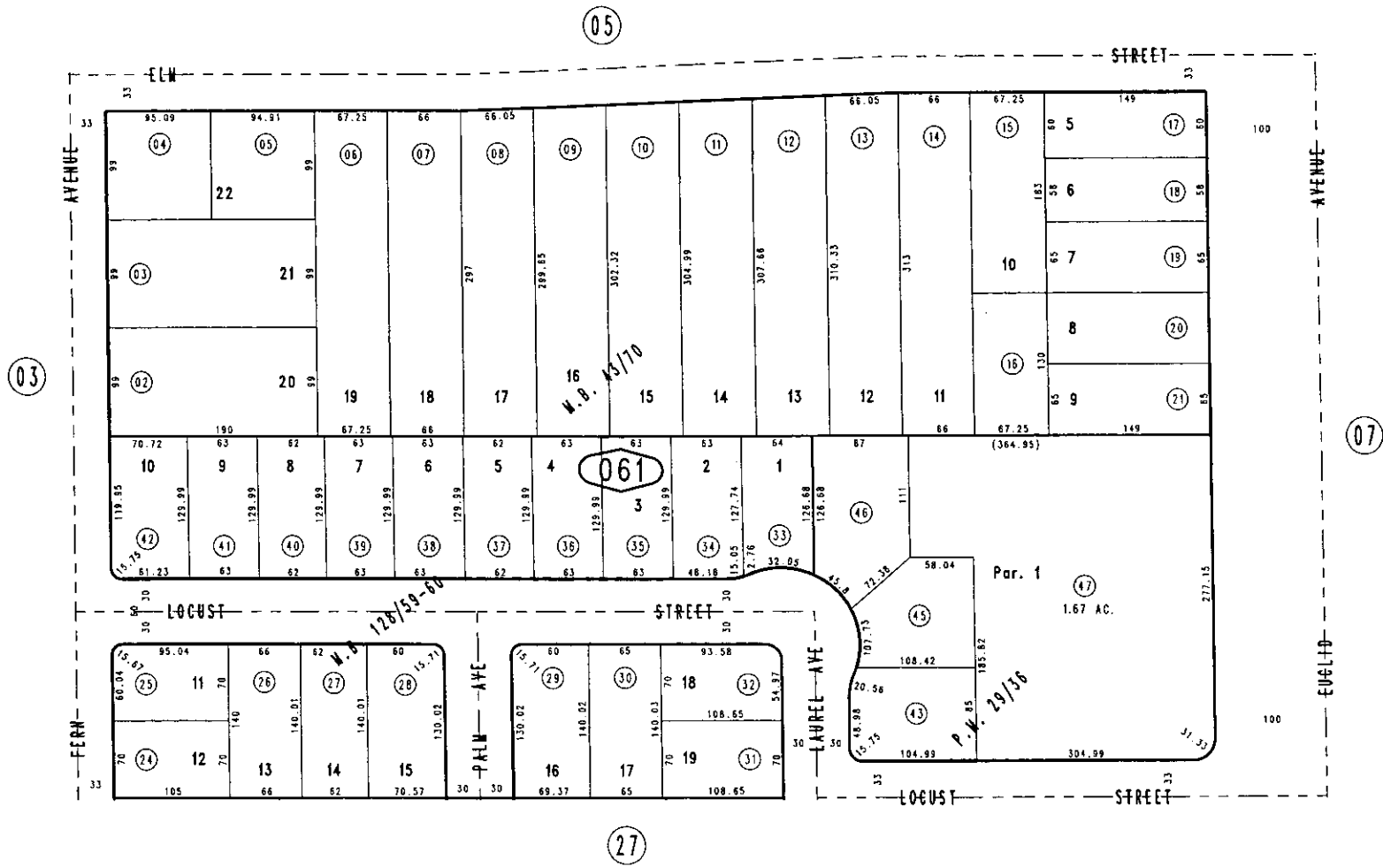
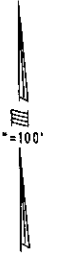


THIS MAP IS FOR THE PURPOSE  
OF AD VALOREM TAXATION ONLY.



October 2004

Parcel Map No. 3195, P.M. 29/36  
Tract No. 9173, M.B. 128/59-60

Ptn. N.E.1/4, Sec.31  
T.1S.,R.7W.

Assessor's Map  
Book 1050 Page 06  
San Bernardino County

REVISED