

THIS MAP IS FOR THE PURPOSE OF AD VALOREM TAXATION ONLY.

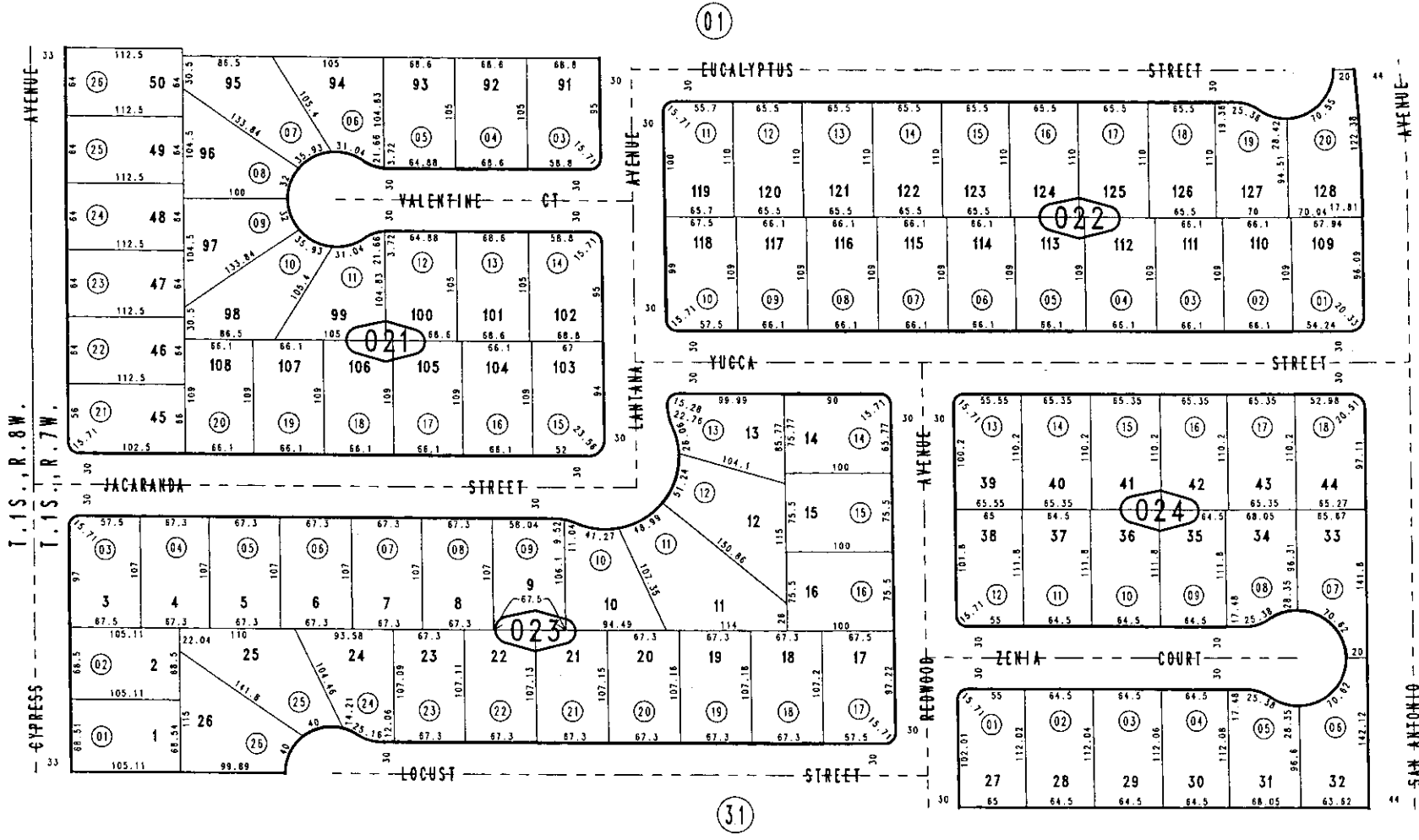
Ptn. Tract No. 9062, M.B. 125/26-32

City of Ontario
Tax Rate Area
4000

1050 - 02



1"=100'



1014
16

October 2004

Ptn. N.W.1/4, Sec.31
T.I.S., R.7W., S.B.B.&M.

Assessor's Map
Book 1050 Page 02
San Bernardino County

REVISED