

THIS MAP IS FOR THE PURPOSE OF AD VALOREM TAXATION ONLY.

# Ptn. Villa Plots, South Side Tract M.B. 6/11

City of Ontario  
Tax Rate Area  
4000

1049 - 51

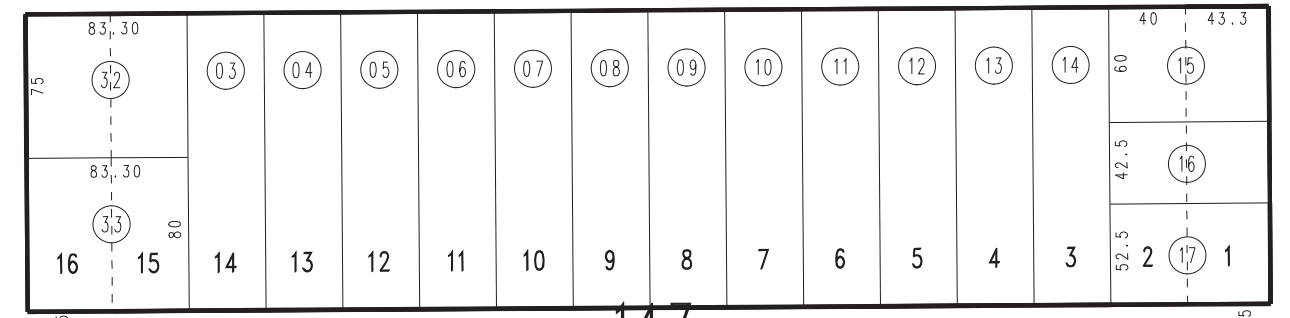
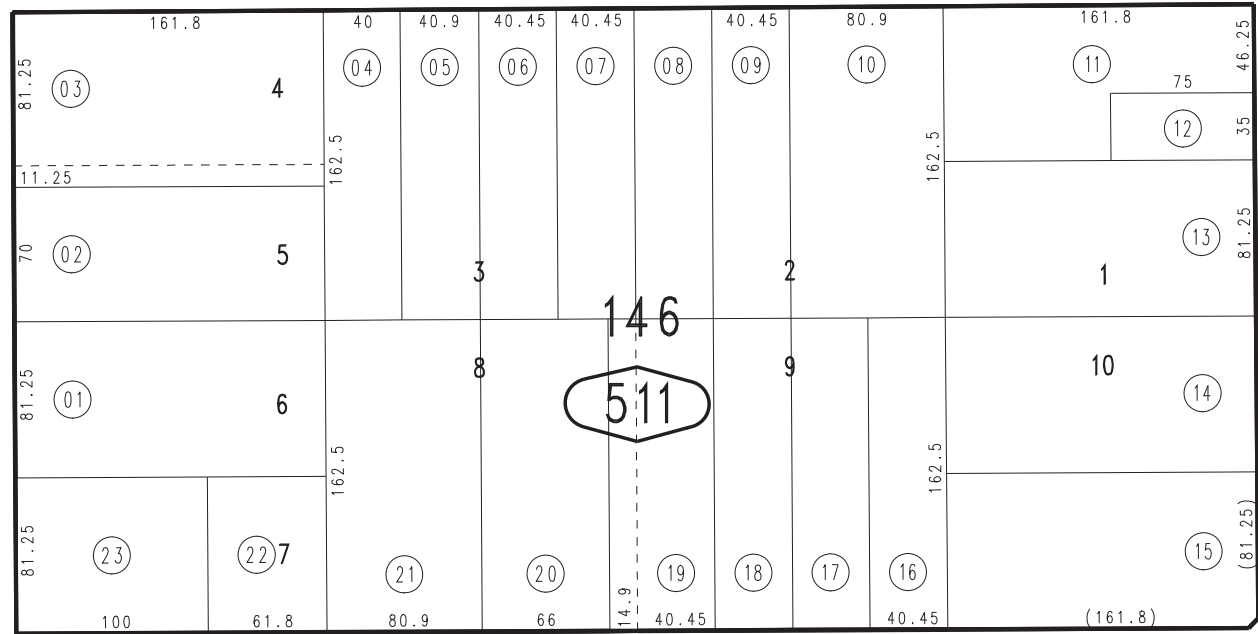


1" = 100'

34

WATTELAND STREET

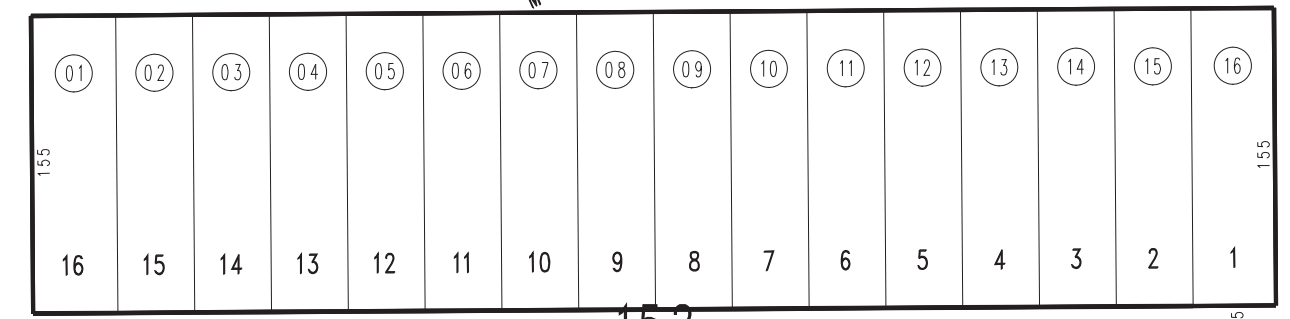
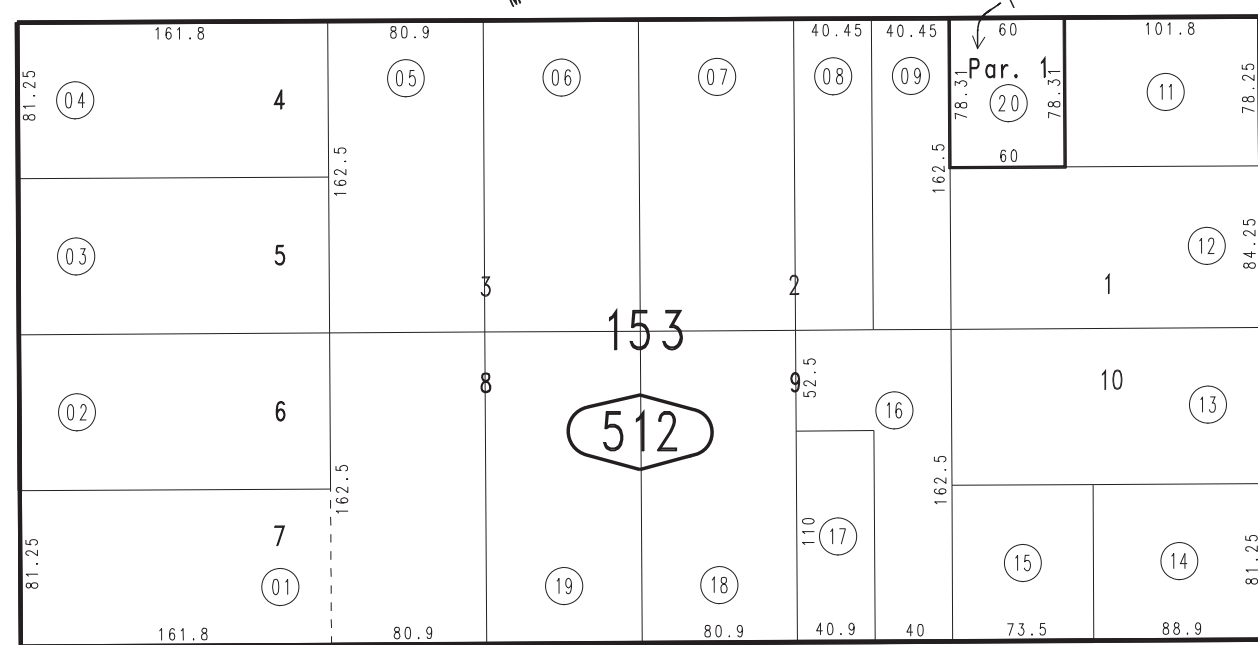
STREET



56

RALSTON STREET

STREET



50

BELMONT STREET

STREET

52

Hasting's & Heyden's Subdivision, M.B. 18/55  
Parcel Map No. 3578, P.M. 32/92

Ptn. S.E.1/4, Sec.30  
T.1S.,R.7W.

Assessor's Map  
Book 1049 Page 51  
San Bernardino County

REVISED  
05/27/10 KA  
04/10/12 KA