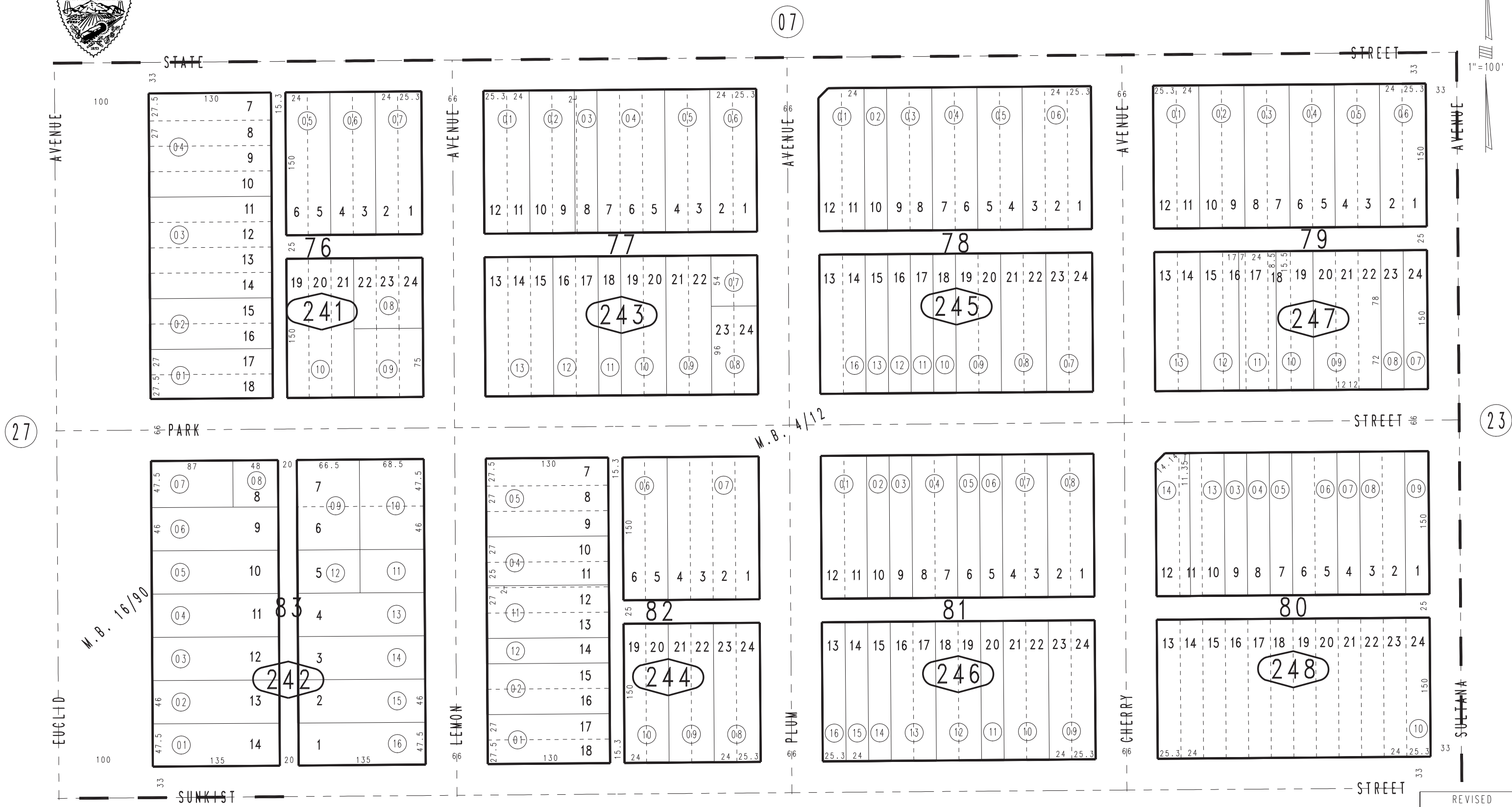


THIS MAP IS FOR THE PURPOSE OF AD VALOREM TAXATION ONLY.

Ptn. South Side Tract M.B. 4/12

City of Ontario
Tax Rate Area
4000

1049 - 24



25

Ptn. N.E.1/4, Sec.30
T.1S.,R.7W.

Assessor's Map
Book 1049 Page 24
San Bernardino County