

THIS MAP IS FOR THE PURPOSE OF AD VALOREM TAXATION ONLY.

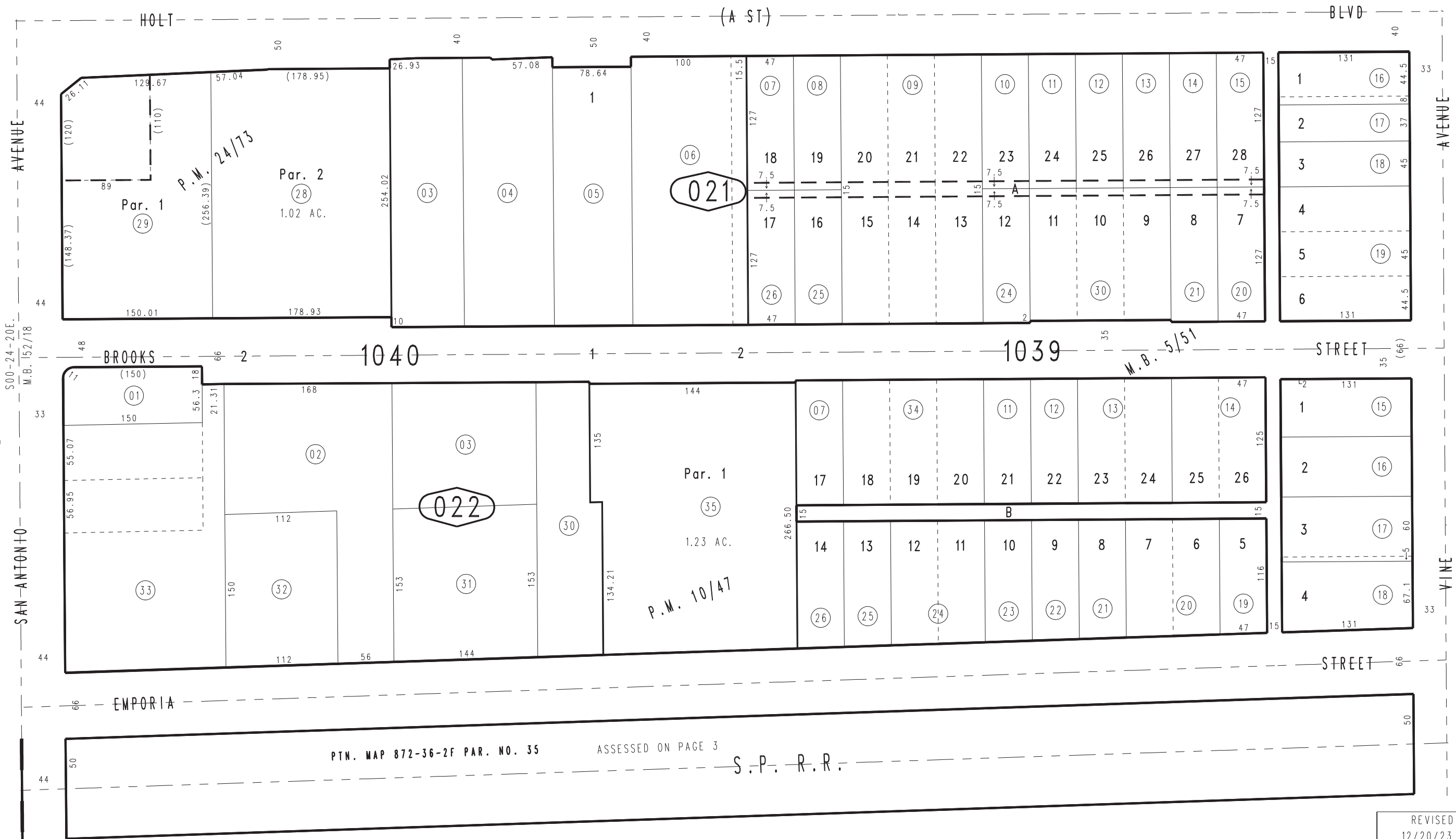
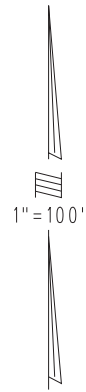
Ptn. Town of Ontario  
M.B. 9/43

City of Ontario  
Tax Rate Area  
4051

1049 - 02



1048  
59



Ptn. Parcel Map No. 2794, P.M. 24/73  
Parcel Map No. 1154, P.M. 10/47  
W.H. BROOKS JR. SUB., M.B. 5/51

03

Ptn. N.W.1/4, Sec.30  
T.1S.,R.7W.

Assessor's Map  
Book 1049 Page 02  
San Bernardino County

REVISED  
12/20/23 XM  
07/08/25 KA