

THIS MAP IS FOR THE PURPOSE OF AD VALOREM TAXATION ONLY.

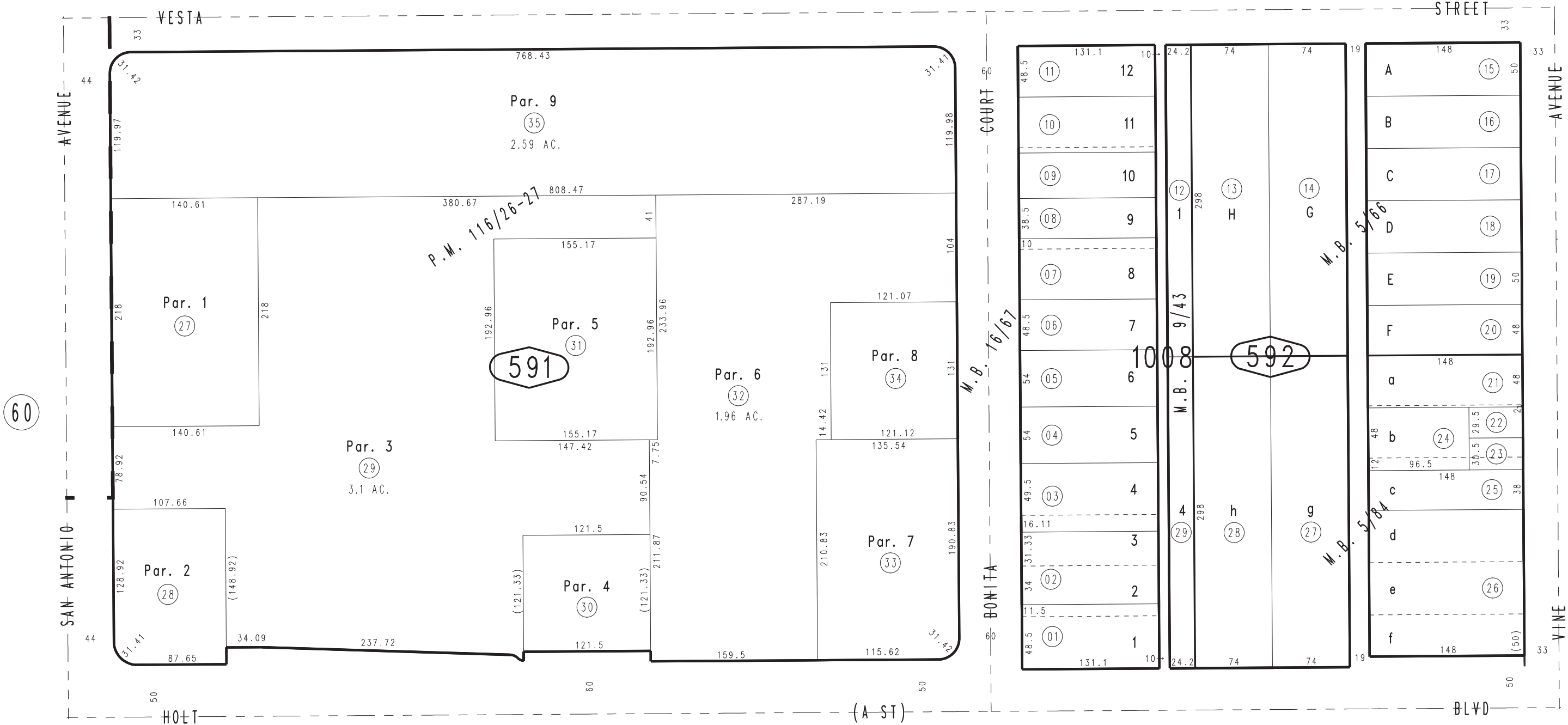
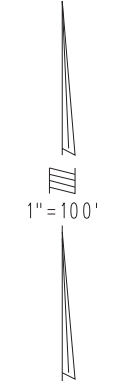
Ptn. Town of Ontario
M.B. 9/43

City of Ontario
Tax Rate Area
4051

1048 - 59



58



57

60

1049
02

Parcel Map No. 9753, P.M. 116/26-27
Garbutt's Sub., M.B. 5/66
Morgan and Dyar Sub., M.B. 5/84
Ptn. Kennedy's Orange Grove Tract M.B. 16/67

October 2004

Ptn. S.W.1/4, Sec.19
T.1S.,R.7W.

Assessor's Map
Book 1048 Page 59
San Bernardino County

REVISED
06/21/21 KA
12/21/23 XM