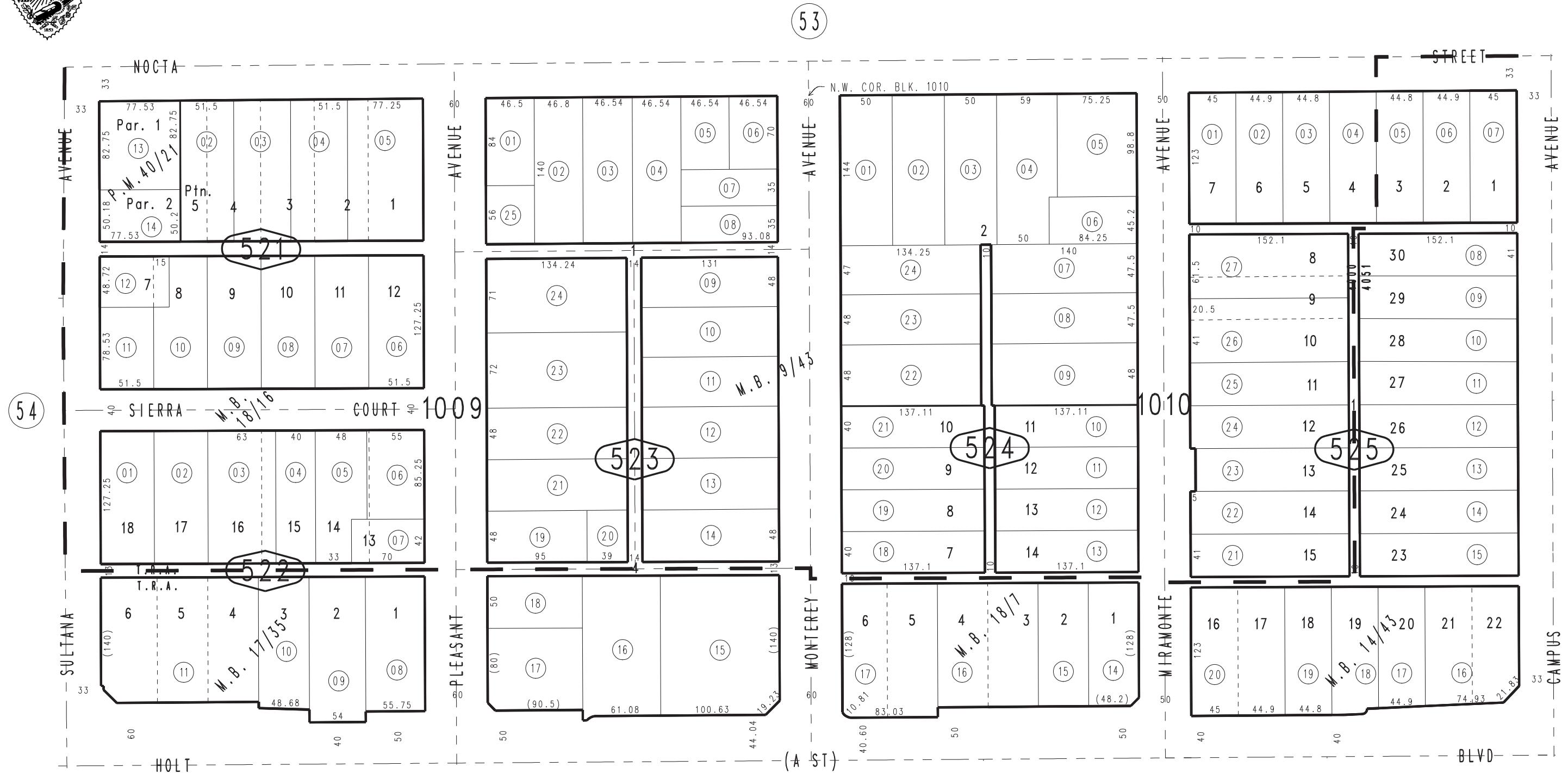


THIS MAP IS FOR THE PURPOSE OF AD VALOREM TAXATION ONLY.

Ptn. Town of Ontario  
M.B. 9/43

City of Ontario  
Tax Rate Area  
4000,4051

1048 - 52



1049  
09

Parcel Map No. 4222, P.M. 40/21  
Sierra Tract, M.B. 18/16  
Elliot's Subdivision, M.B. 17/35  
Lowe's Subdivision, M.B. 18/7  
Ptn. Eastside Tract, M.B. 14/43

October 2004

Ptn. S.W.1/4, Sec.20  
T.1S.,R.7W.

Assessor's Map  
Book 1048 Page 52  
San Bernardino County

REVISED  
09/22/23 XM  
01/31/24 KA  
02/16/24 KA  
09/18/24 CA  
01/31/25 RU  
02/07/25 RU