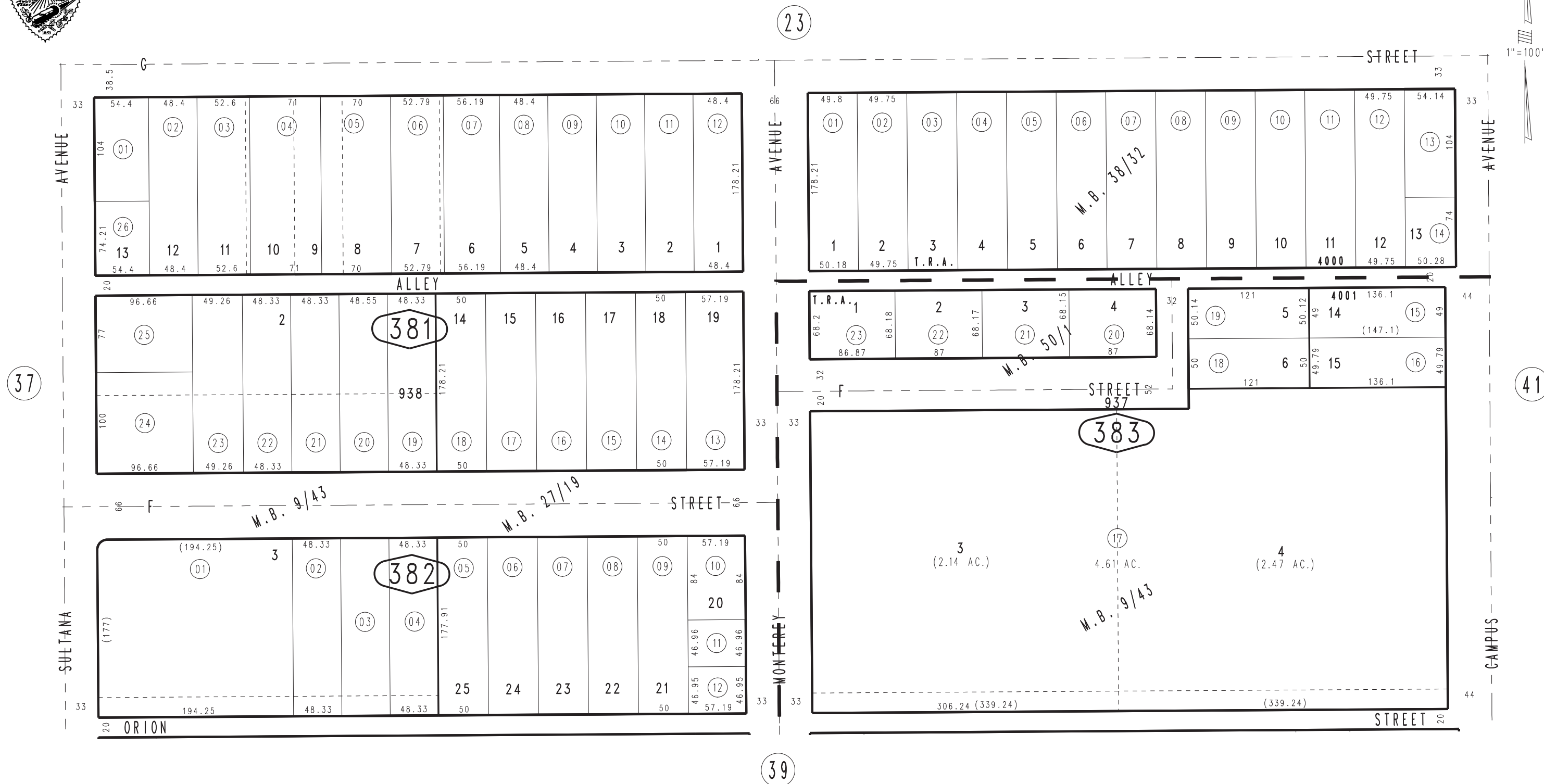
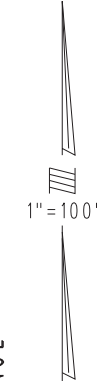


THIS MAP IS FOR THE PURPOSE OF AD VALOREM TAXATION ONLY.

Ptn. Town of Ontario  
M.B. 9/43

City of Ontario  
Tax Rate Area  
4000,4001

1048 - 38



October 2004

Tract No. 1899, M.B. 27/19  
Tract No. 2725, M.B. 38/32  
Tract No. 3722, M.B. 50/1

Ptn. S.W.1/4, Sec.20  
T.1S.,R.7W.

Assessor's Map  
Book 1048 Page 38  
San Bernardino County

REVISED