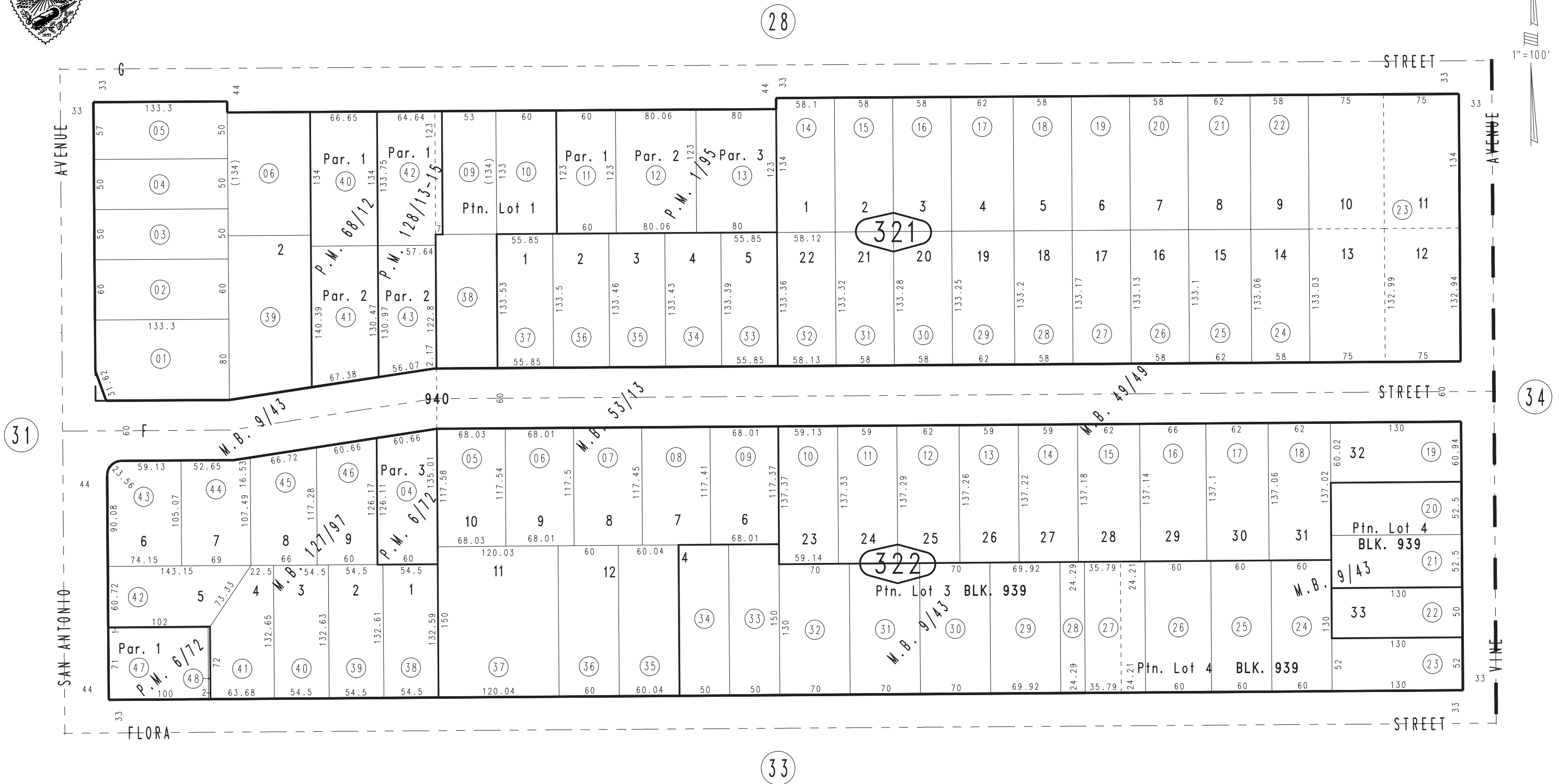


THIS MAP IS FOR THE PURPOSE
OF AD VALOREM TAXATION ONLY.

Ptn. Town of Ontario
M.B. 9/43

City of Ontario
Tax Rate Area
4000

1048 - 32



Parcel Map No. 10590, P.M. 128/13-15
 Parcel Map No. 6753, P.M. 68/12
 Tract No. 9275, M.B. 127/92
 Parcel Map No. 656, P.M. 6/72
 Parcel Map No. 99, P.M. 1/95
 The Westside Estates Tr. No. 3823, M.B. 49/49
 Tract No. 4166, M.B. 53/13

October 2004

Ptn. S.W.1/4, Sec.19
T.1S.,R.7W.

Assessor's Map
Book 1048 Page 32
San Bernardino County

REVISED