

THIS MAP IS FOR THE PURPOSE  
OF AD VALOREM TAXATION ONLY.

Ptn. Town of Ontario  
M.B. 9/43

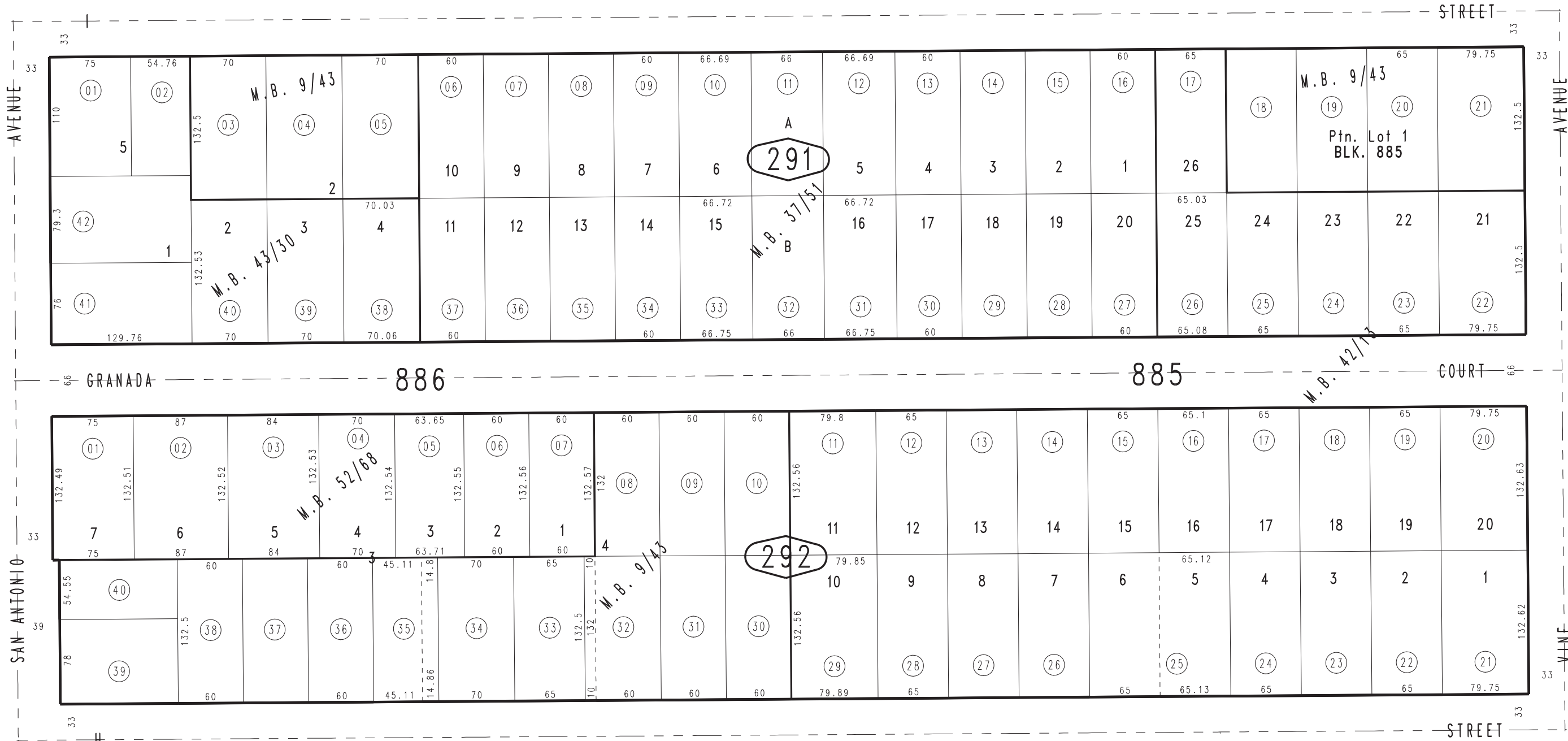
City of Ontario  
Tax Rate Area  
4000

1048 - 29



03

1"=100'



30

26

28

Tract No. 3151, M.B. 43/30  
Tract No. 3147, M.B. 42/13  
Tract No. 2643, M.B. 37/51  
Tract No. 4131, M.B. 52/68

October 2004

Ptn. N.W.1/4, Sec.19  
T.1S.,R.7W.

Assessor's Map  
Book 1048 Page 29  
San Bernardino County

REVISED