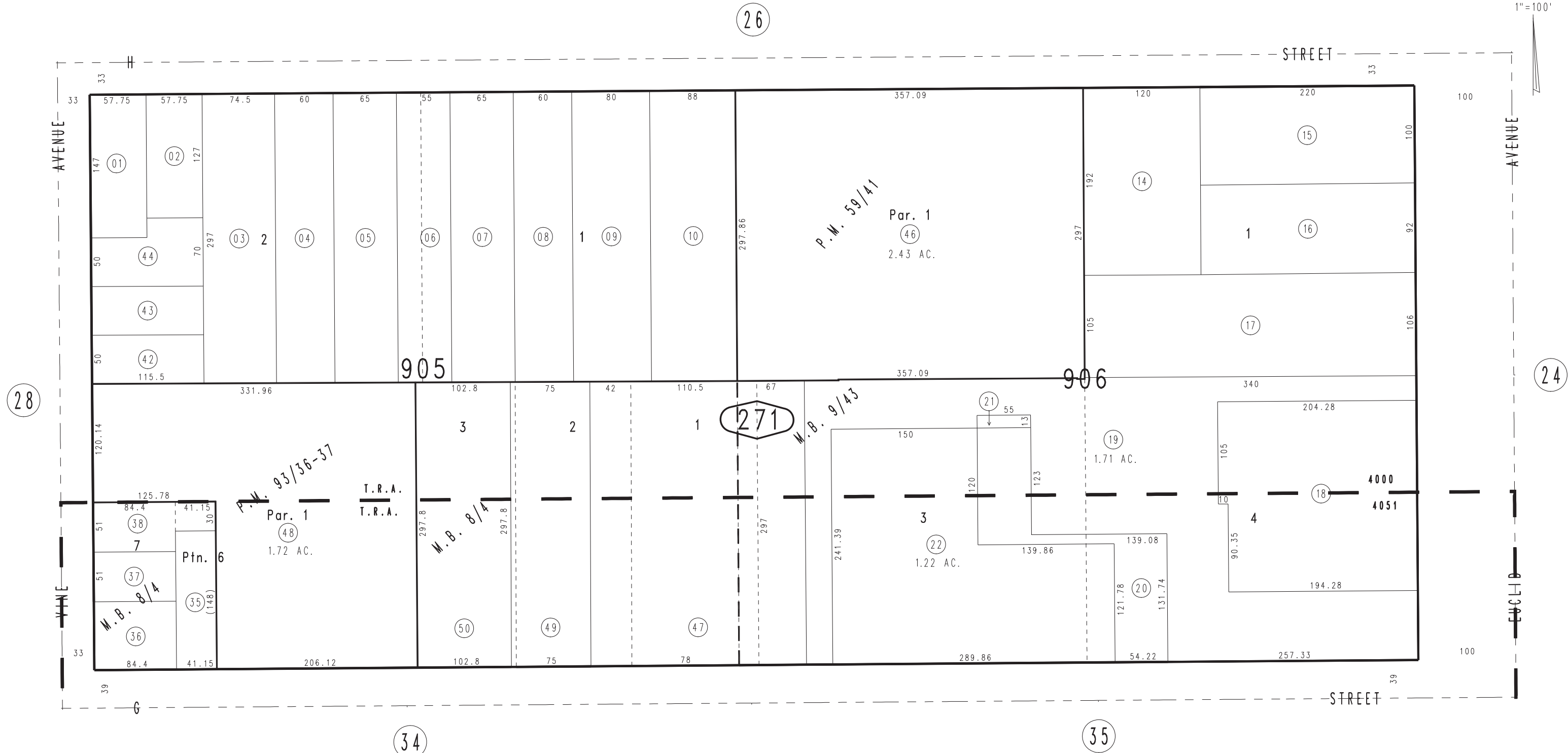


THIS MAP IS FOR THE PURPOSE  
OF AD VALOREM TAXATION ONLY.

Ptn. Town of Ontario  
M.B. 9/43

City of Ontario  
Tax Rate Area  
4000,4051

1048 - 27



October 2004

Parcel Map No. 8693, P.M. 93/36-37  
Parcel Map 5517, P.M. 59/41  
Anderson Subdivision, M.B. 8/4

Ptn. N.1/2, Sec.19  
T.1S.,R.7W.

Assessor's Map  
Book 1048 Page 27  
San Bernardino County

REVISED  
08/03/09 GW