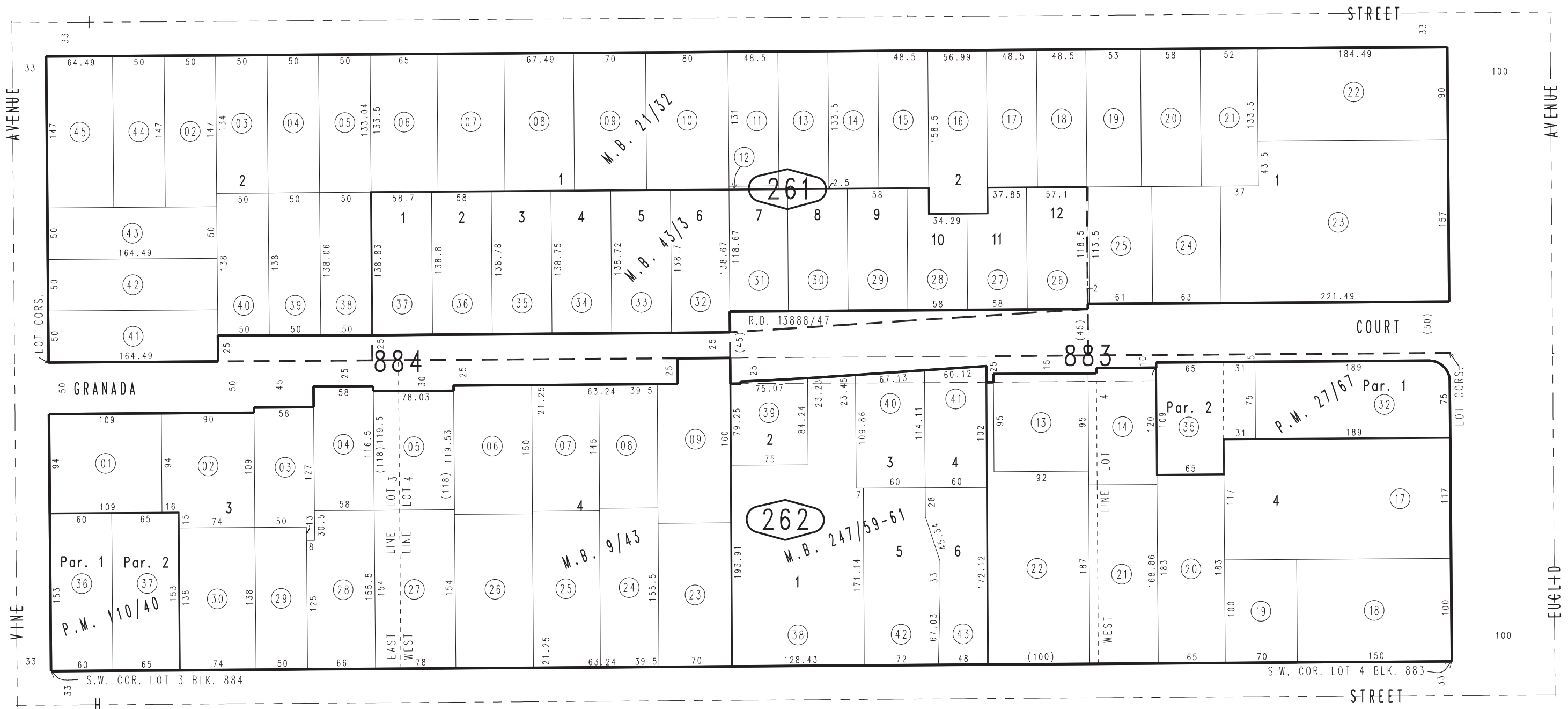
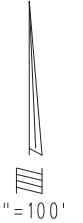


THIS MAP IS FOR THE PURPOSE OF AD VALOREM TAXATION ONLY.

Ptn. Town of Ontario  
M.B. 9/43

City of Ontario  
Tax Rate Area  
4000

1048 - 26



29

25

27

Tract No. 14972, M.B. 247/59-61  
Parcel Map No. 9961, P.M. 110/40  
Tract No. 3229, M.B. 43/3  
Re-Sub. Lots 1,2, Blk. 883 & Lots 1,2, Blk. 884, Town of Ontario, M.B. 21/32  
Parcel Map No. 3048, P.M. 27/67

October 2004

Ptn. N.1/2, Sec.19  
T.1S.,R.7W.

Assessor's Map  
Book 1048 Page 26  
San Bernardino County

REVISED