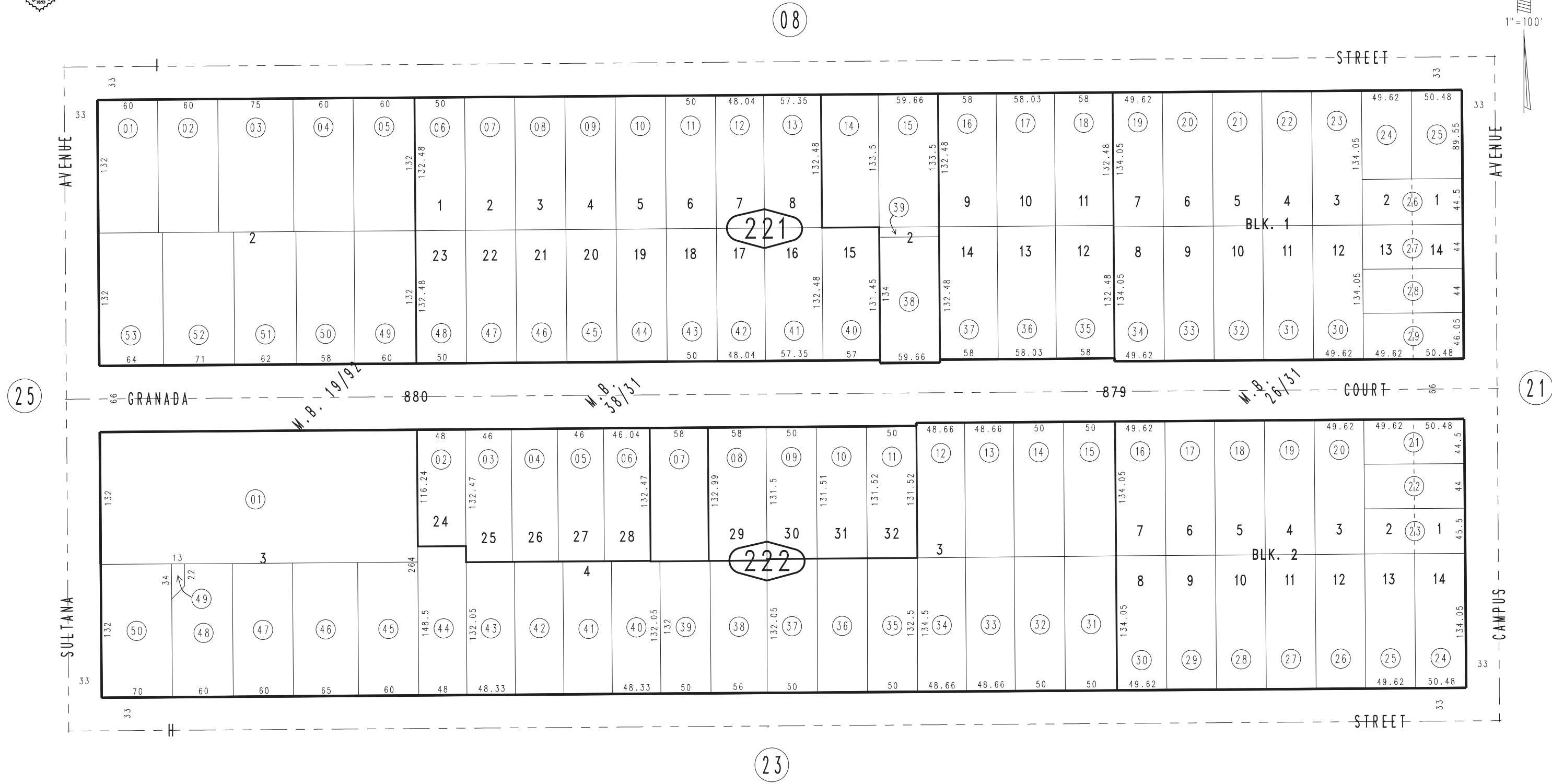


THIS MAP IS FOR THE PURPOSE OF AD VALOREM TAXATION ONLY.

Ptn. Town of Ontario
M.B. 9/43

City of Ontario
Tax Rate Area
4000

1048 - 22



October 2004

Tract No. 1779, M.B. 26/31
Tract No. 2724, M.B. 38/31
Re-sub. Blks. 879 & 880, Town of Ontario, M.B. 19/92

Ptn. N.W.1/4, Sec.20
T.1S.,R.7W.

Assessor's Map
Book 1048 Page 22
San Bernardino County

REVISED