

THIS MAP IS FOR THE PURPOSE OF AD VALOREM TAXATION ONLY.

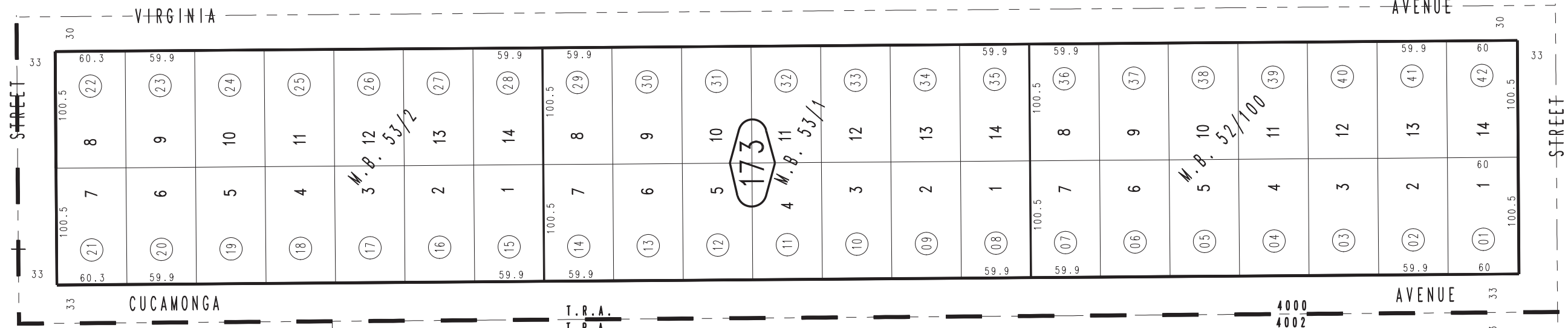
Ptn. Tract No. 2931, M.B. 40/58-64

City of Ontario  
Tax Rate Area  
4000,4002

1048 - 17

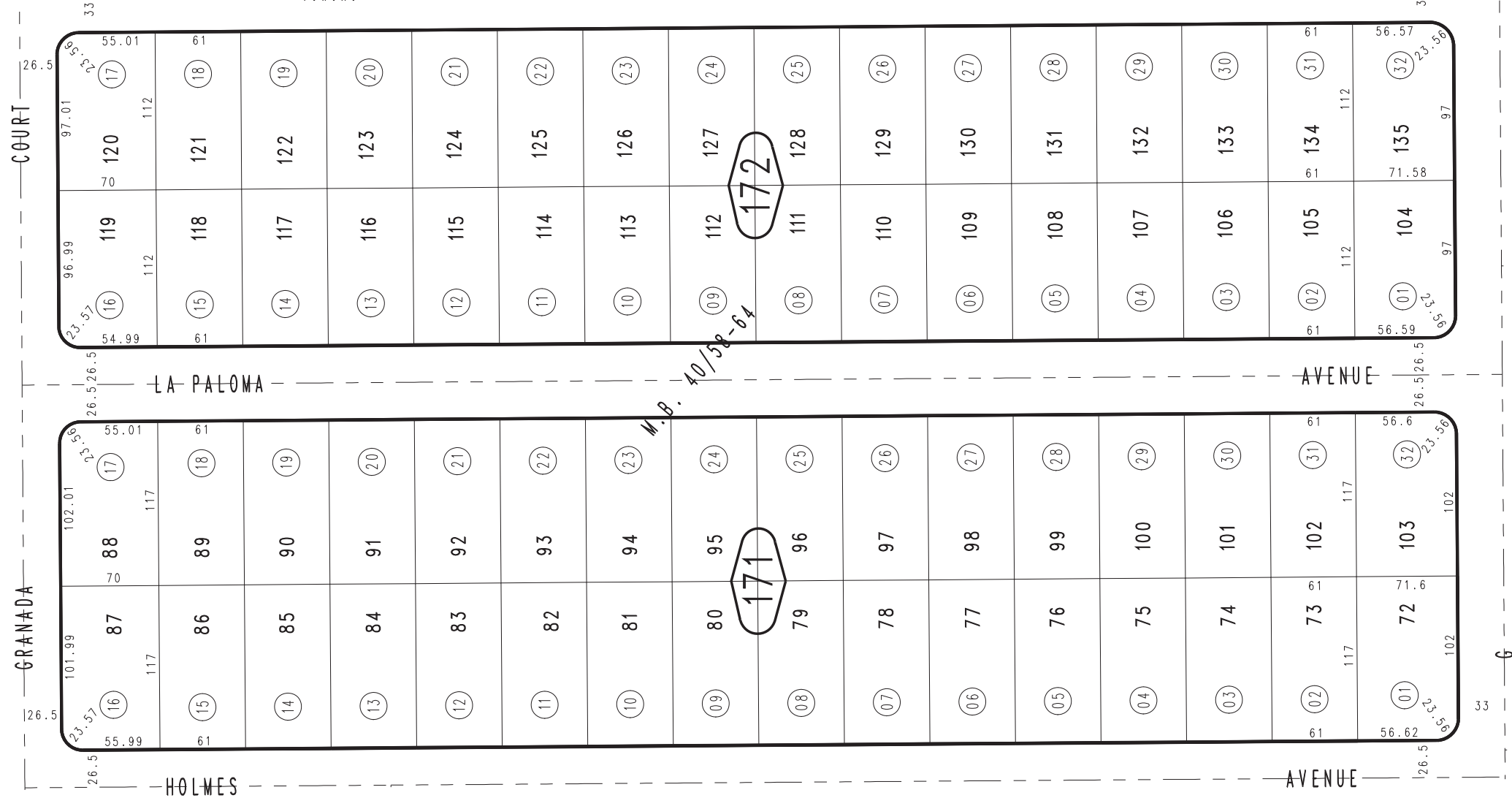


14



44

12



43

18

19

Ptn. Tr. No. 4143, M.B. 53/2  
Ptn. Tr. No. 4142, M.B. 53/1  
Ptn. Tr. No. 4141, M.B. 52/100

Ptn. N.E.1/4, Sec.20  
T.1S.,R.7W.

Assessor's Map  
Book 1048 Page 17  
San Bernardino County