

THIS MAP IS FOR THE PURPOSE OF AD VALOREM TAXATION ONLY.

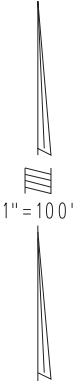
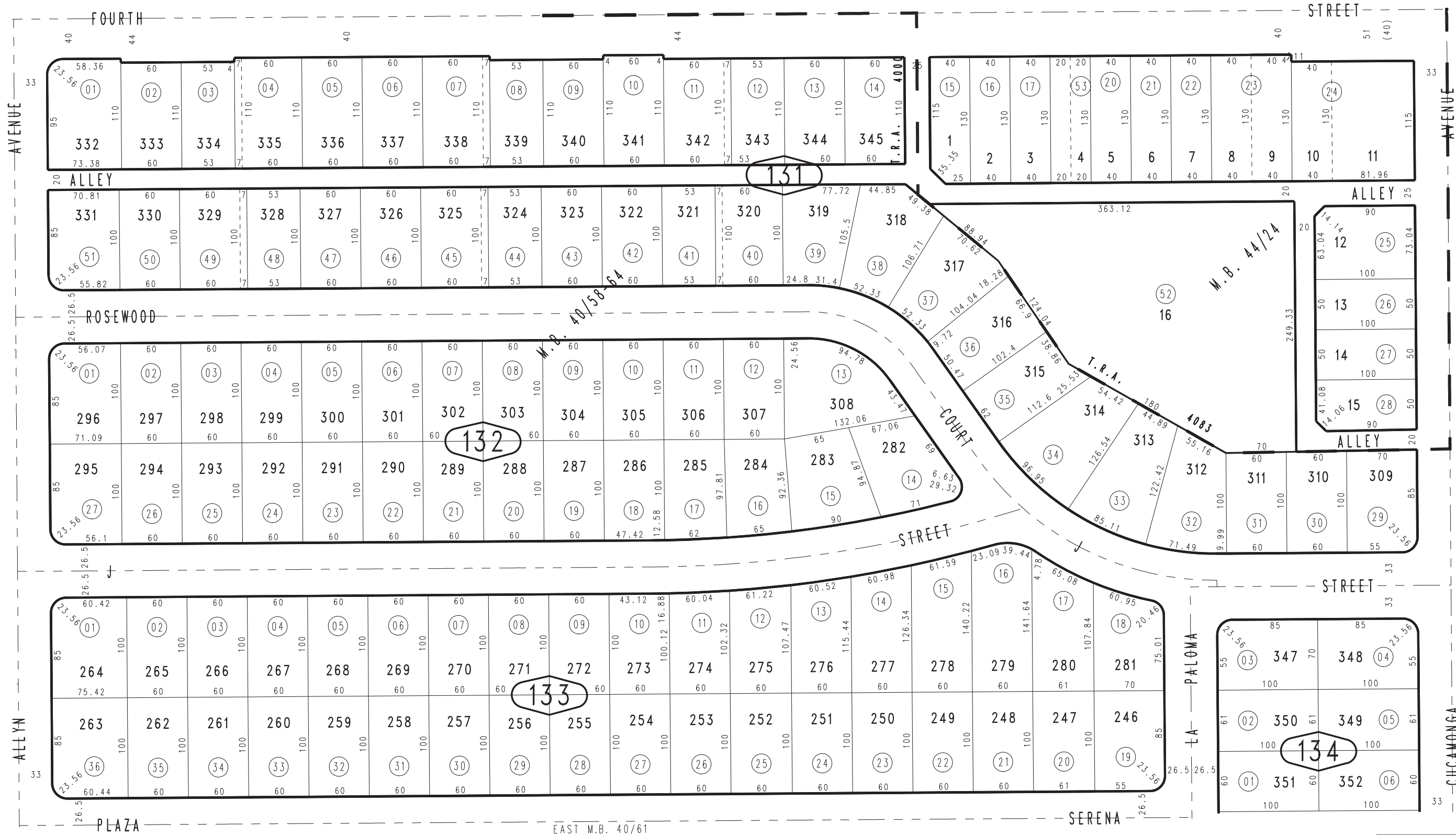
Ptn. Tract No. 2931, M.B. 40/58-64

City of Ontario  
Tax Rate Area  
4000 4083

1048 - 13



1047  
47



12

Ptn. N.E.1/4, Sec.20  
T.1S.,R.7W.

Assessor's Map  
Book 1048 Page 13  
San Bernardino County

REVISED  
02/26/08 RM  
08/03/09 GW