

THIS MAP IS FOR THE PURPOSE OF AD VALOREM TAXATION ONLY.

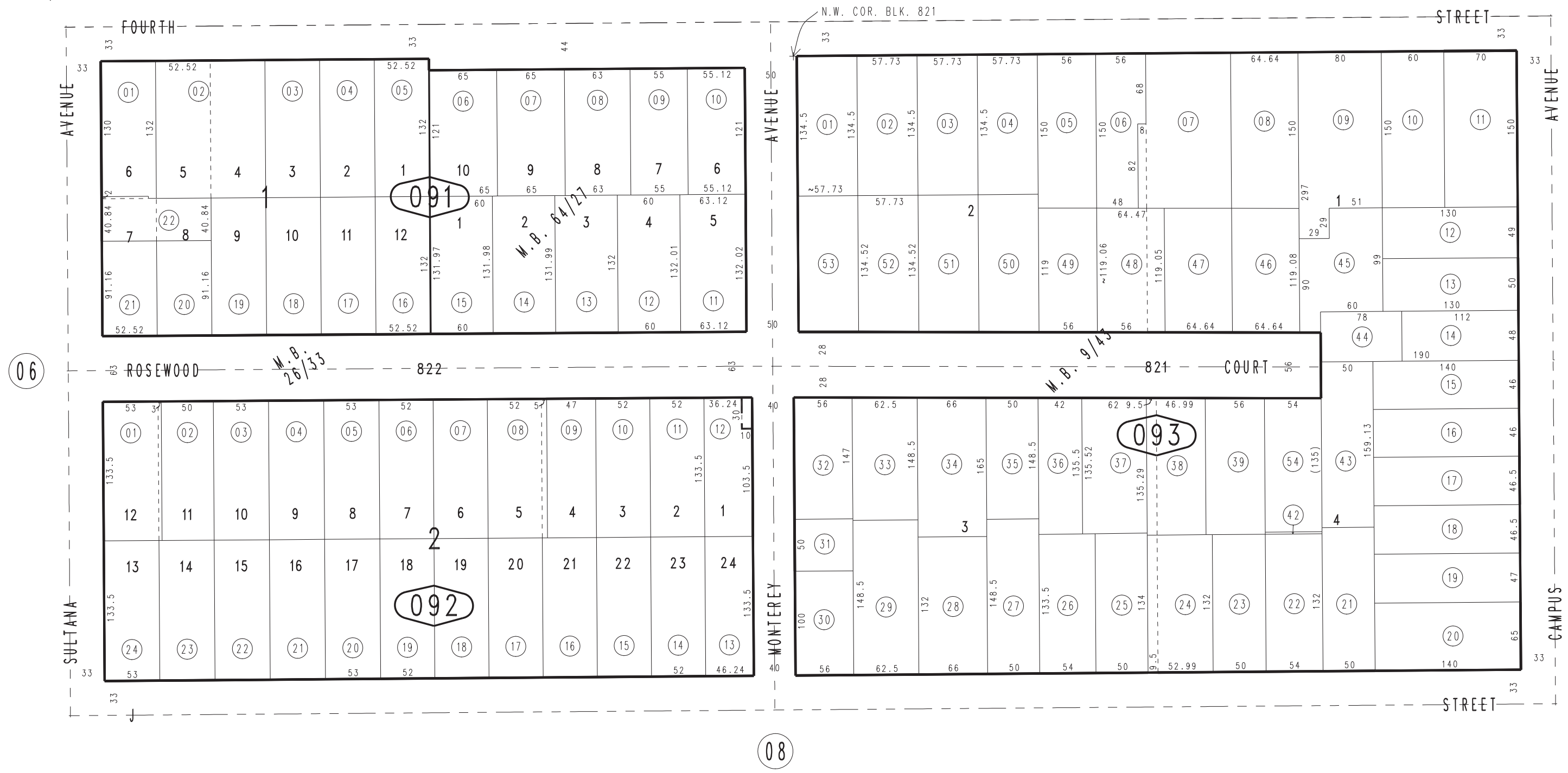
Ptn. Town of Ontario  
M.B. 9/43

City of Ontario  
Tax Rate Area  
4000

1048 - 09



1047  
51



October 2004

Tract No. 1762, M.B. 26/33  
Tract No. 5139, M.B. 64/27

Ptn. N.W.1/4, Sec.20  
T.1S.,R.7W.

Assessor's Map  
Book 1048 Page 09  
San Bernardino County

REVISED