

THIS MAP IS FOR THE PURPOSE OF AD VALOREM TAXATION ONLY.

Ptn. Town of Ontario M.B. 9/43

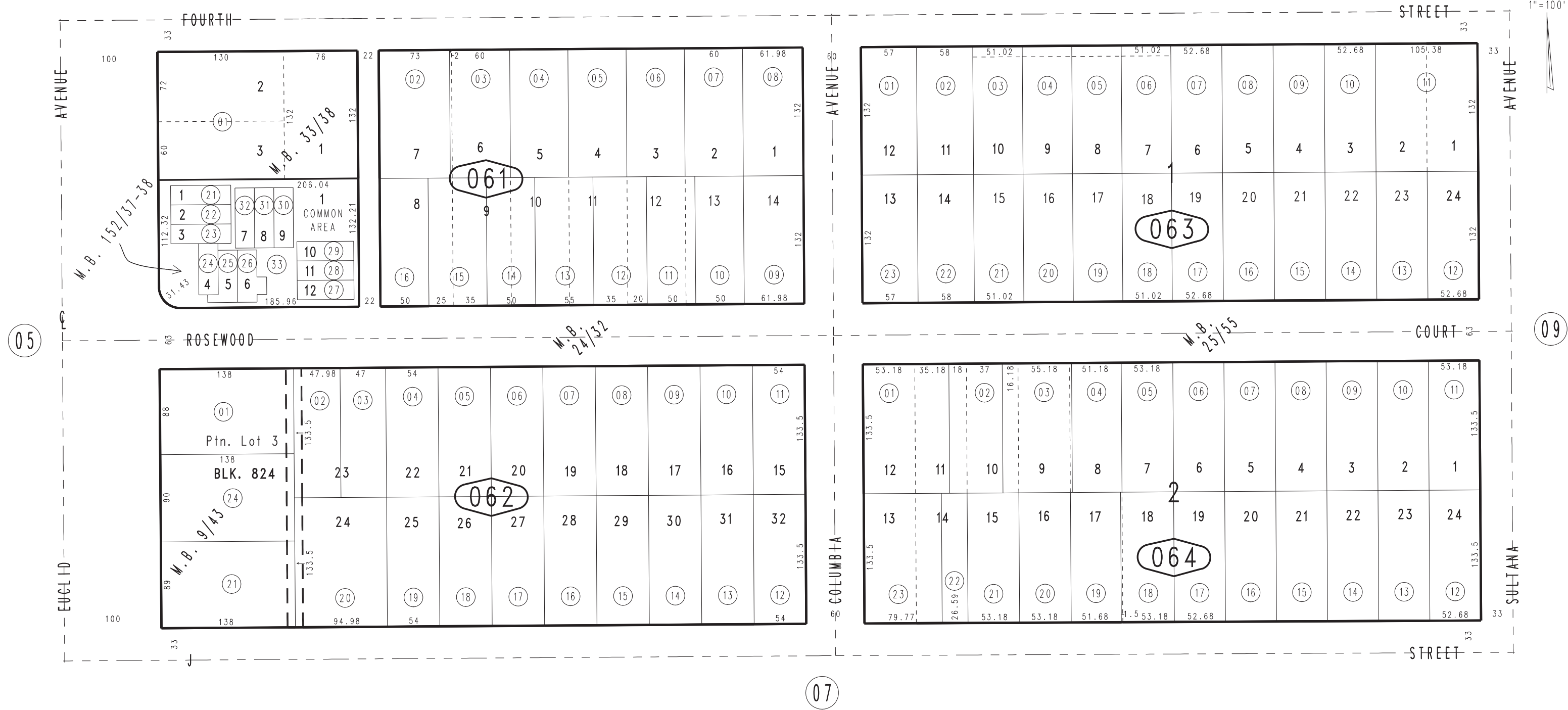
City of Ontario
Tax Rate Area
4000

1048 - 06



1047
54

1" = 100'



Tract No. 11046, M.B. 152/37-38, Condominium Plan, O.R. 81-022343
Ptn. Tract No. 2319, M.B. 33/38
Rosewood Tract No. 1716, M.B. 25/55
Bell & Gimby's Subdivision, M.B. 24/32

Ptn. N.E.1/4, Sec.19
T.1S.,R.7W.

Assessor's Map
Book 1048 Page 06
San Bernardino County

REVISED
07/10/14 BK-MC
07/26/16 GW