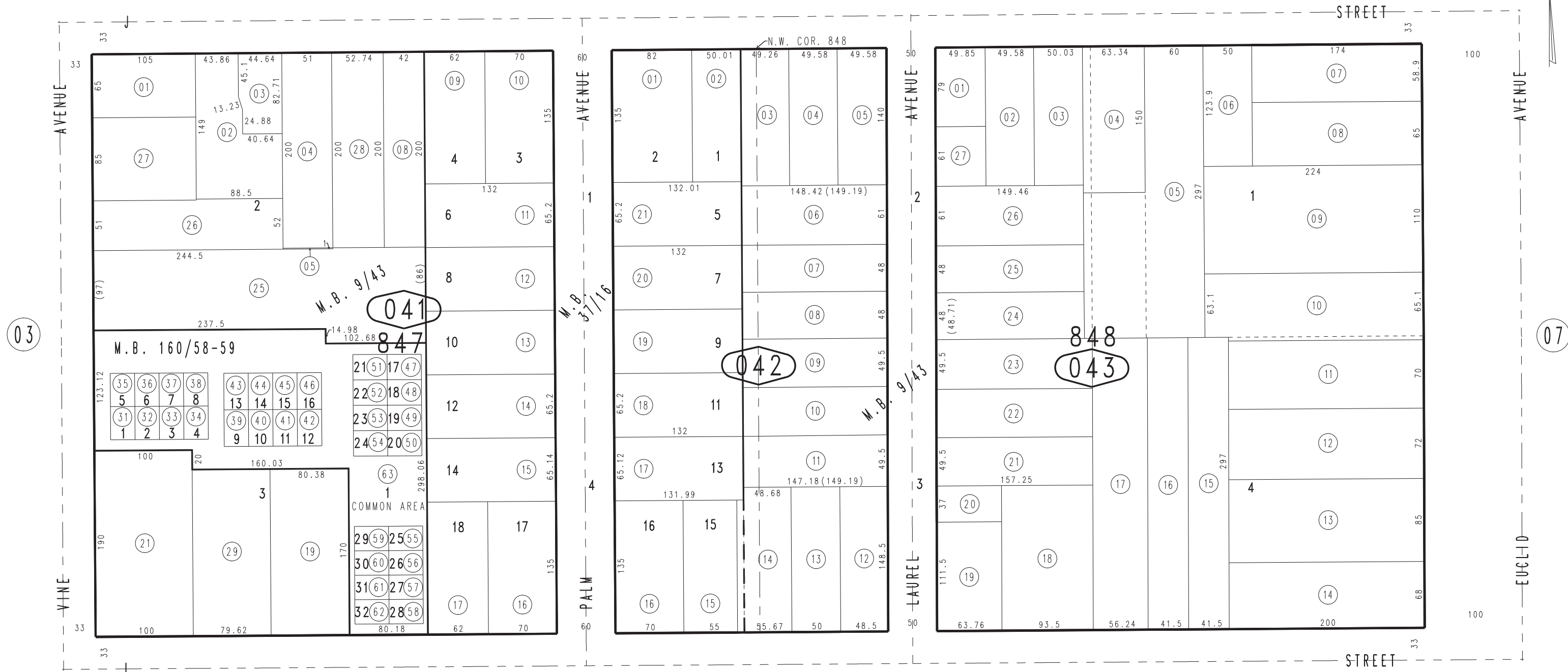


THIS MAP IS FOR THE PURPOSE OF AD VALOREM TAXATION ONLY.

Ptn. Town of Ontario
M.B. 9/43

City of Ontario
Tax Rate Area
4000

1048 - 04



October 2004

Tract No. 2599, M.B. 37/16
Tract No. 11772, M.B. 160/58-59, Condominium Plan-O.R. 82-008997

Ptn. N.1/2, Sec.19
T.1S.,R.7W.

Assessor's Map
Book 1048 Page 04
San Bernardino County

REVISED