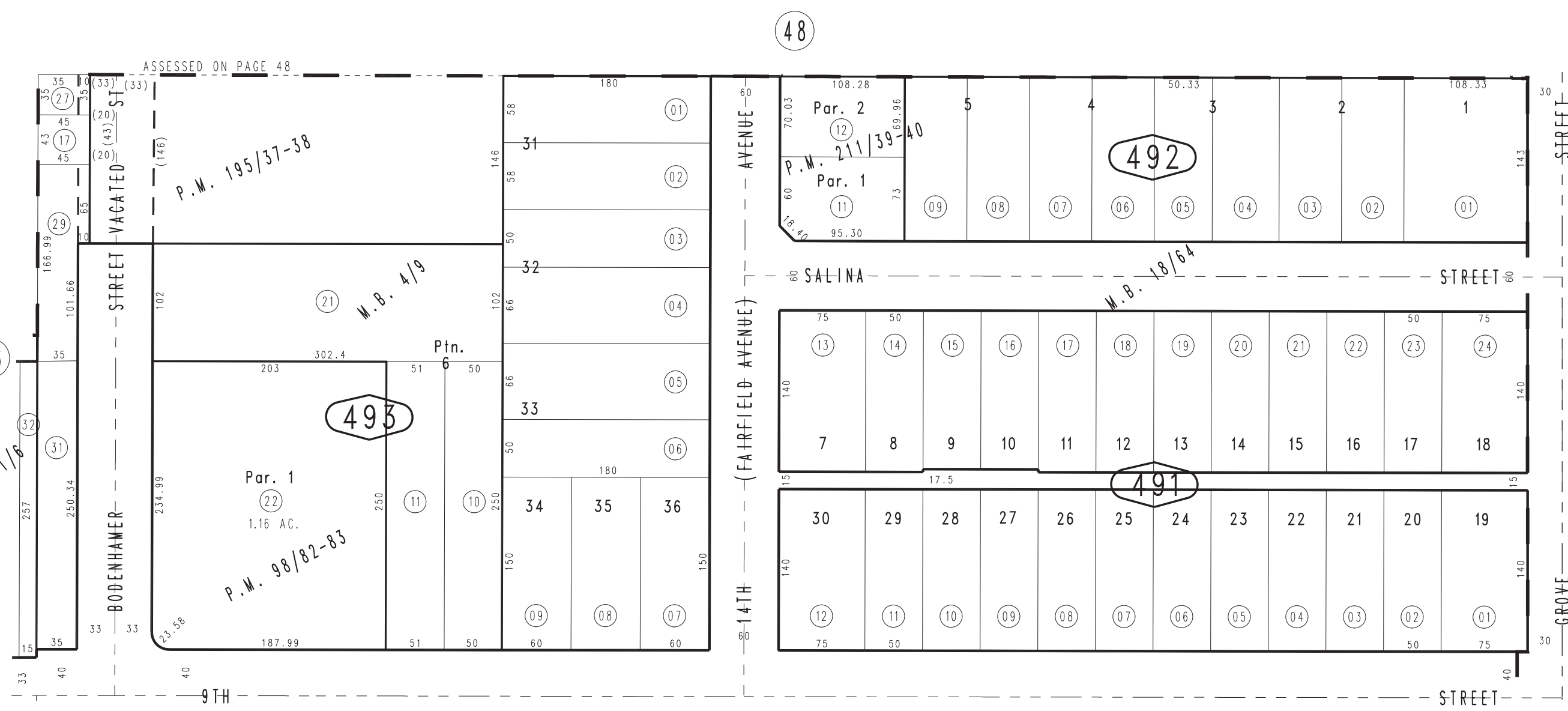


THIS MAP IS FOR THE PURPOSE OF AD VALOREM TAXATION ONLY.

Ptn. Cucamonga Lands M.B. 4/9

City of Upland
Tax Rate Area
8052

1046 - 49



Parcel Map No. 16985, P.M. 211/39-40
 Ptn. Parcel Map No. 15774, P.M. 195/37-38
 Parcel Map No. 9141, P.M. 98/82-83
 Pleasant Plain Tract, M.B. 18/64
 Ptn. Ontario Colony Lands, M.B. 11/6

August 2004

Ptn. S.E.1/4, Sec.8
T.1S.,R.7W.

Assessor's Map
Book 1046 Page 49
San Bernardino County

REVISED
01/21/10 RU
01/22/10 RU