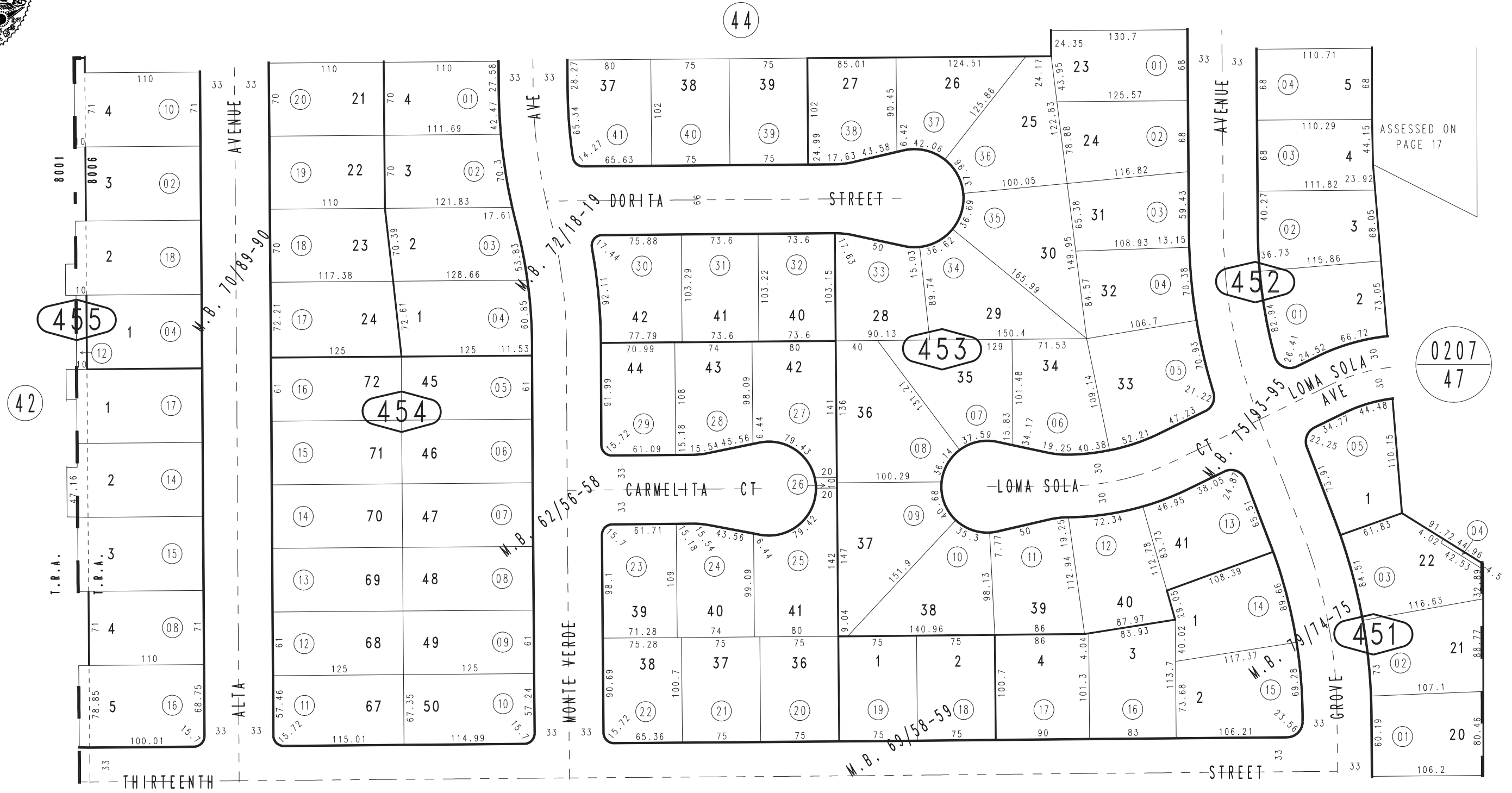


THIS MAP IS FOR THE PURPOSE OF AD VALOREM TAXATION ONLY.

Ptn. Tract No. 4932, M.B. 62/56-58

City of Upland
Tax Rate Area
8001,8006

1045 - 45



ASSESSED ON PAGE 17

Ptn. Tract No. 6091, M.B. 79/74-75
 Ptn. Tract No. 6075, M.B. 75/93-95
 Ptn. Tract No. 5796, M.B. 72/18-19
 Ptn. Tract No. 4705, M.B. 70/89-90
 Ptn. Tract No. 5596, M.B. 69/58-59

August 2004

Ptn. S.E.1/4, Sec.5
T.1S.,R.7W.

Assessor's Map
Book 1045 Page 45
San Bernardino County

REVISED
03/26/09 KC