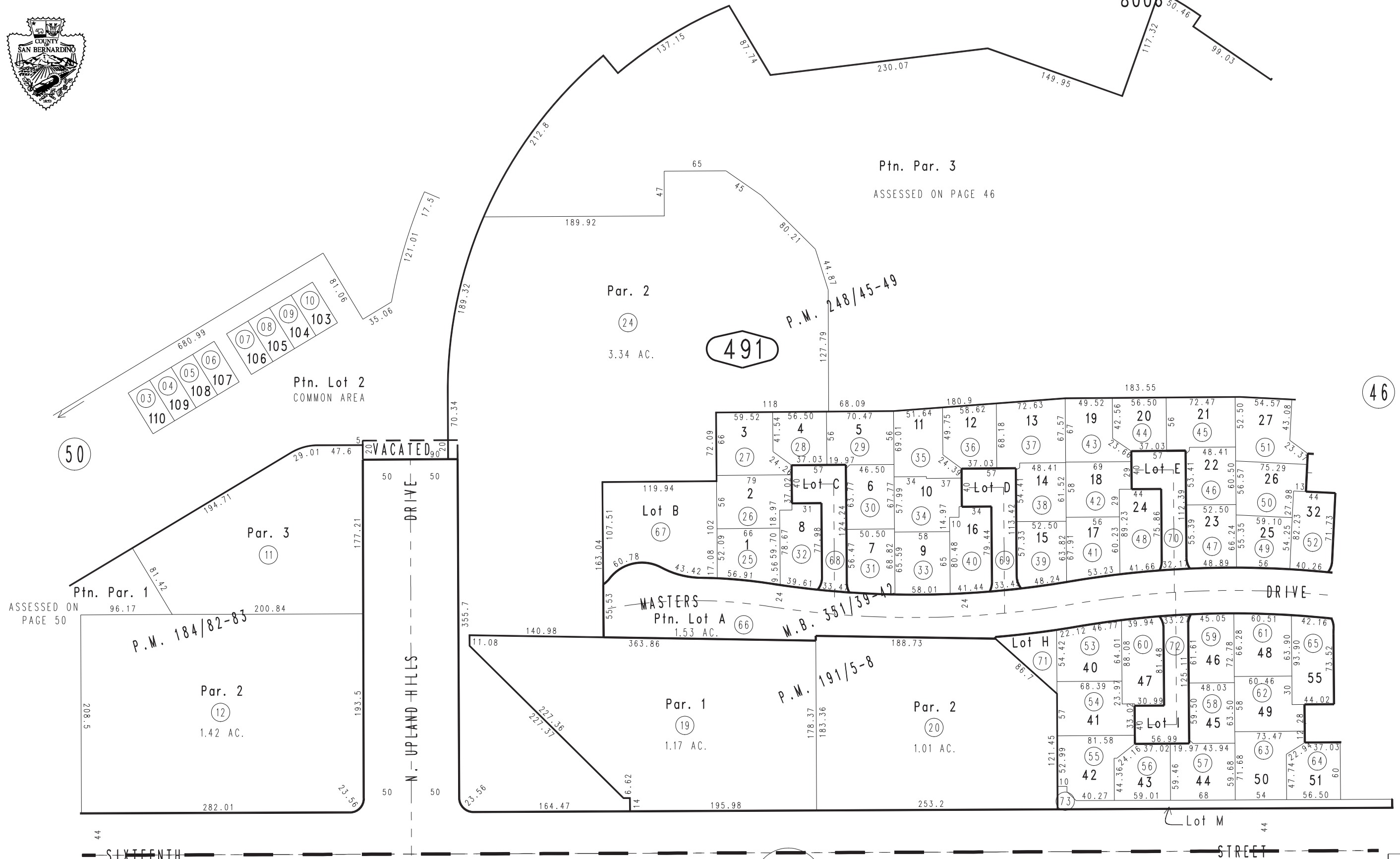


THIS MAP IS FOR THE PURPOSE OF AD VALOREM TAXATION ONLY.

Ptn. Tract No. 11631, M.B. 158/53-62 (48)

City of Upland Tax Rate Area 8006

1044 - 49



(46)

(50)

ASSESSED ON PAGE 50

SIXTEENTH STREET

Ptn. Parcel Map No. 19747, P.M. 248/45-49
Ptn. Parcel Map No. 15459, P.M. 191/5-8
Ptn. Parcel Map No. 15063, P.M. 184/82-83
Ptn. Condominium Plan-Lot 2, O.R. 82-197769

Ptn. Tract No. 20034, M.B. 351/39-42

1045
13

Ptn. S.E.1/4, Sec.32
T.1N.,R.7W., S.B.B.&M.

Assessor's Map
Book 1044 Page 49
San Bernardino County

REVISED
10/05/17 KA
02/11/19 GW

September 2004