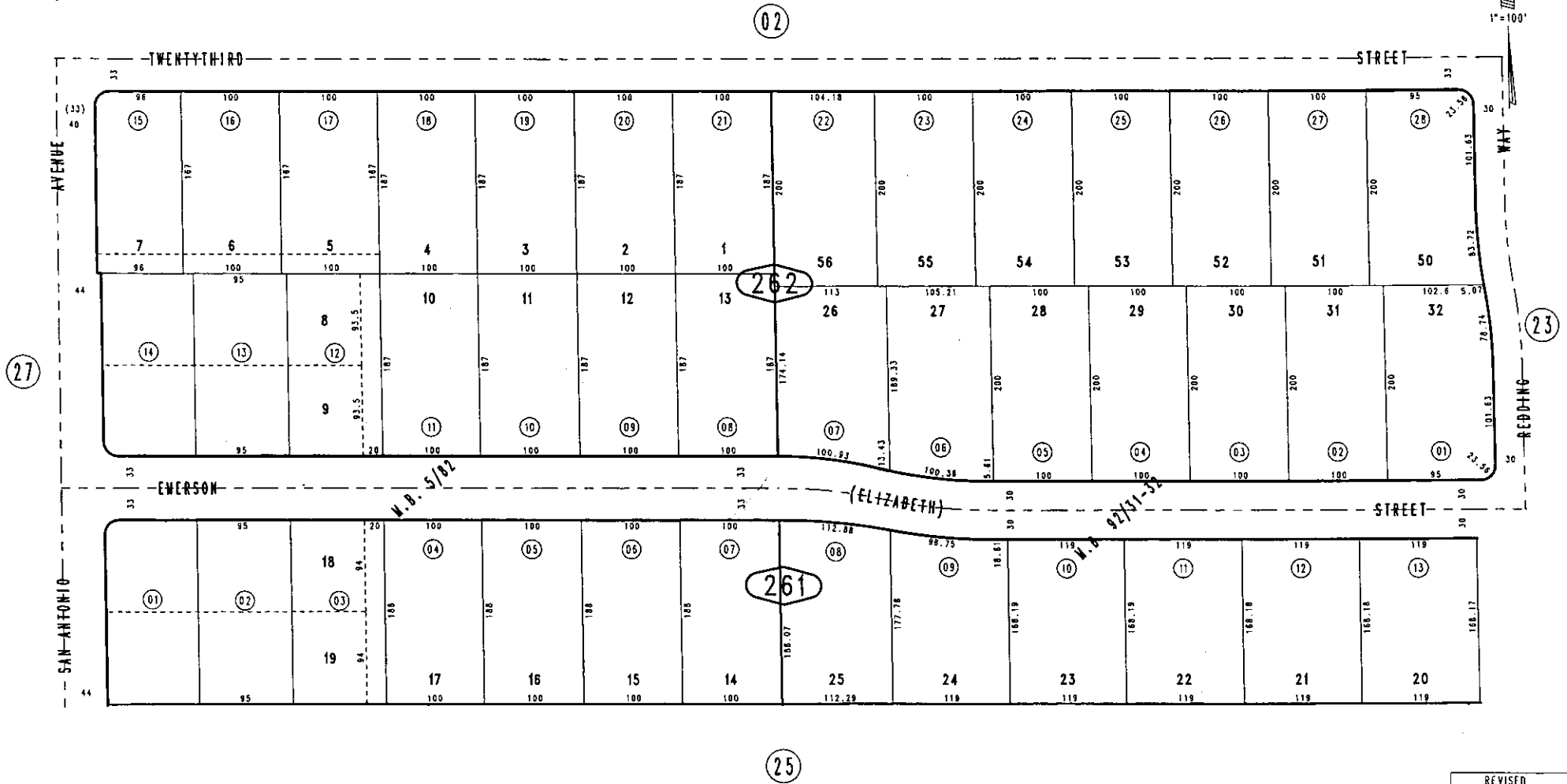


THIS MAP IS FOR THE PURPOSE  
OF AD VALOREM TAXATION ONLY.

# C.P. Lyndall's Subdivision, M.B. 5/82

City of Upland  
Tax Rate Area  
8006

1043 - 26



August 2004

Ptn. Tract No. 7289, M.B. 92/31-32

Ptn. N.W.1/4, Sec.30  
T.1N.,R.7W.

Assessor's Map  
Book 1043 Page 26  
San Bernardino County

REVISED