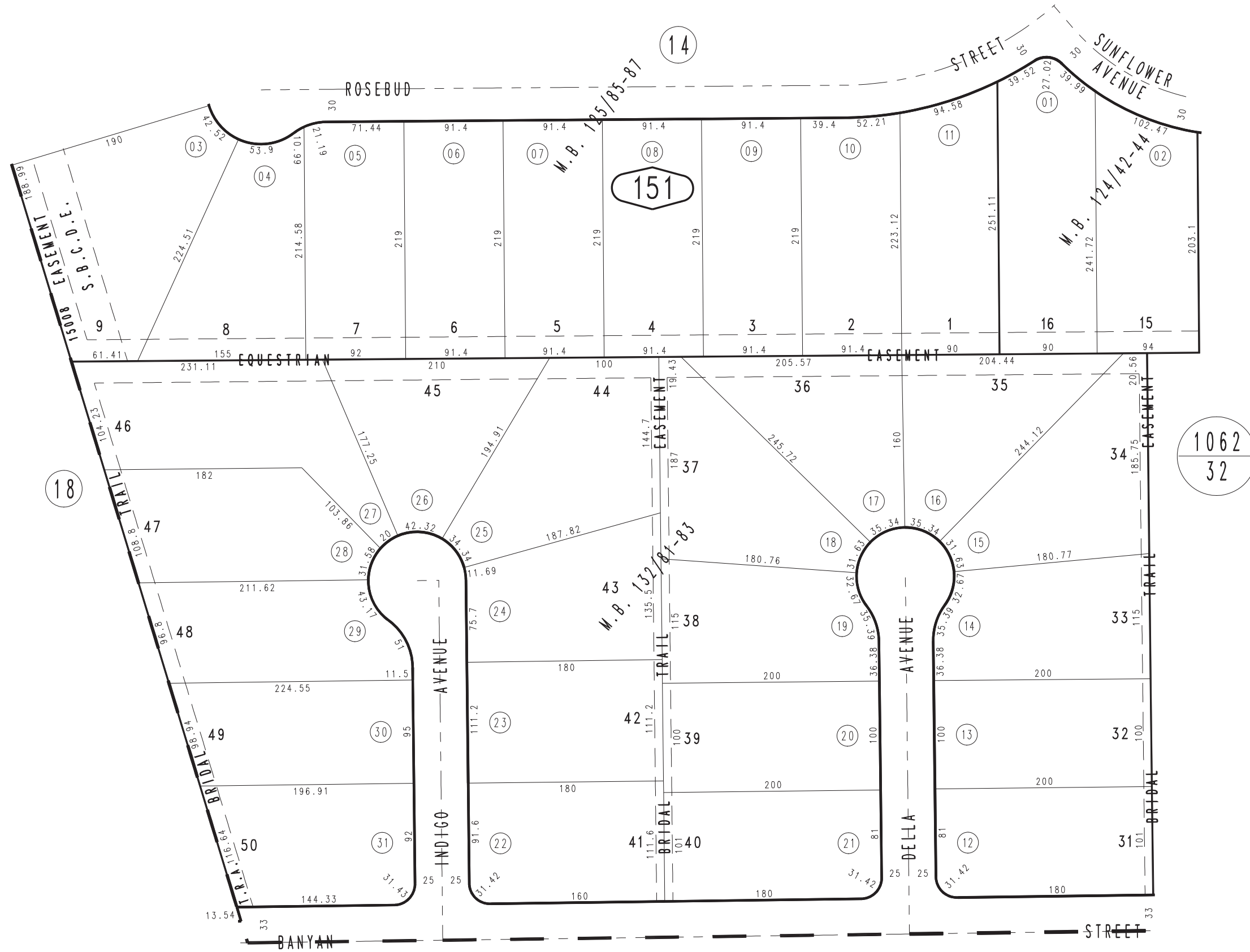


THIS MAP IS FOR THE PURPOSE
OF AD VALOREM TAXATION ONLY.

Ptn. Tract No. 9002, M.B. 124/42-44

City of Rancho Cucamonga 1043 - 15
Tax Rate Area
15008



Ptn. Tract No. 9223, M.B. 132/81-83
Ptn. Tract No. 9003, M.B. 125/85-87

August 2004

41 Pt. N.E.1/4, Sec.29
T.1N.,R.7W.

Assessor's Map
Book 1043 Page 15
San Bernardino County

REVISED