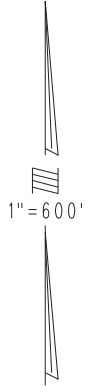
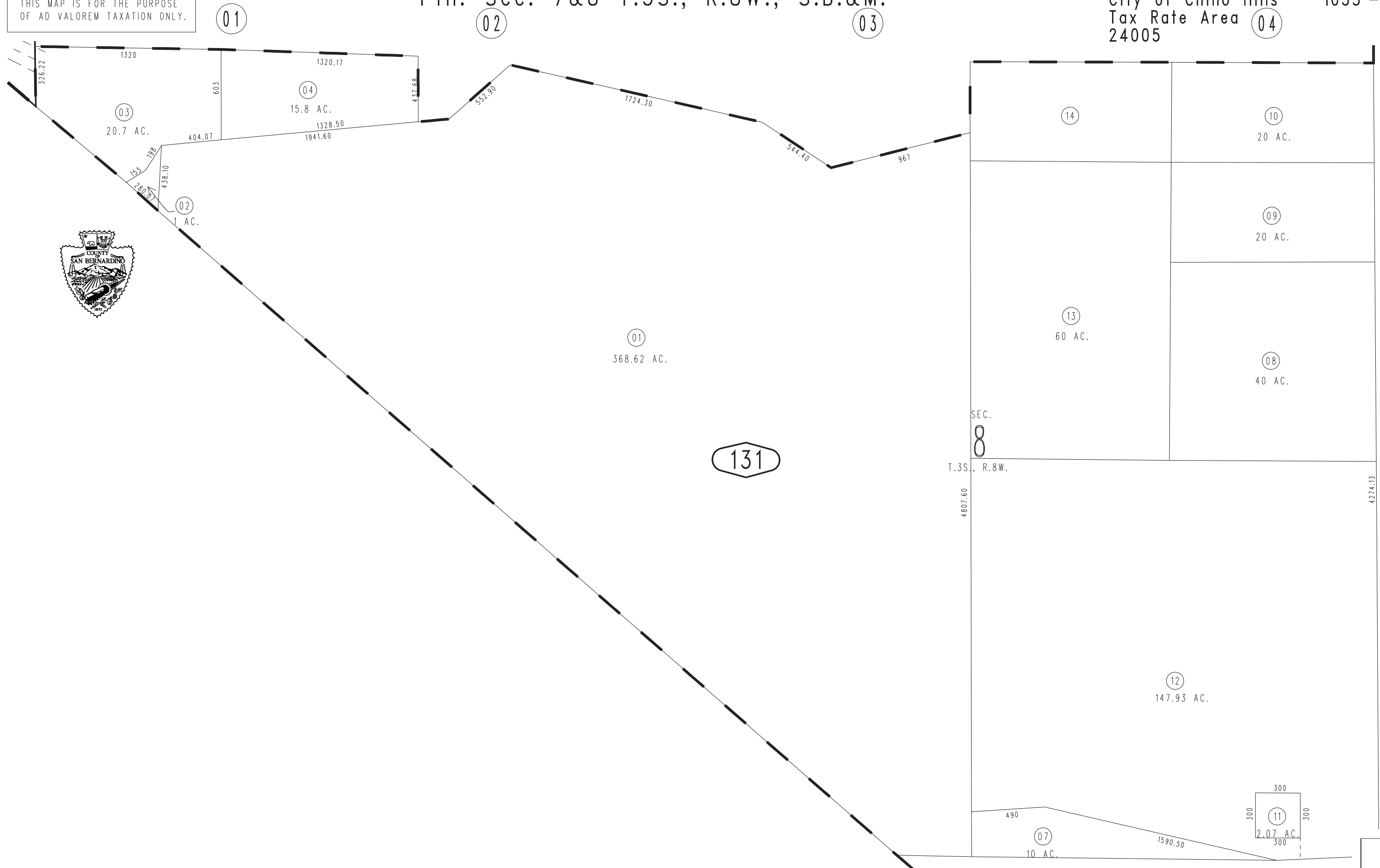


THIS MAP IS FOR THE PURPOSE
OF AD VALOREM TAXATION ONLY.

Ptn. Sec. 7&8 T.3S., R.8W., S.B.&M.

City of Chino Hills
Tax Rate Area 24005

1033 - 13



OCT. 1951

14

Assessor's Map
Book 1033 Page 13
San Bernardino County

REVISED
10/24/06 BK