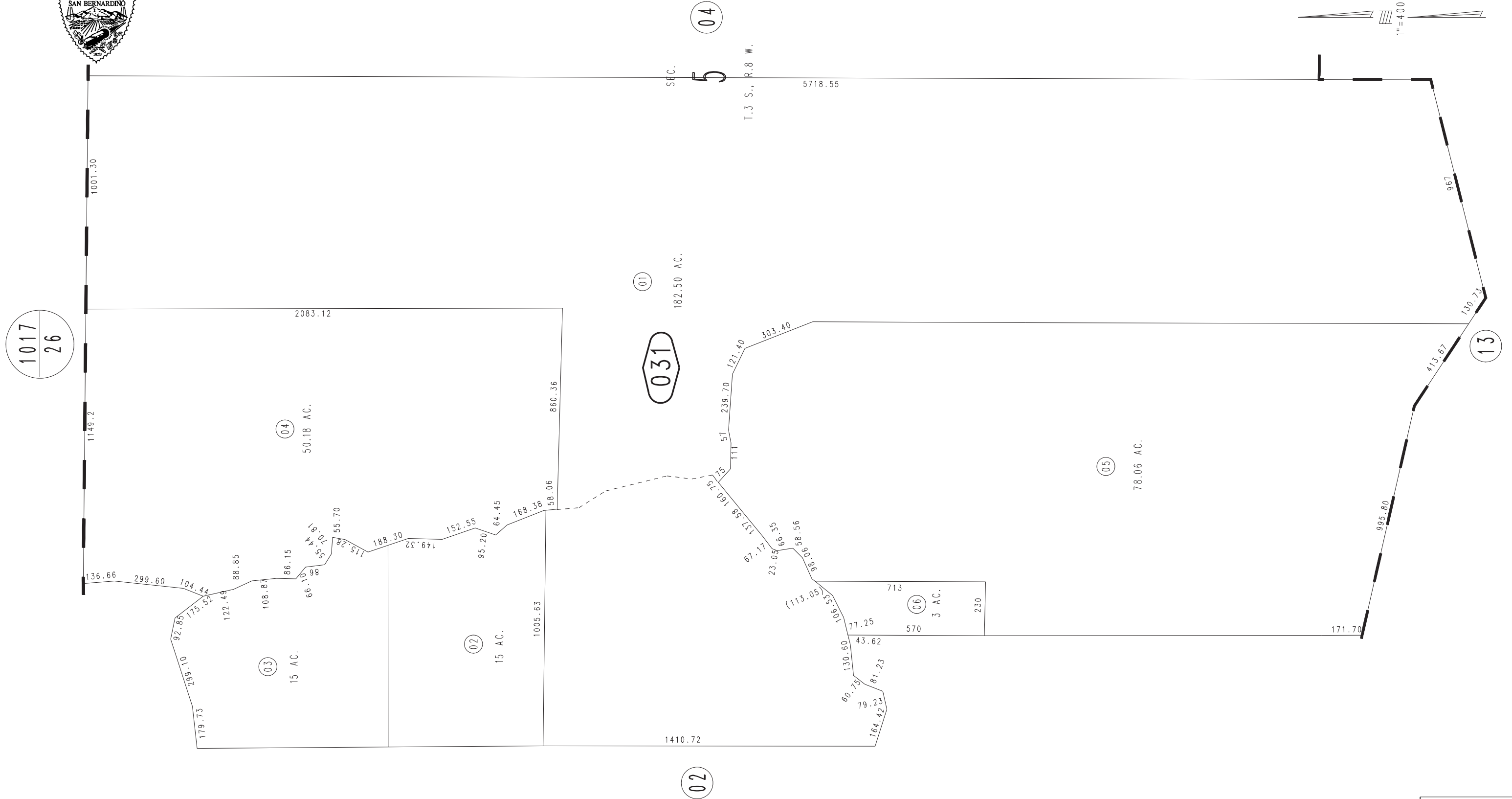
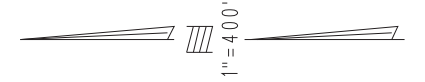


THIS MAP IS FOR THE PURPOSE  
OF AD VALOREM TAXATION ONLY.

Ptn. Sec. 5,6 & 8, T.3 S., R.8 W., S.B.M.

City of Chino Hills  
Tax Rate Area  
24035

1033 - 03



OCT. 1951

Assessor's Map  
Book 1033 Page 03  
San Bernardino County

REVISED  
01/30/90 JAJ  
03/18/93 BLB  
08/23/04 AL