

THIS MAP IS FOR THE PURPOSE OF AD VALOREM TAXATION ONLY.

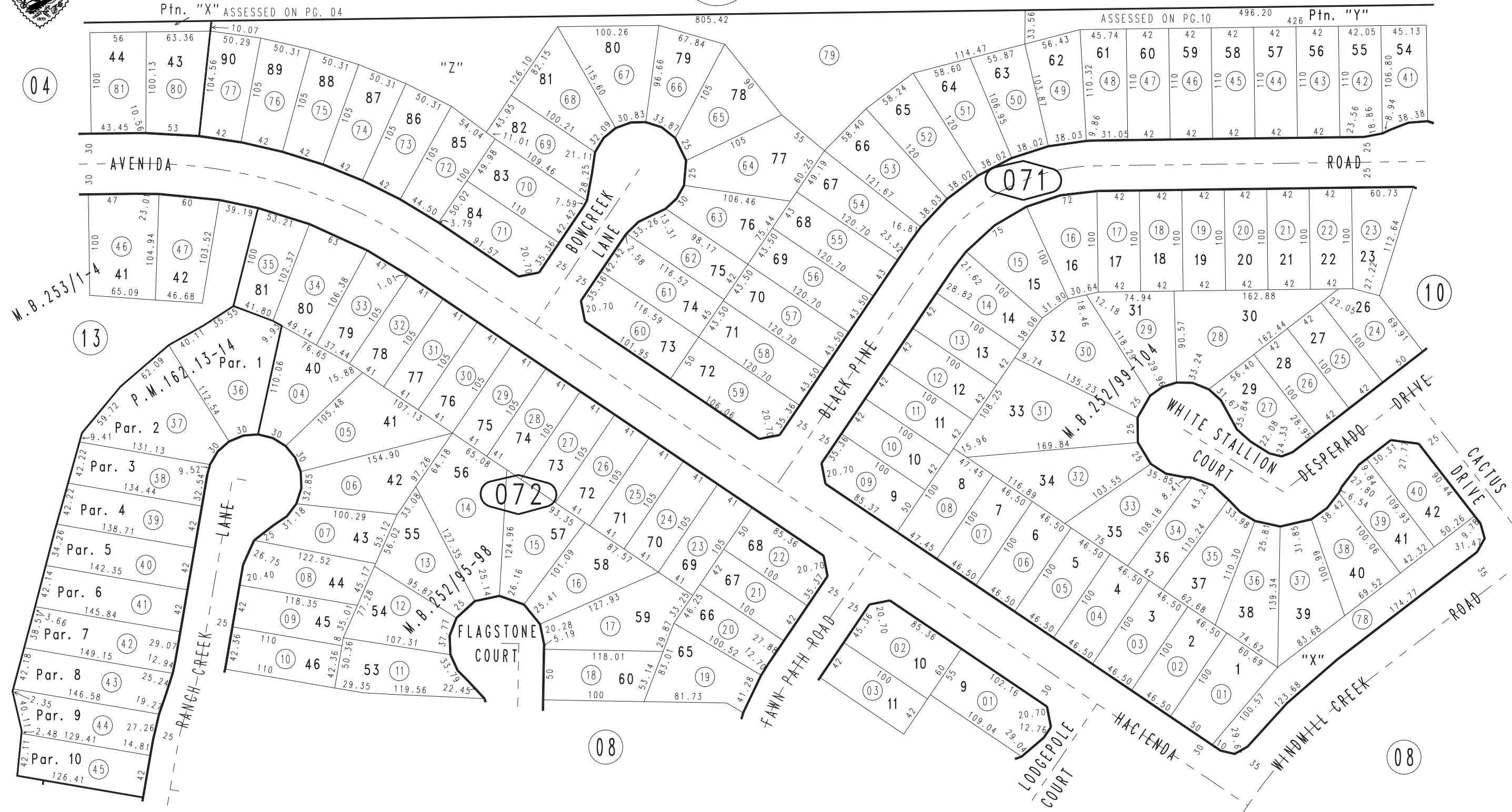
# Ptn. Tract No. 13915-2, M.B. 226/67-69 Amending Map, M.B. 252/95-98

City of Chino Hills  
Tax Rate Area  
24068

1032 - 07



1024  
01



NOV. 1991

Ptn. Parcel Map 13532, P.M.162/13-14  
 Ptn. Tract No. 13915-4, M.B. 228/12-14, Amending Map, M.B. 253/1-4  
 Ptn. Tract No. 13915-3, M.B. 226/70-74, Amending Map, M.B. 252/99-104

Ptn. N.E. 1/4, Sec. 19  
 T.2 S., R.8 W.

Assessor's Map  
 Book 1032 Page 07  
 San Bernardino County

REVISED  
 11/08/91 BLB  
 06-01-93 AL