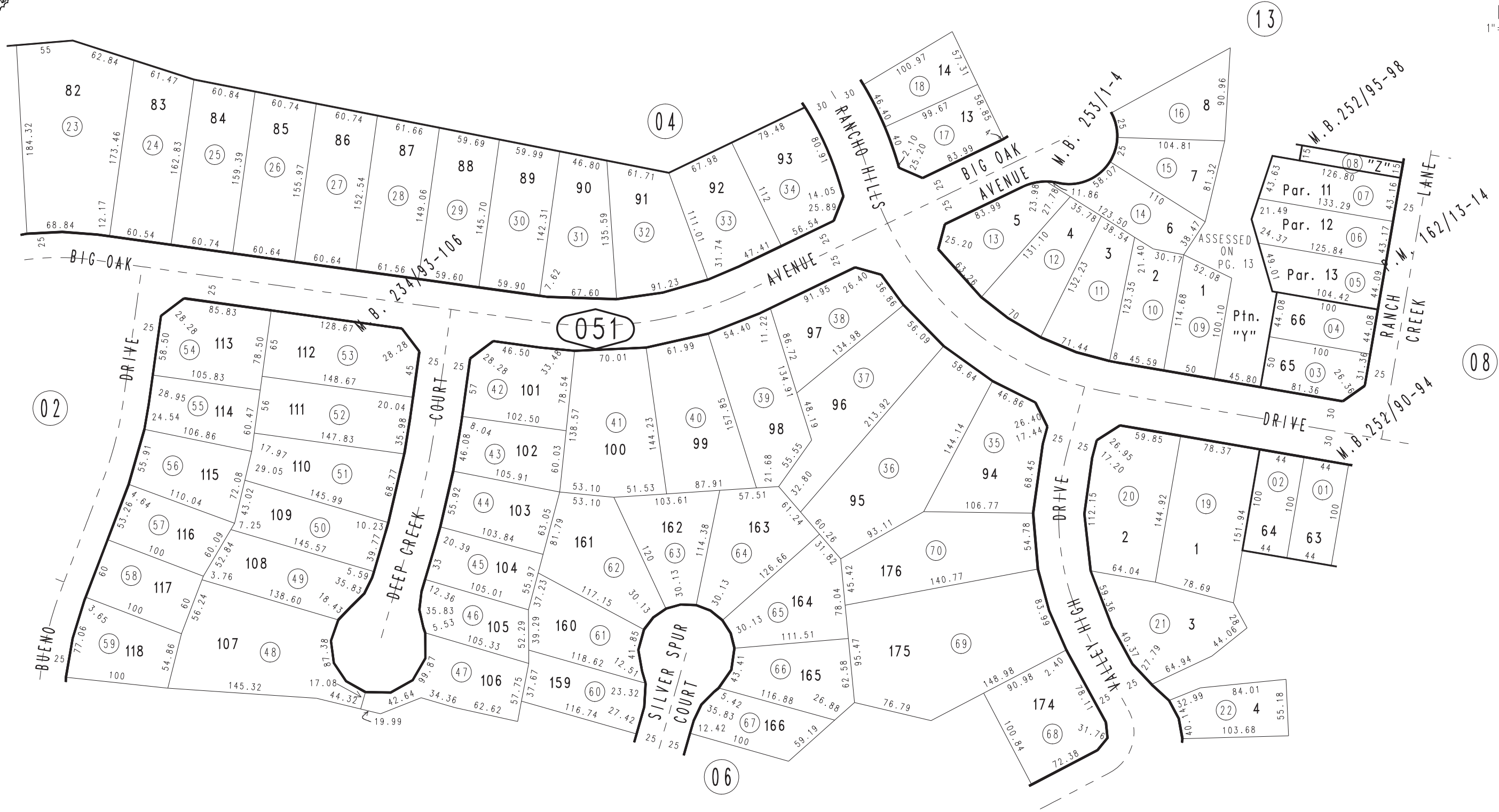


THIS MAP IS FOR THE PURPOSE
OF AD VALOREM TAXATION ONLY.

Ptn. Tract No. 13915-1, M.B. 226/63-66 Amending Map, M.B. 252/90-94

City of Chino Hills
Tax Rate Area
24068

1032 - 05



Ptn. Parcel Map No. 13532, P.M. 162/13-14
 Ptn. Tract No. 13915-5, M.B. 234/93-106
 Ptn. Tract No. 13915-4, M.B. 228/12-14, Amending Map, M.B. 253/1-4
 Ptn. Tract No. 13915-2, M.B. 226/67-69, Amending Map, M.B. 252/95-98

Ptn. N.W. 1/4, Sec. 19
 T.2 S., R.8 W.

Assessor's Map
 Book 1032 Page 05
 San Bernardino County

REVISED
 11/12/91 BLB
 06-01-93 AL