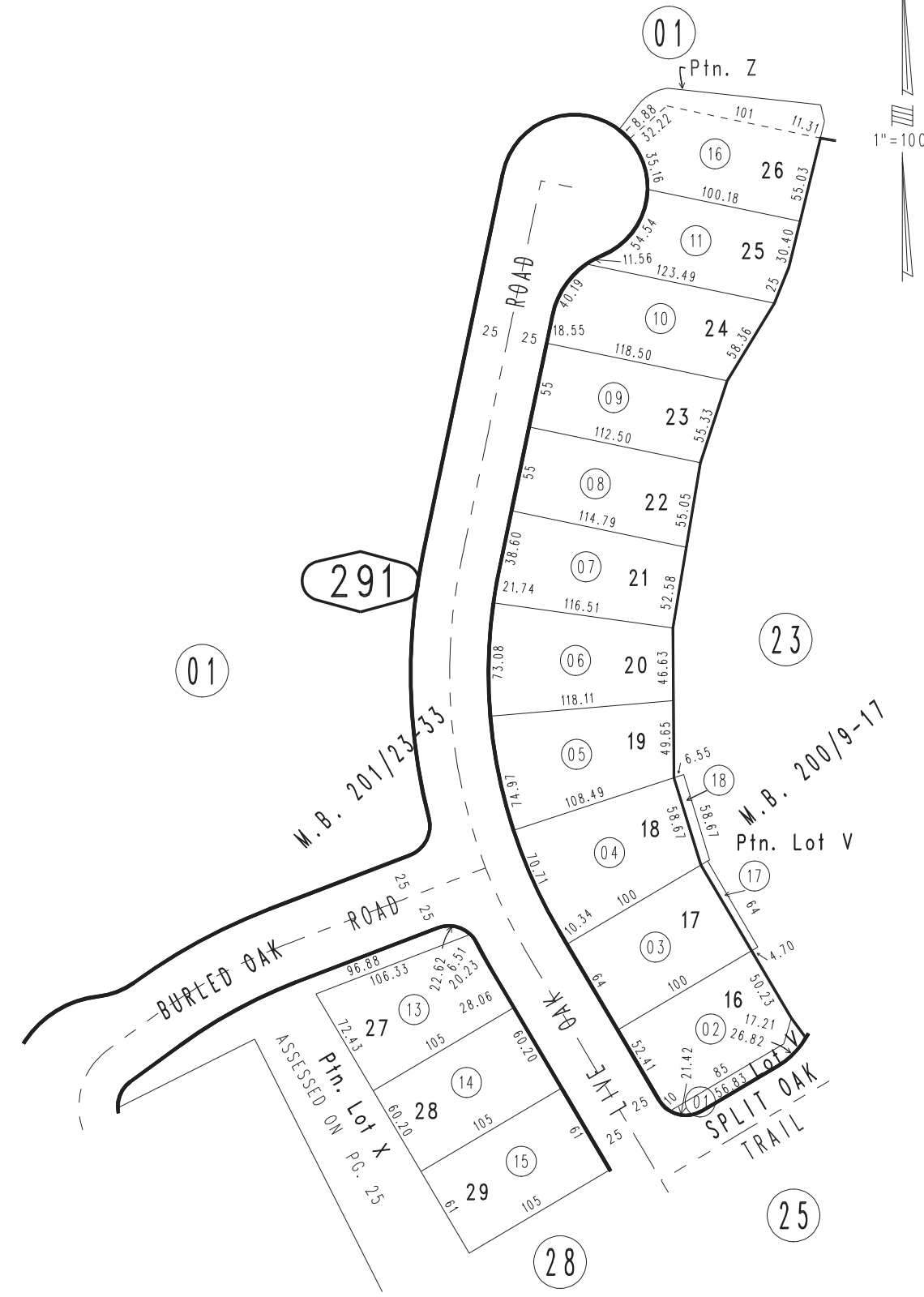


THIS MAP IS FOR THE PURPOSE  
OF AD VALOREM TAXATION ONLY.



Ptn. Tract No. 13313, M.B. 201/23-33  
Amending Map, M.B. 248/92-103

City of Chino Hills 1031 - 29  
Tax Rate Area  
24072



Oct. 1987

Ptn. Tract No. 13313-3, M.B. 200/9-17  
Amending Map, M.B. 217/21-30

Ptn. N.W.1/4, Sec. 29  
T.2S., R.8W.

Assessor's Map  
Book 1031 Page 29  
San Bernardino County

REVISED  
07/05/24 RU