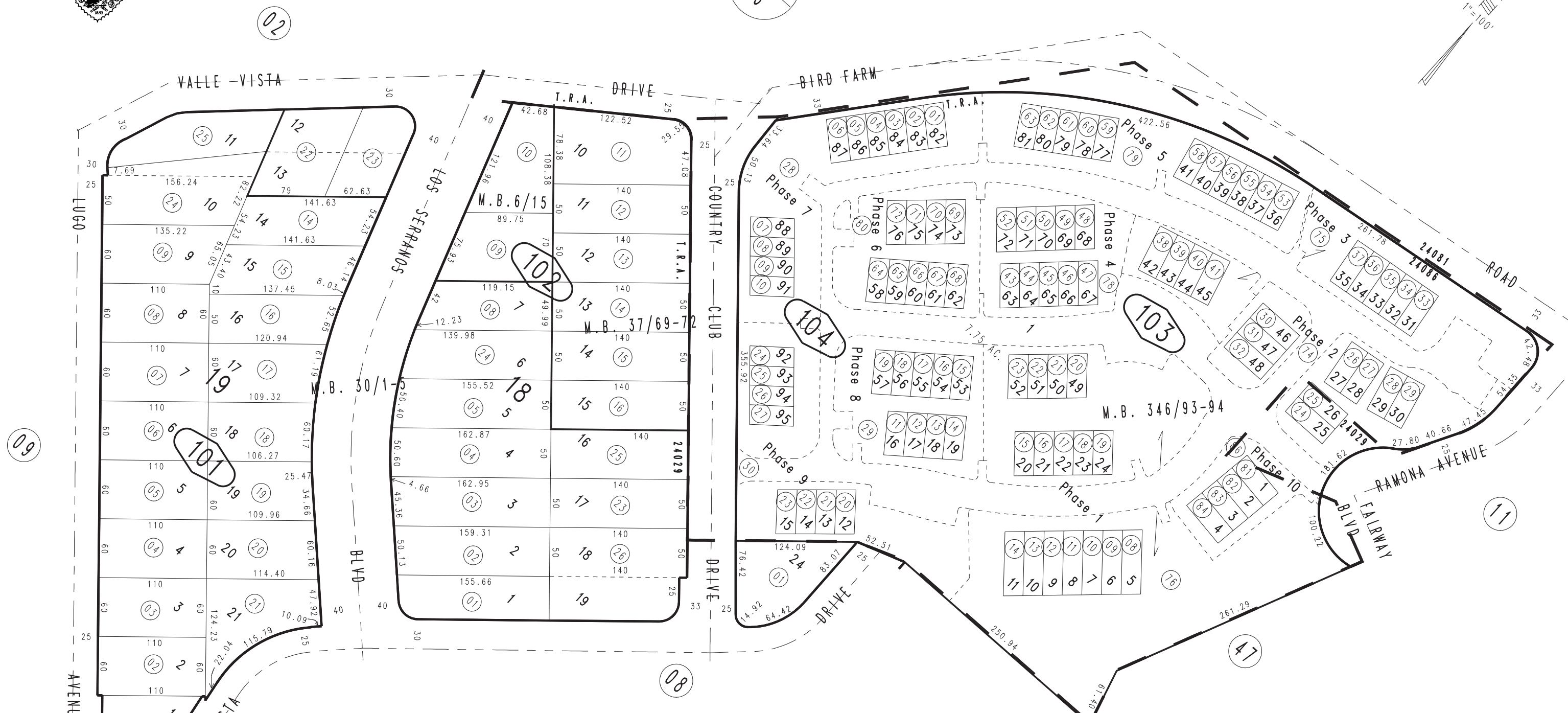
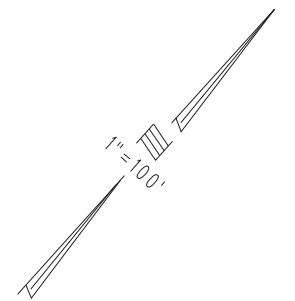


THIS MAP IS FOR THE PURPOSE OF AD VALOREM TAXATION ONLY.

Por. Rancho Santa Del Chino, M.B. 6/15

City of Chino Hills
Tax Rate Area
24029,24081,24086

1028 - 10



Tract No. 17362, M.B. 346/93-94, Condo Plan 2018-0153820 Phase 1
 Condo Plan 2018-0153822 Phase 2, Condo Plan 2018-0153823 Phase 3
 Condo Plan 2018-0384581 Phase 4, Condo Plan 2018-0384582 Phase 5
 Condo Plan 2018-0384583 Phase 6, Condo Plan 2019-0447172 Phase 7
 Condo Plan 2019-0447173 Phase 8, Condo Plan 2019-0447174 Phase 9
 Condo Plan 2020-0455853 Phase 10
 Ptn. Tract No. 2650, M.B. 37/69-72
 Ptn. Tract No. 1932, M.B. 30/1-5

SEPT. 1972

Ptn. N.1/2, Sec. 27
T.2S., R.8W.

Assessor's Map
Book 1028 Page 10
San Bernardino County

REVISED	
03/03/20	GW
09/09/20	RU
12/09/20	GW
01/10/22	RU
01/14/22	RU
04/12/22	KA