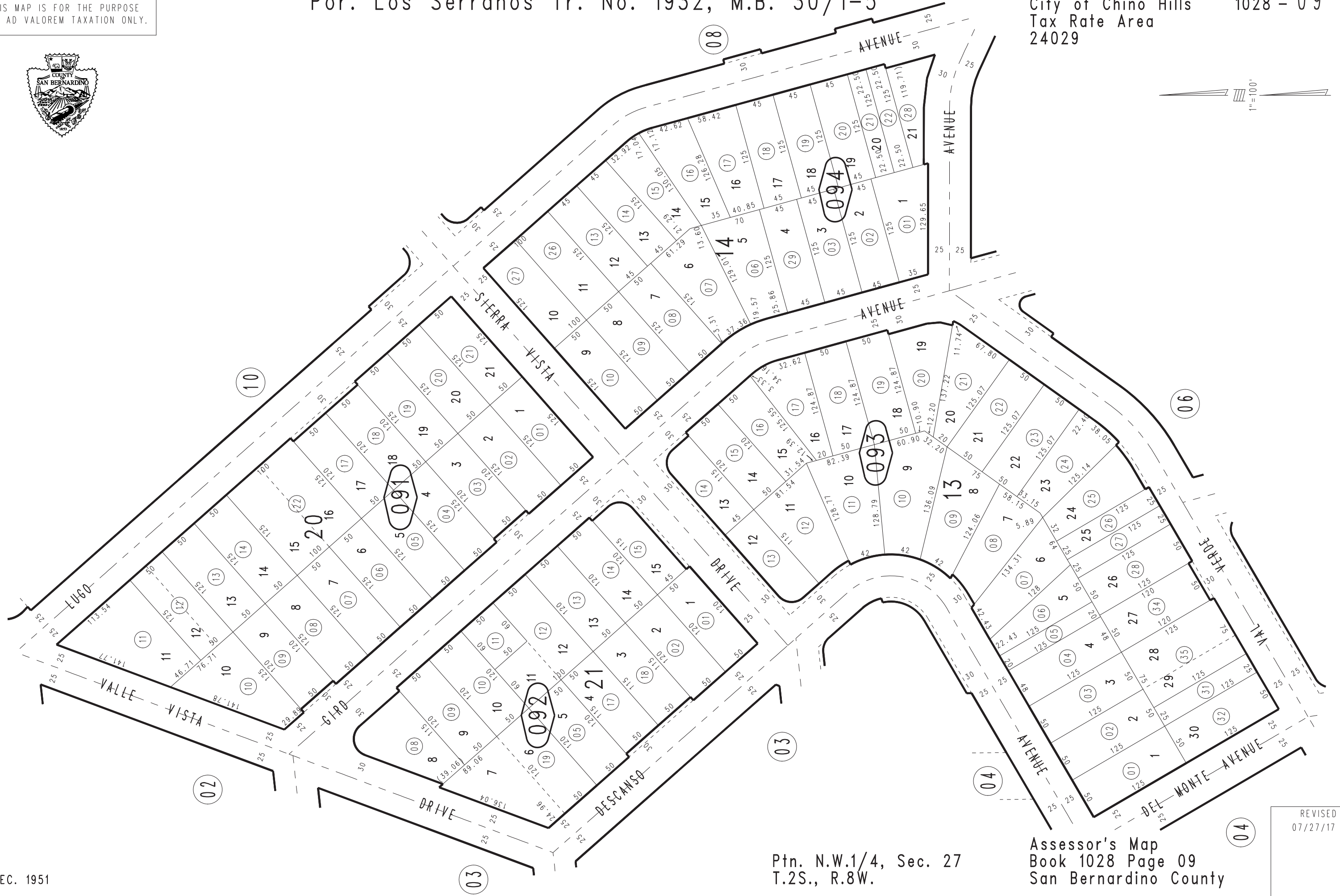


THIS MAP IS FOR THE PURPOSE
OF AD VALOREM TAXATION ONLY.

Por. Los Serranos Tr. No. 1932, M.B. 30/1-5

City of Chino Hills
Tax Rate Area
24029

1028 - 09



DEC. 1951

Ptn. N.W.1/4, Sec. 27
T.2S., R.8W.

Assessor's Map
Book 1028 Page 09
San Bernardino County

REVISED
07/27/17 KC