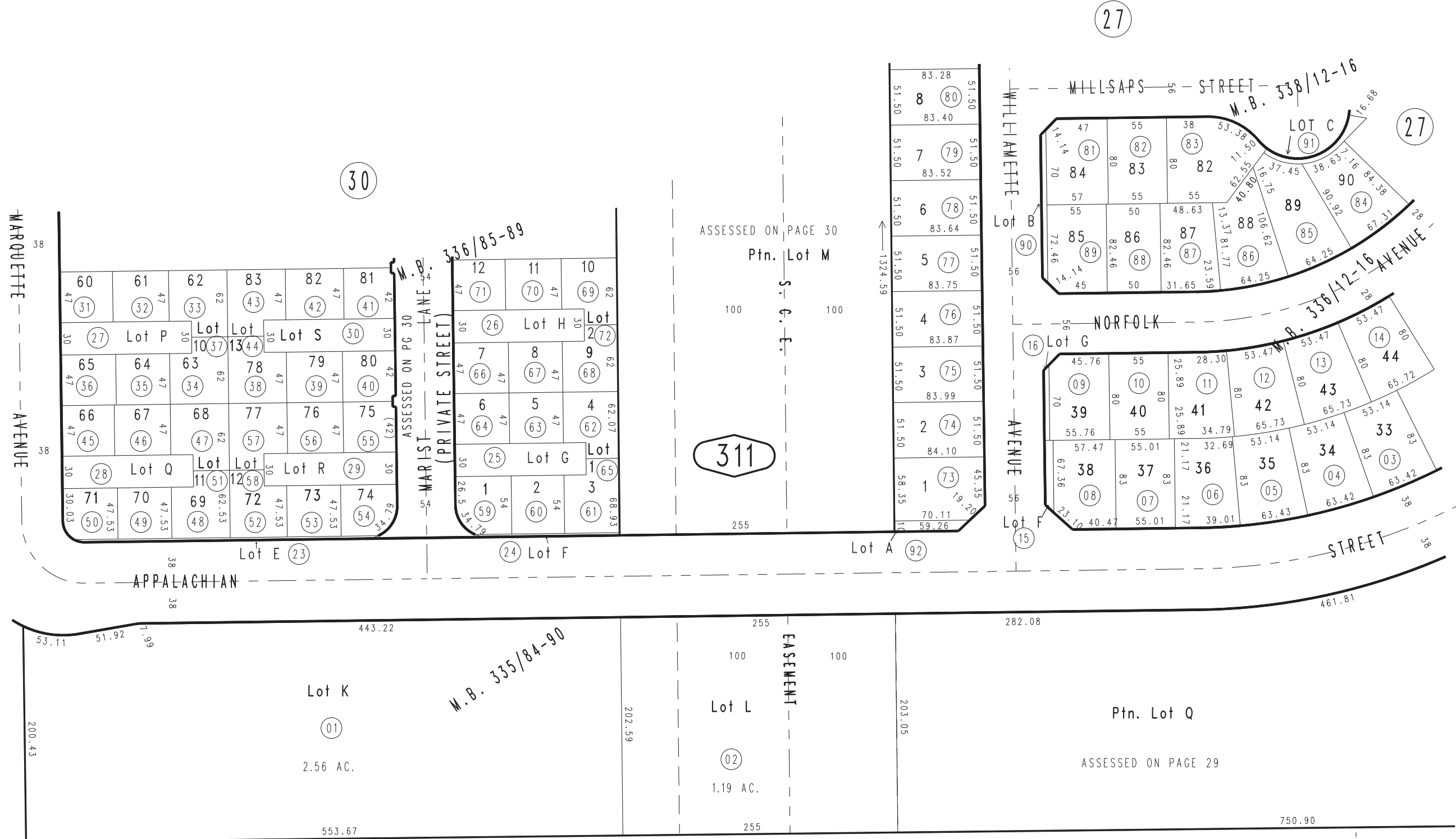


THIS MAP IS FOR THE PURPOSE OF AD VALOREM TAXATION ONLY.

Ptn. Tract No. 16838-2, M.B. 335/84-90

City of Chino
Tax Rate Area
1074

1026 - 31



Ptn. Tract No. 17890, M.B. 338/12-16
 Ptn. Tract No. 18848, M.B. 336/85-89, Condo Plan 13-0080782 Phase 5,
 13-0080783 Phase 6, 13-0080784 Phase 7, 13-0080785 Phase 8
 13-0292041 Phase 9, 13-0292042 Phase 10
 Ptn. Tract No. 17891, M.B. 336/12-16

Ptn. N. 1/2, Sec. 24
 T.2S., R.8W.

Assessor's Map
 Book 1026 Page 31
 San Bernardino County

REVISED
 03/06/13 LH
 03/07/13 LH
 03/08/13 LH
 07/10/13 GW
 07/11/13 GW
 12/26/13 RU