

THIS MAP IS FOR THE PURPOSE OF AD VALOREM TAXATION ONLY.

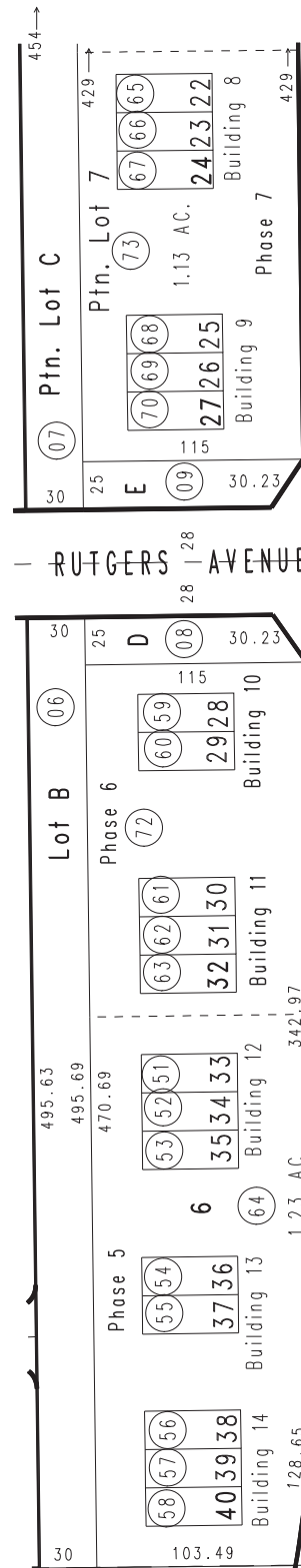


Ptn. Tract No. 16838-2, M.B. 335/84-90

City of Chino
Tax Rate Area
1074

1026 - 27

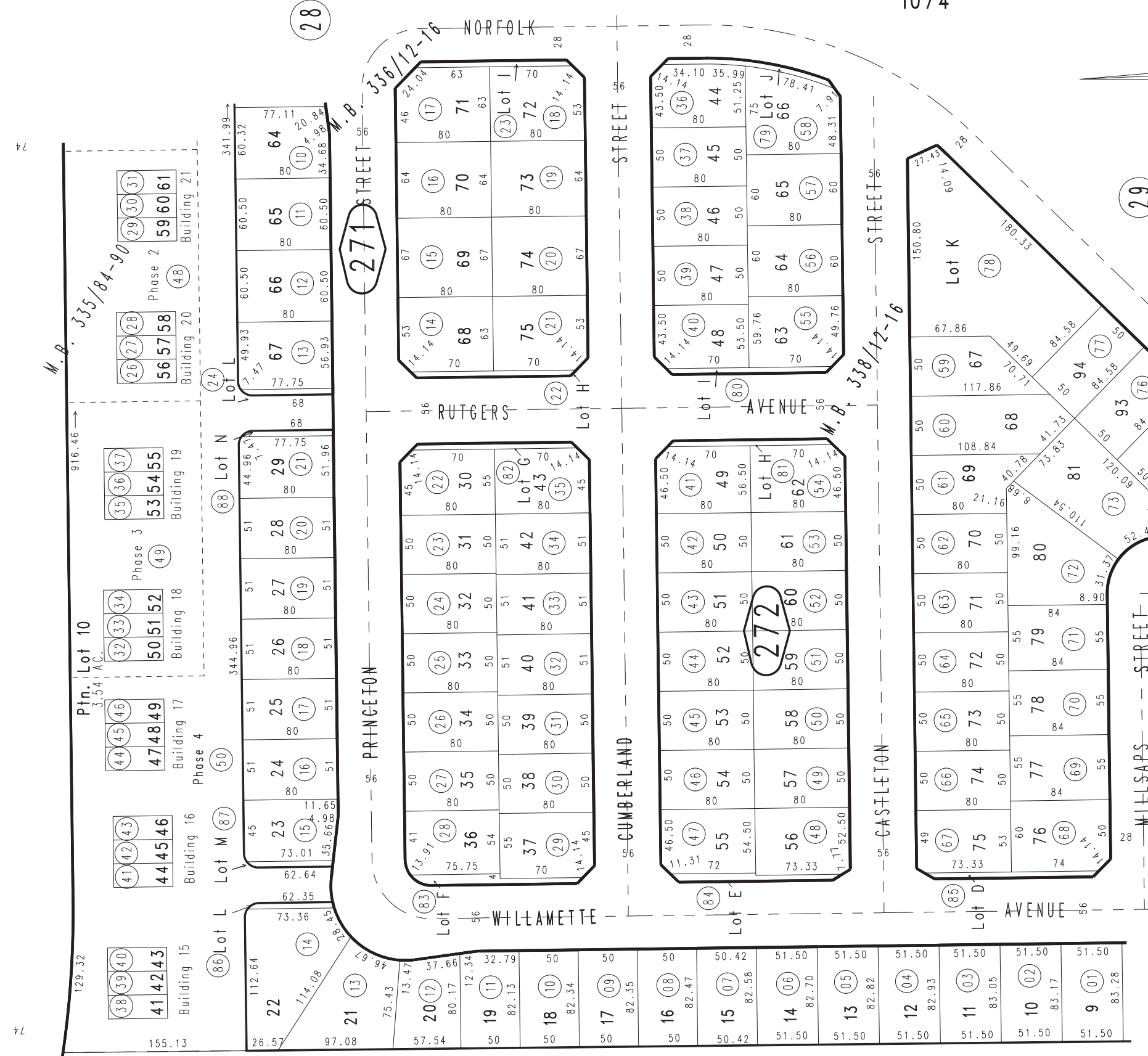
33



05

Ptn. Tract No. 17890, M.B. 338/12-16
April 2012 RU Ptn. Tract No. 17891, M.B. 336/12-16

EUCALYPTUS AVENUE



28

30

Condo Plan, 14-0152880 Phase 7
Condo Plan, 14-0152879 Phase 6
Condo Plan, 14-0152578 Phase 5
Condo Plan, 13-0446613 Phase 2, Phase 3, Phase 4

Ptn. S.E. 1/4, Sec. 13
T.2S., R.8W.

Assessor's Map
Book 1026 Page 27
San Bernardino County

31

REVISED
01/17/14 RU
07/02/14 RU
07/11/14 RU
08/14/14 BK-MC
09/24/14 RU
12/16/14 GW