

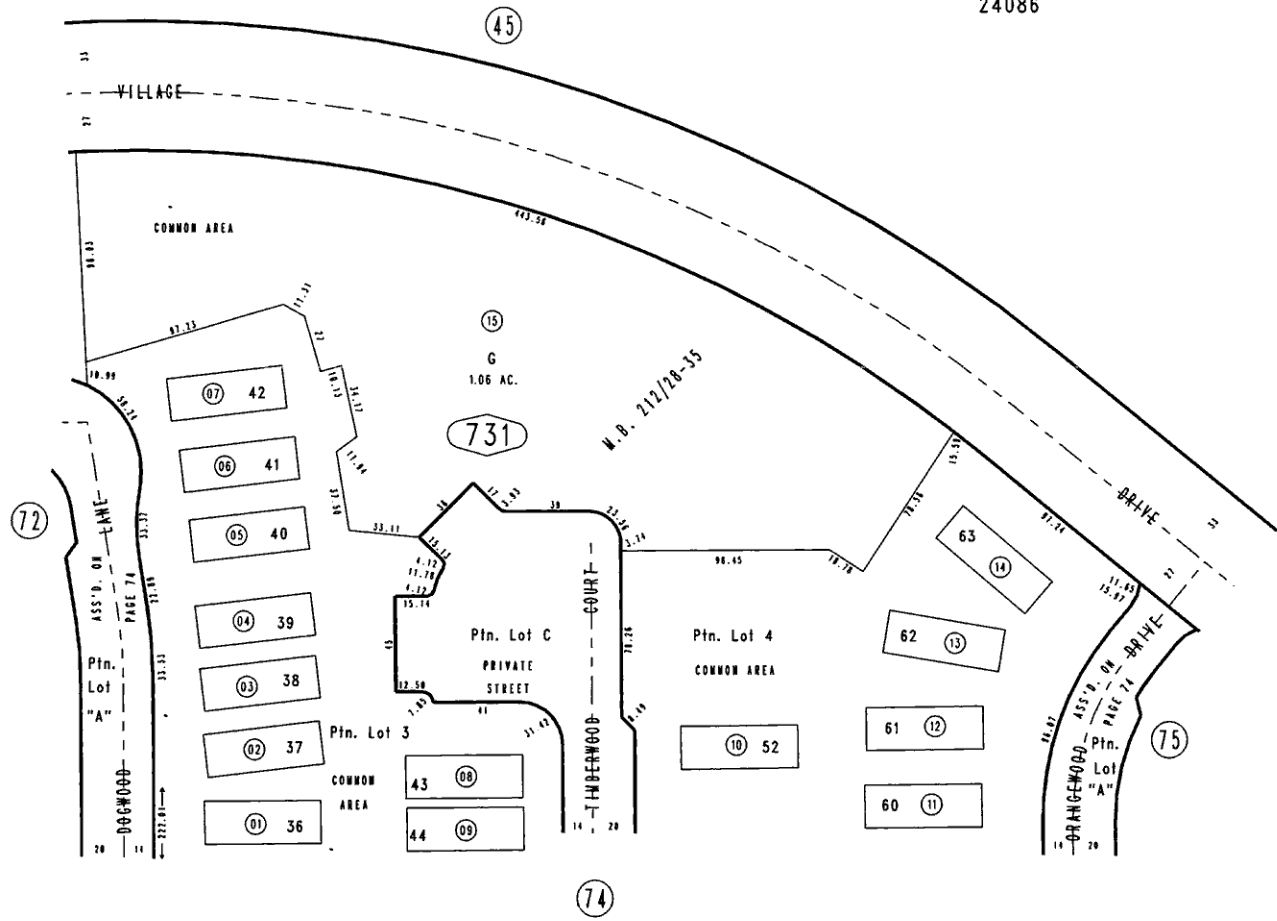
THIS MAP IS FOR THE PURPOSE
OF AD VALOREM TAXATION ONLY.



Ptn. Tract No.9744, M.B.181/3-10, Amending Map, M.B.212/28-35

City of Chino Hills
Tax Rate Area
24086

1025 - 73



DEC. 1986

Condominium Plan, O.R. 86-243298

Ptn. S. W. 1/4, Sec. 22
T.2 S., R.8 W.

Assessor's Map
Book 1025 Page 73
San Bernardino County

REVISED
01/24/90 JAJ
10/24/91 AL
05/12/94 PE