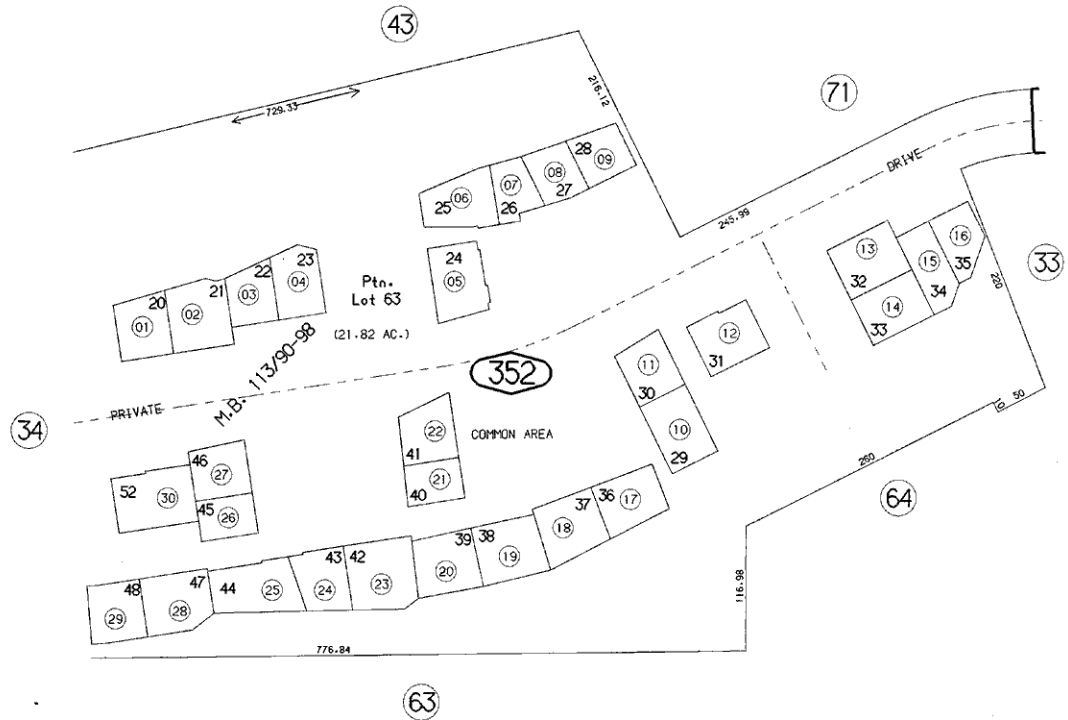


THIS MAP IS FOR THE PURPOSE
OF AD VALOREM TAXATION ONLY.



Ptn. Tract No. 8379, M.B. 113/90-98

City of Chino Hills 1025 - 35
Tax Rate Area
24012



JAN. 1973

Ptn. S. W. 1/4. Sec. 21
T.2 S., R.8 W.

Assessor's Map
Book 1025 Page 35
San Bernardino County

REVISED
01/24/90 JAJ
10/20/91 AL