

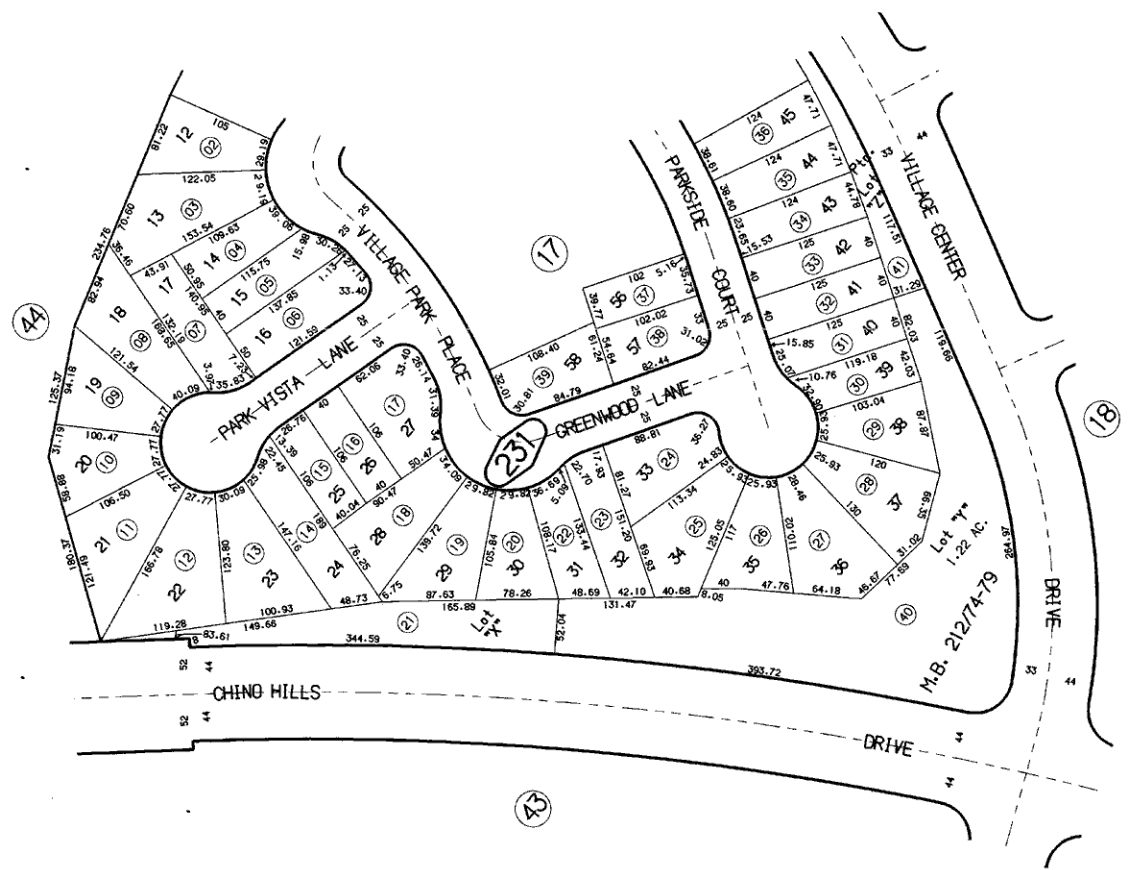
THIS MAP IS FOR THE PURPOSE
OF AD VALOREM TAXATION ONLY.



Ptn. Tract No. 13651-7, M.B. 212/74-79

City of Chino Hills
Tax Rate Area
24068

1024 - 23



NOV. 1988

Ptn. S. 1/2, Sec. 18
T.2 S., R.8 W.

Assessor's Map
Book 1024 Page 23
San Bernardino County

REVISED
01/23/90 JAJ
05/03/92 AL