

THIS MAP IS FOR THE PURPOSE
OF AD VALOREM TAXATION ONLY.

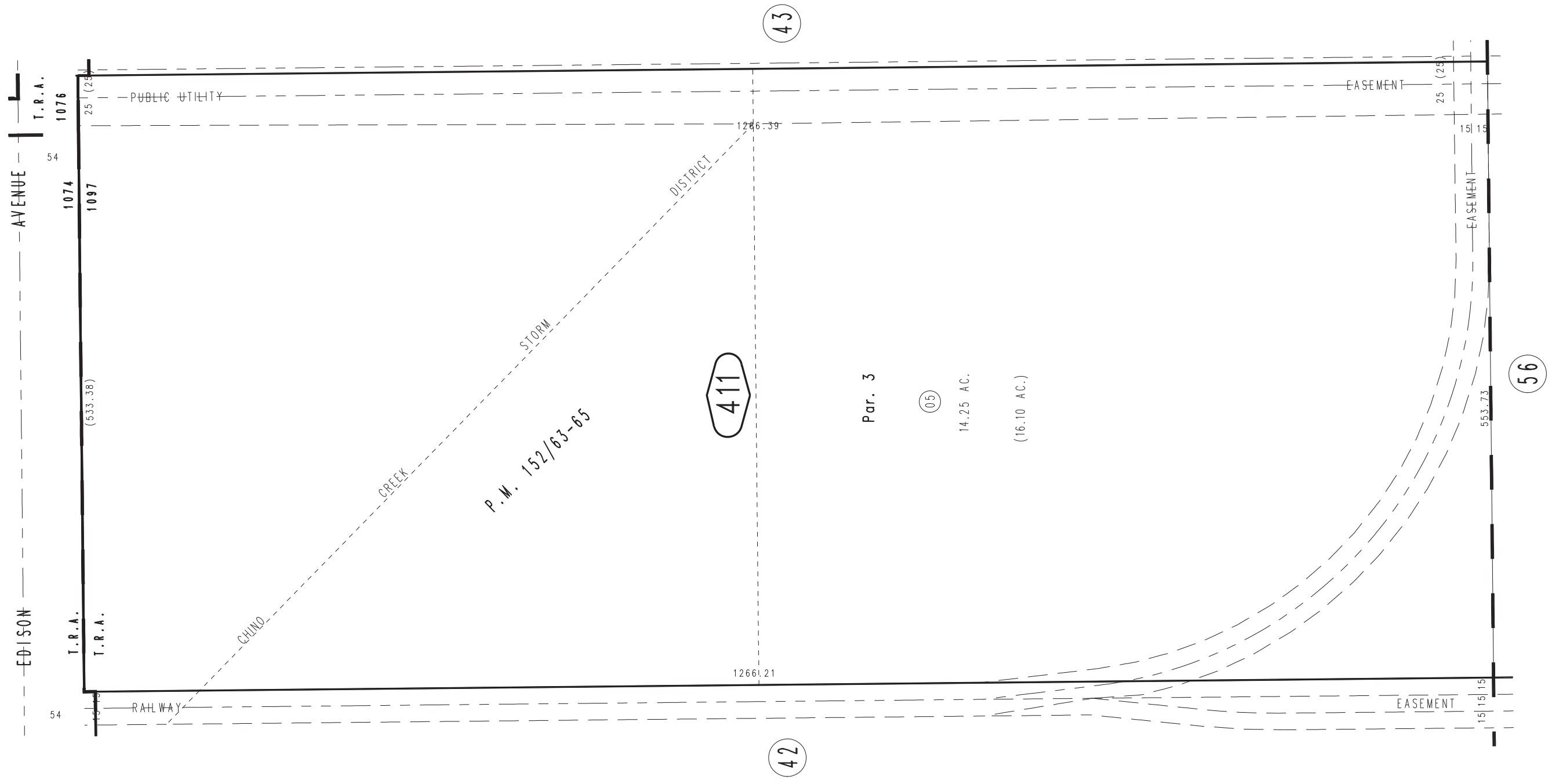
Ptn. Parcel Map No. 13280, P.M. 152/63-65

City of Chino
Tax Rate Area
1074,1076,1097

1022 - 41



23



JULY 1972

Ptn. S.W. 1/4, Sec. 15
T.2S., R.8W.

Assessor's Map
Book 1022 Page 41
San Bernardino County

REVISED
11/8/10 LH