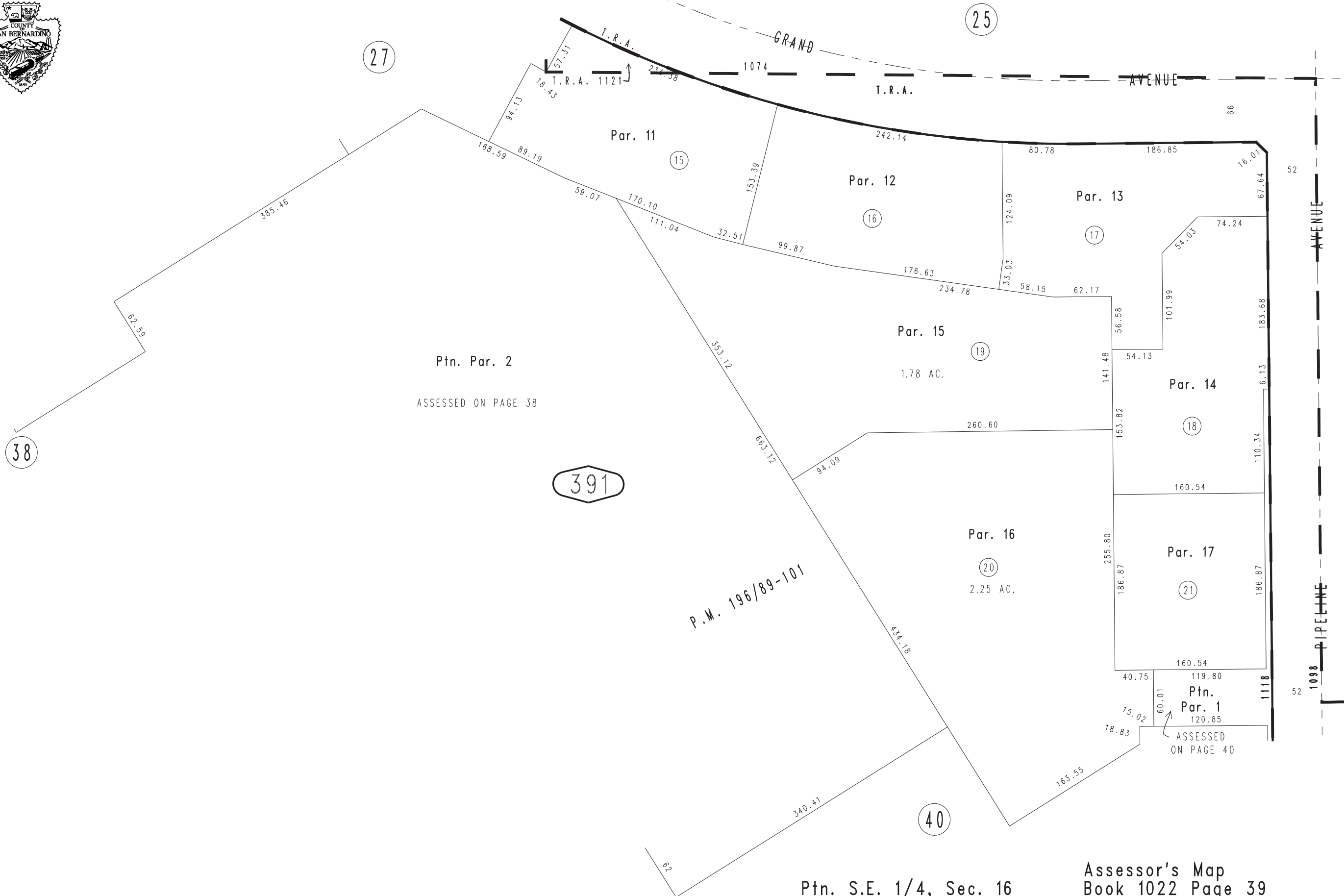


THIS MAP IS FOR THE PURPOSE
OF AD VALOREM TAXATION ONLY.

Ptn. Parcel Map No. 15569, P.M. 191/70-80 Amending Map P.M. 196/89-101

City of Chino
Tax Rate Area
1074,1118,1121

1022 - 39



Ptn. Par. 2
ASSESSED ON PAGE 38

391

P.M. 196/89-101

Par. 15
1.78 AC.

Par. 16
2.25 AC.

Ptn. Par. 1
120.85
ASSESSED ON PAGE 40

Ptn. S.E. 1/4, Sec. 16
T.2S., R.8W.

Assessor's Map
Book 1022 Page 39
San Bernardino County