

THIS MAP IS FOR THE PURPOSE
OF AD VALOREM TAXATION ONLY.

Ptn. W.1/2, N.W.1/4, Sec.14, T.2S.,R.8W., S.B.B.&M.
Ptn. Rancho Santa Ana Del Chino. M.B.6/15

City of Chino
Tax Rate Area
1001,1039

1021 - 01



1020
59

1020
62

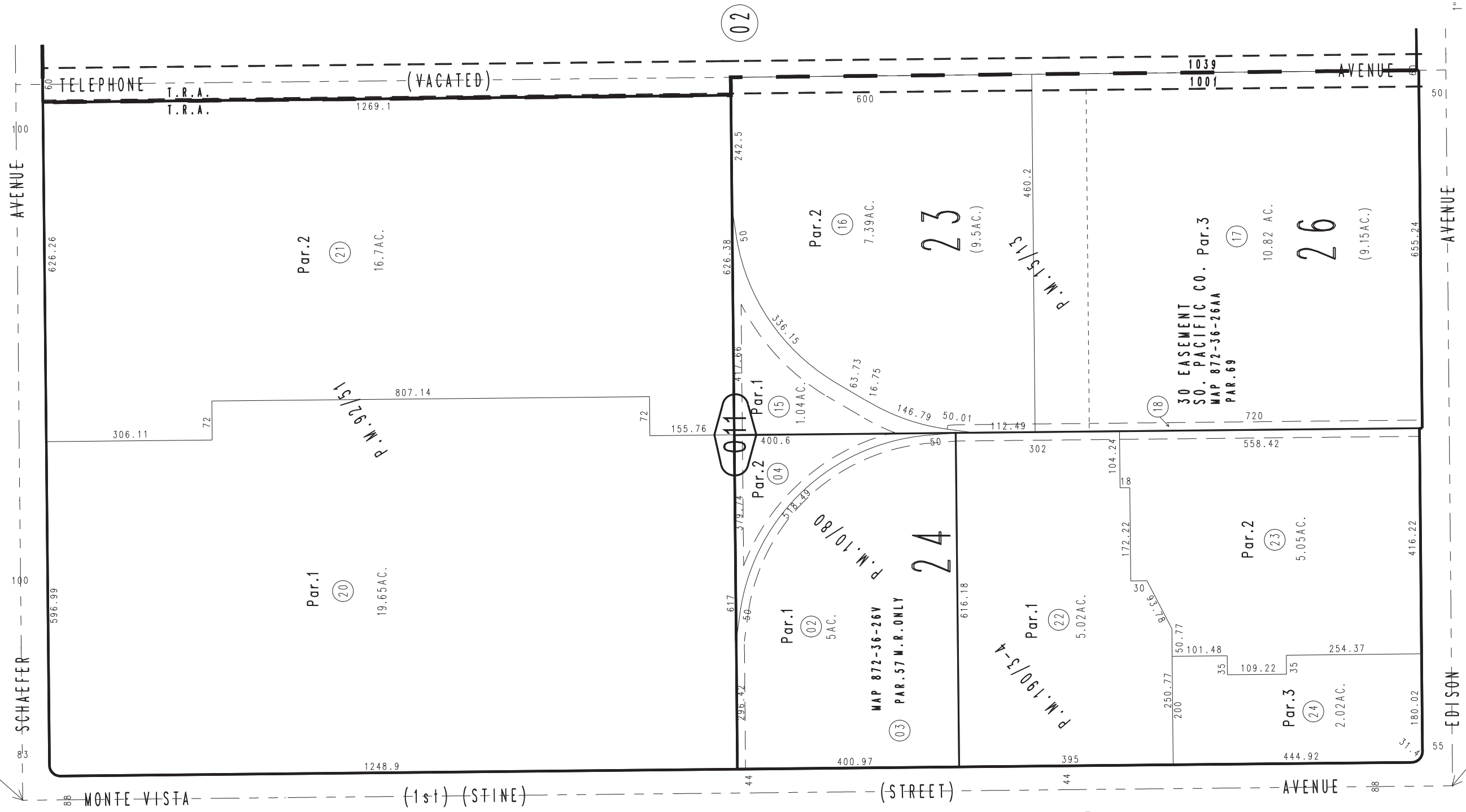
1020
63

1022
15

1022
16

1022
17

39



October 2003

Parcel Map No.8402, P.M.92/51
Parcel Map No.1371, P.M.15/13
Parcel Map No.1208, P.M.10/80

Parcel Map No.15441, P.M.190/3-4

Assessor's Map
Book 1021 Page 01
San Bernardino County

REVISED
02/10/10 LH
11/30/10 LH
09/30/11 BK-MC
07/02/12 KA