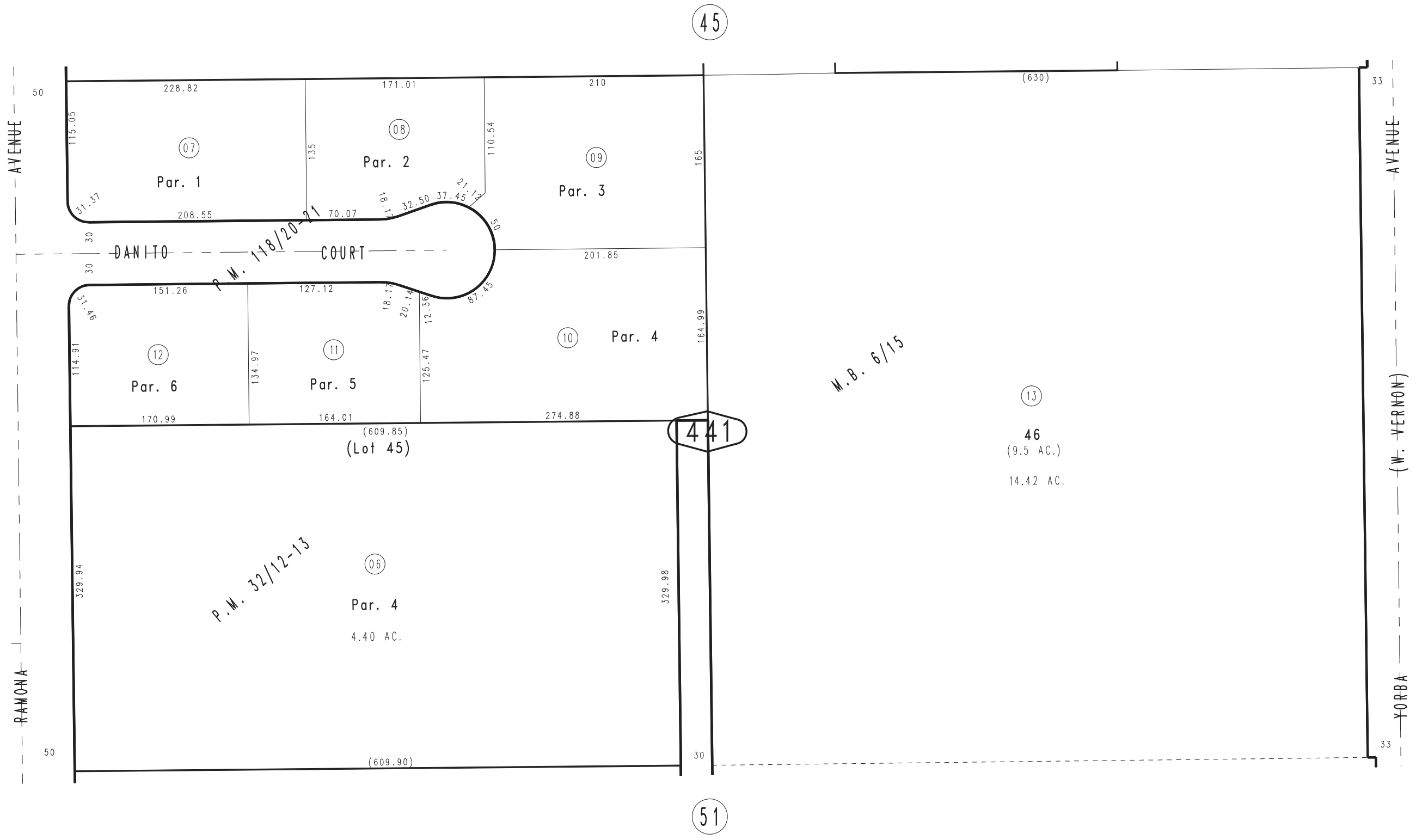


THIS MAP IS FOR THE PURPOSE OF AD VALOREM TAXATION ONLY.

Ptn. Rancho Santa Ana Del Chino, M.B. 6/15

City of Chino
Tax Rate Area
1001

1019 - 44



43

47

51

JAN. 1972

Parcel Map No. 10342, P.M. 118/20-21
Ptn. Parcel Map No. 3511, P.M. 32/12-13

Ptn. S.E.1/4, Sec. 10
T.2S., R. 8W.

Assessor's Map
Book 1019 Page 44
San Bernardino County

REVISED
09/29/22 GW
11/07/22 KA