

Tract No. 10582, M.B. 151/56-60

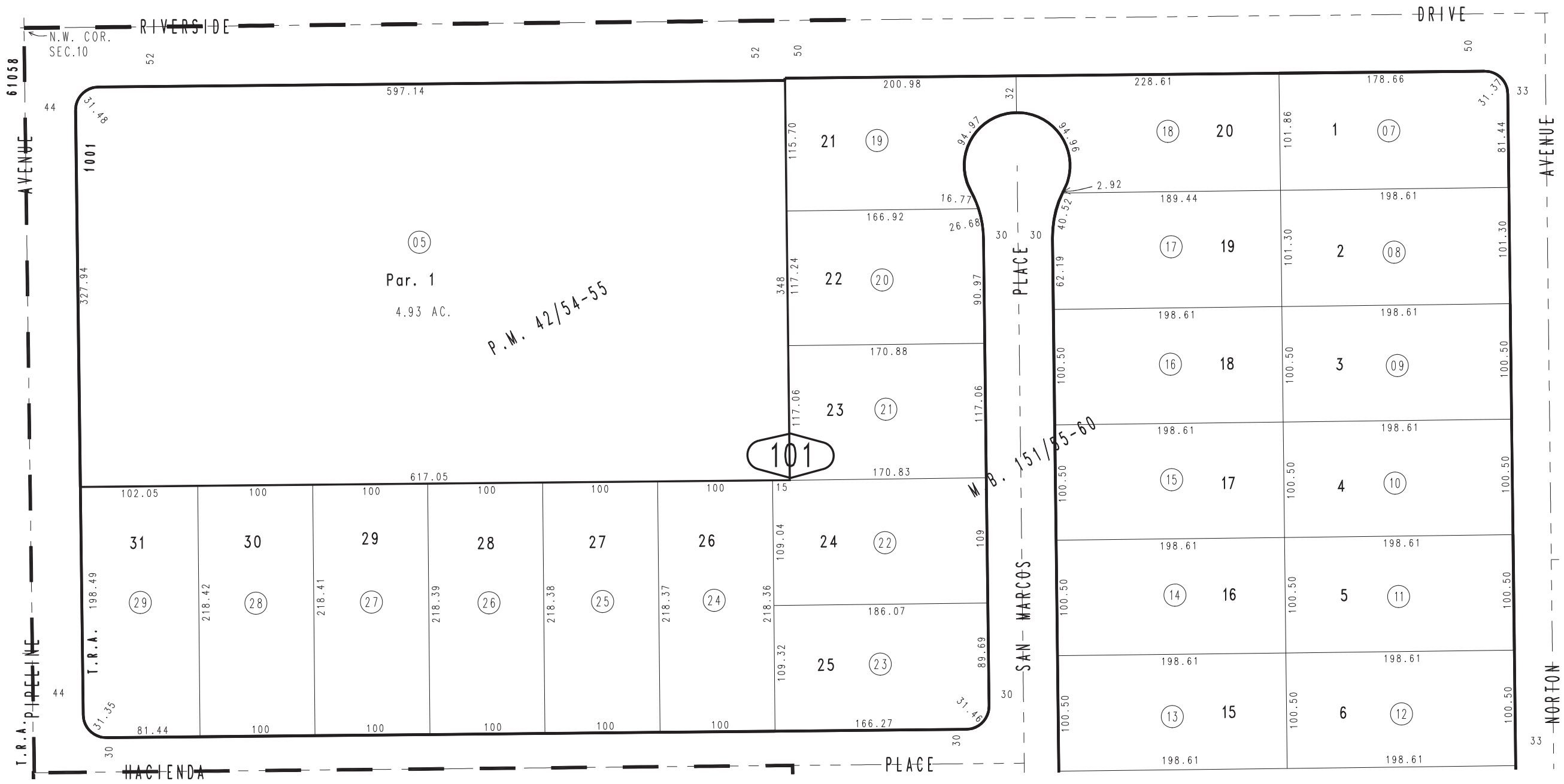
Chino City
Tax Rate Area
1001

1019 - 10

THIS MAP IS FOR THE PURPOSE
OF AD VALOREM TAXATION ONLY.



1016
50



07

11

09

NOV. 1971

Ptn. Parcel Map No. 4695, P.M. 42/54-55

Ptn. N.W.1/4, Sec. 10
T.2S., R.8W.

Assessor's Map
Book 1019 Page 10
San Bernardino County

REVISED
04/18/18 GW-MC