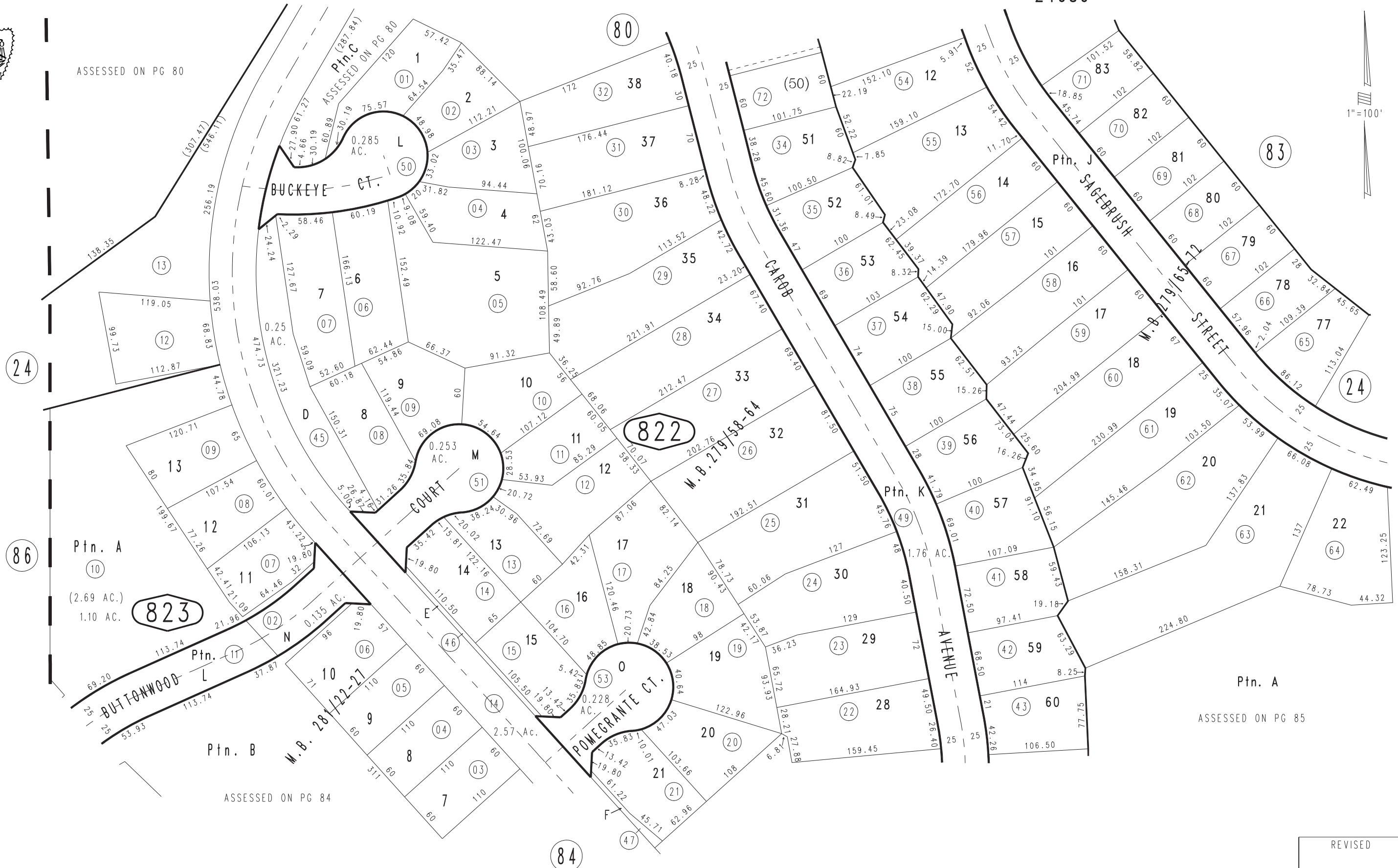


THIS MAP IS FOR THE PURPOSE
OF AD VALOREM TAXATION ONLY.

Ptn. S.E.1/4, Sec. 35, T.2S., R.8W., S.B.M.

City of Chino Hills
Tax Rate Area
24080

1017 - 82



ASSESSED ON PG 80

24

86

823

822

84

83

24

Ptn. Tract No. 14426, M.B. 281/22-27
Ptn. Tract No. 14427, M.B. 279/65-72
Ptn. Tract No. 14426-1, M.B. 279/58-64

December 2000

Assessor's Map
Book 1017 Page 82
San Bernardino County

REVISED