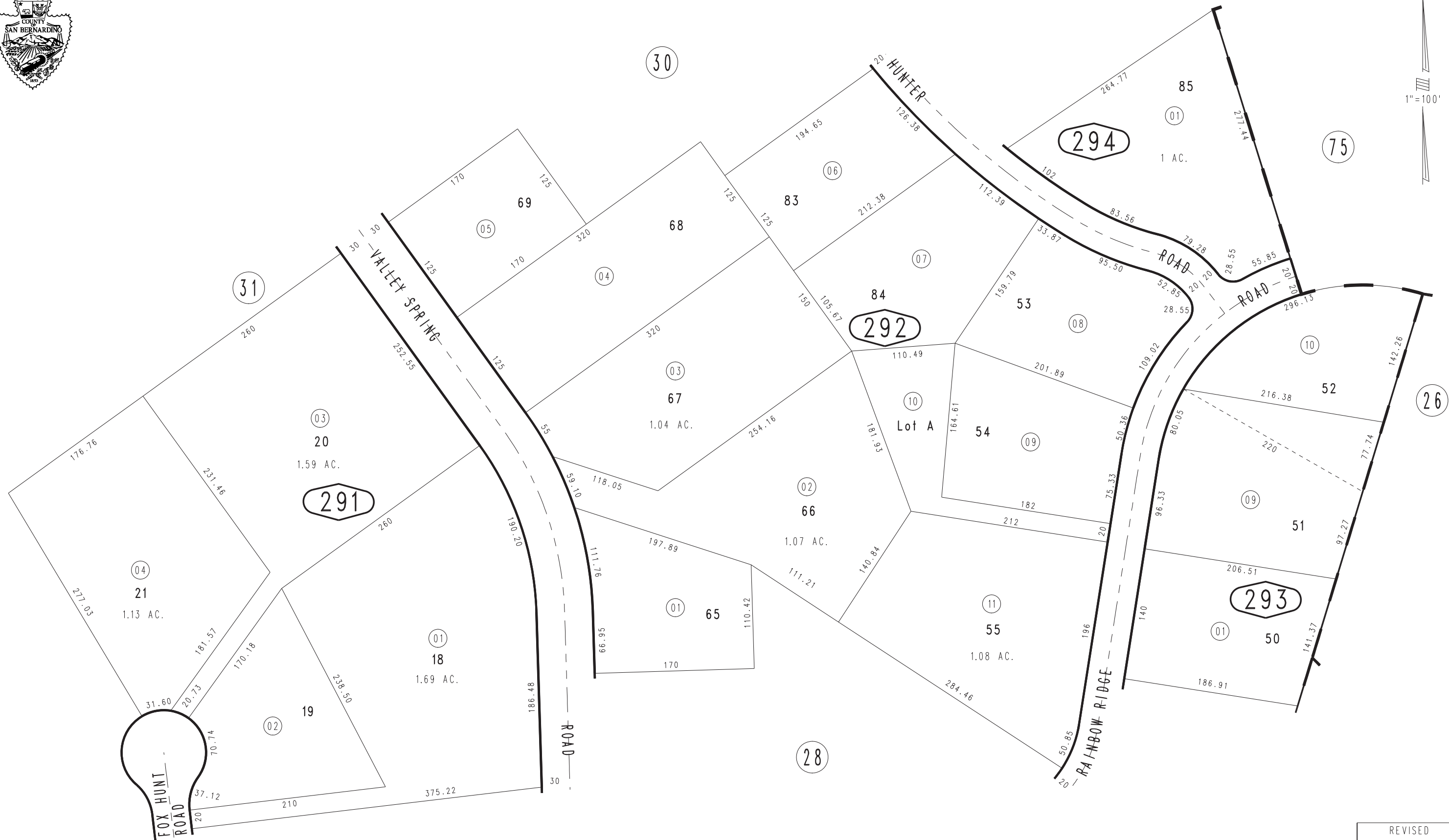


THIS MAP IS FOR THE PURPOSE  
OF AD VALOREM TAXATION ONLY.

Ptn. Tract No. 7062, M.B. 95/59-63

City of Chino Hills  
Tax Rate Area  
24015

1017 - 29



DEC. 1965

Ptn. N.W.1/4, Sec. 31  
T.2S., R.8W.

Assessor's Map  
Book 1017 Page 29  
San Bernardino County

REVISED  
02/28/12 RU  
02/29/12 RU  
08/31/12 RM