

THIS MAP IS FOR THE PURPOSE OF AD VALOREM TAXATION ONLY.



Ptn. Sec.'s 31 & 32, T.2S., R.8W., S.B.&M.

City of Chino Hills 1017 - 26  
Tax Rate Area  
24035 24076 24077 24090 24094

1000  
07

1000  
13

1000  
05

1031  
09

1031  
01

1033  
02

1033  
03

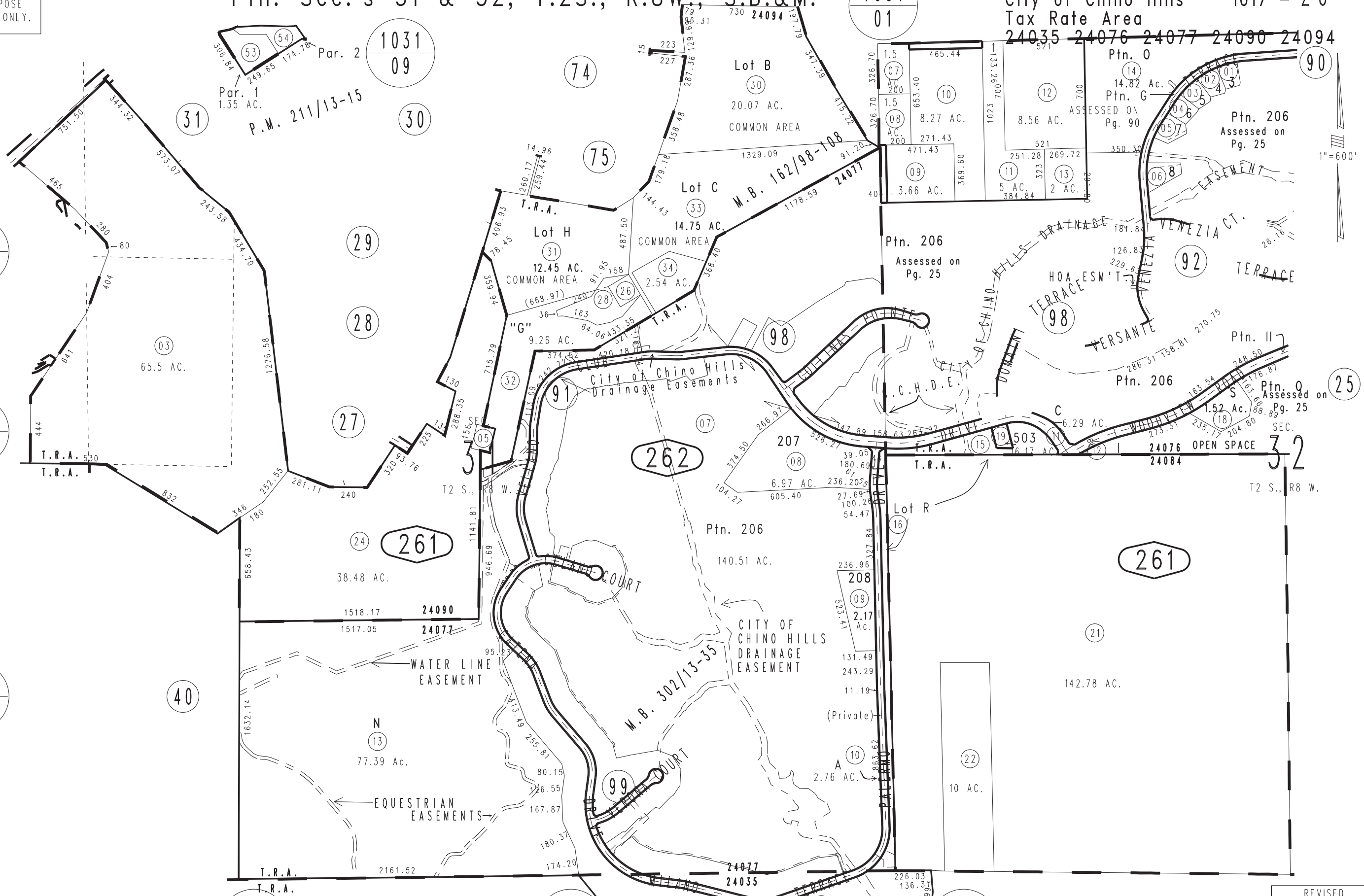
Parcel Map No. 15706, P.M. 211/13-15  
Ptn. Tract No. 15164, M.B. 285/1-22  
Ptn. Tract No. 10379-1, M.B. 162/98-108

Amended Map,  
M.B. 302/13-35

Assessor's Map  
Book 1017 Page 26  
San Bernardino County

SEPTEMBER 1999

REVISED  
02/23/06 KC



1"=600'