

THIS MAP IS FOR THE PURPOSE OF AD VALOREM TAXATION ONLY.



Ptn. Govt. Lot 1, N.E.1/4 Sec.34, T.1S.,R.8W., S.B.B.&M.

Chino Outside Ontario Outside Tax Rate Area 61016,98700

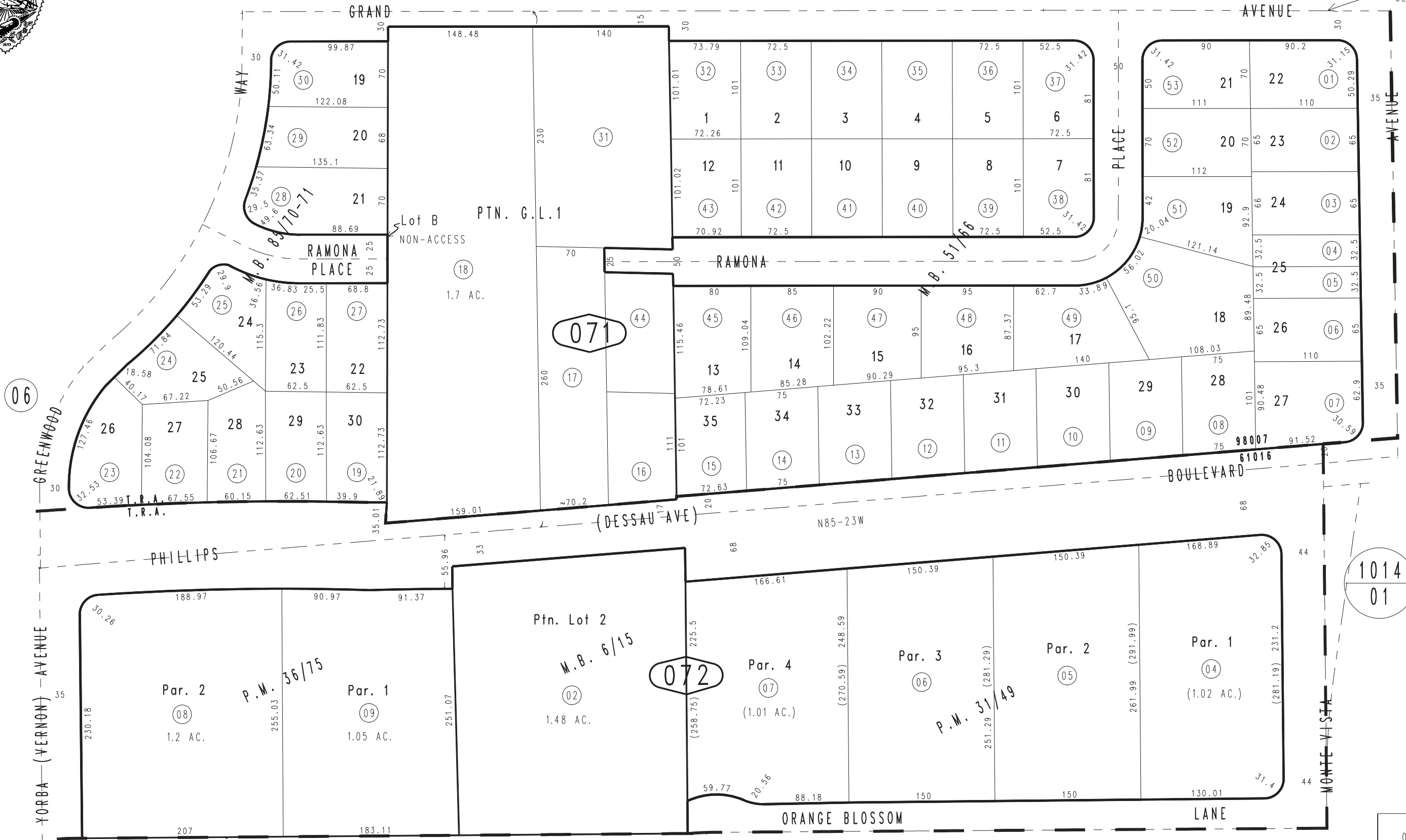
1013 - 07

1012 / 33

1012 / 32

N.E. COR. SEC.34

1"=100'



Parcel Map No. 3485, P.M. 31/49
Tract No. 3976, M.B. 51/66 Ptn. Tract No. 6761, M.B. 85/70-71
Ptn. Rancho Santa Ana Del Chino, M.B. 6/15 Parcel Map No. 3950, P.M. 36/75

Assessor's Map Book 1013 Page 07 San Bernardino County

REVISED 05/14/09 KA 02/04/10 LH