

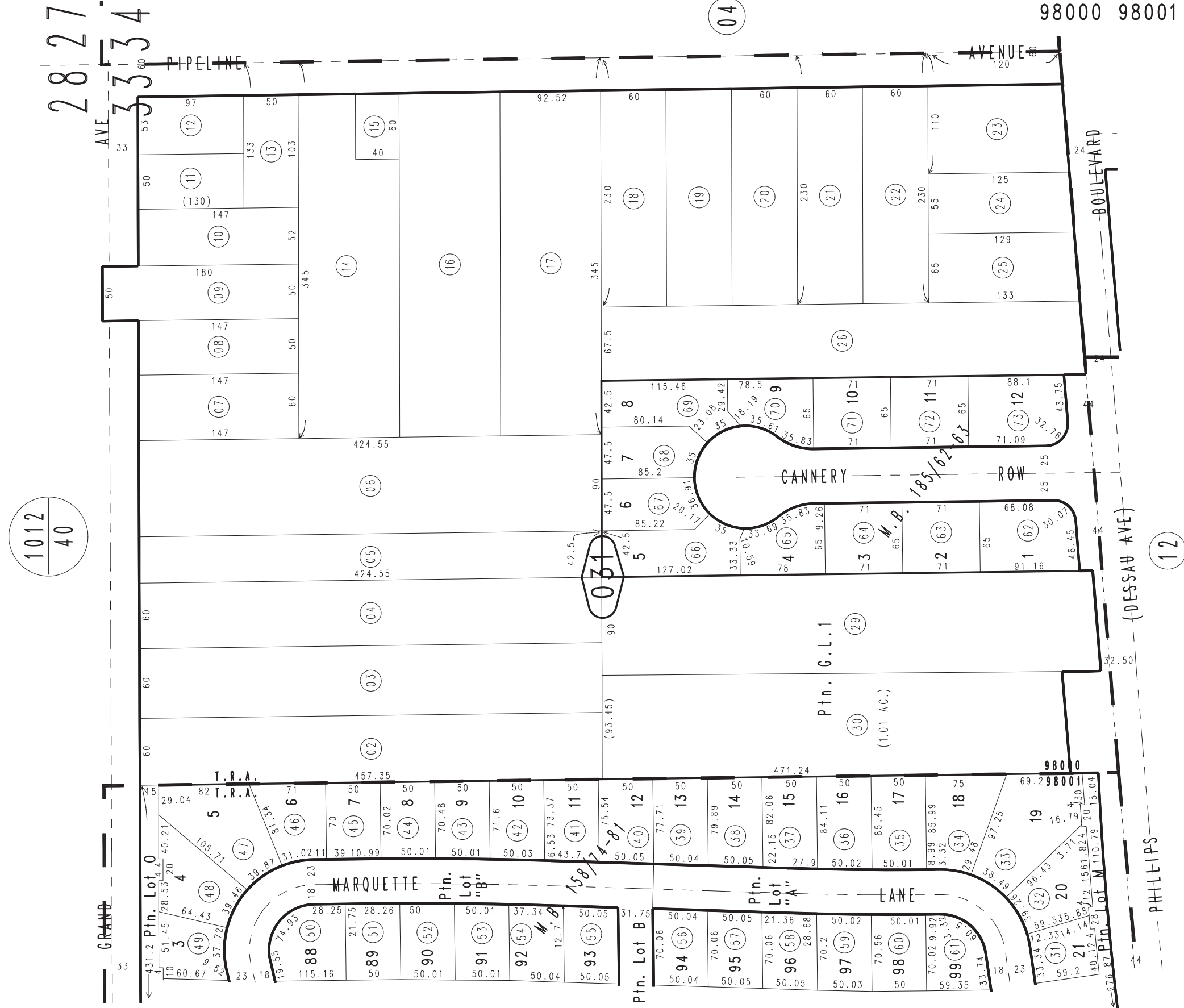
THIS MAP IS FOR THE PURPOSE OF AD VALOREM TAXATION ONLY.



Ptn. Govt. Lot 1, Sec.33, T.1S.,R.8W.

Ontario Outside Tax Rate Area 98000 98001

1013 - 03



1012 / 40

February 2004

Tract No. 12815, M.B. 185/62-63
Ptn. Tract No. 11413, M.B. 158/74-81, Amending Map 160/17-24

Assessor's Map
Book 1013 Page 03
San Bernardino County

REVISED
08/12/21 KA