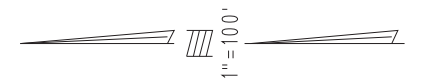


THIS MAP IS FOR THE PURPOSE OF AD VALOREM TAXATION ONLY.



Ptn. E.1/2 G.L. 2, W.1/2 G.L. 1, N.E.1/4 Sec. 33 T.1S.,R.8W.

Ontario Outside 1013 - 02  
Tax Rate Area  
98000 98001

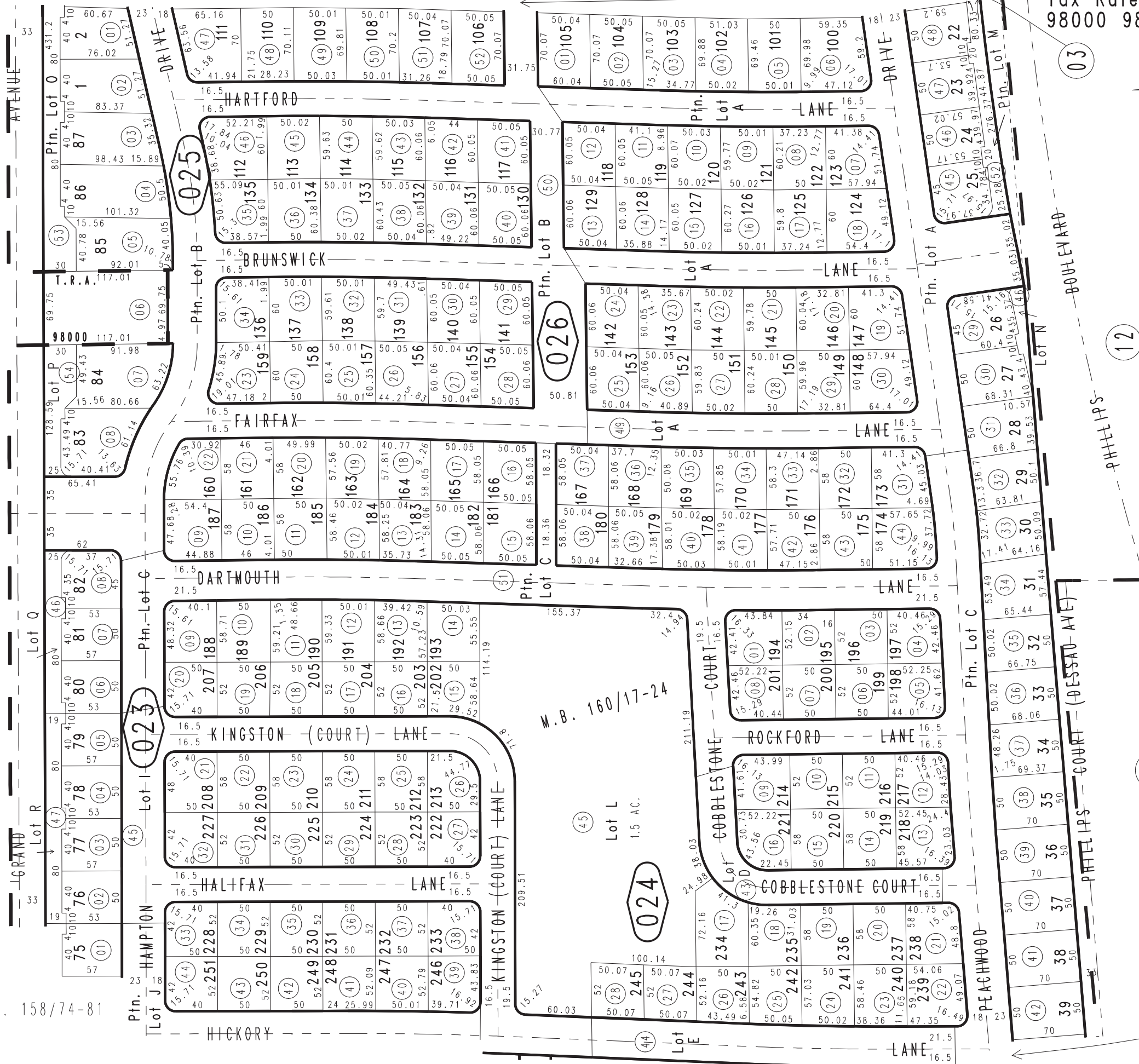


1012 / 41

1012 / 42

Ptn. Tract No. 11413, M.B. 158/74-81  
Amending Map 160/17-24

February 2004



12

13

01

Assessor's Map  
Book 1013 Page 02  
San Bernardino County

REVISED  
01/12/14 BK-MC