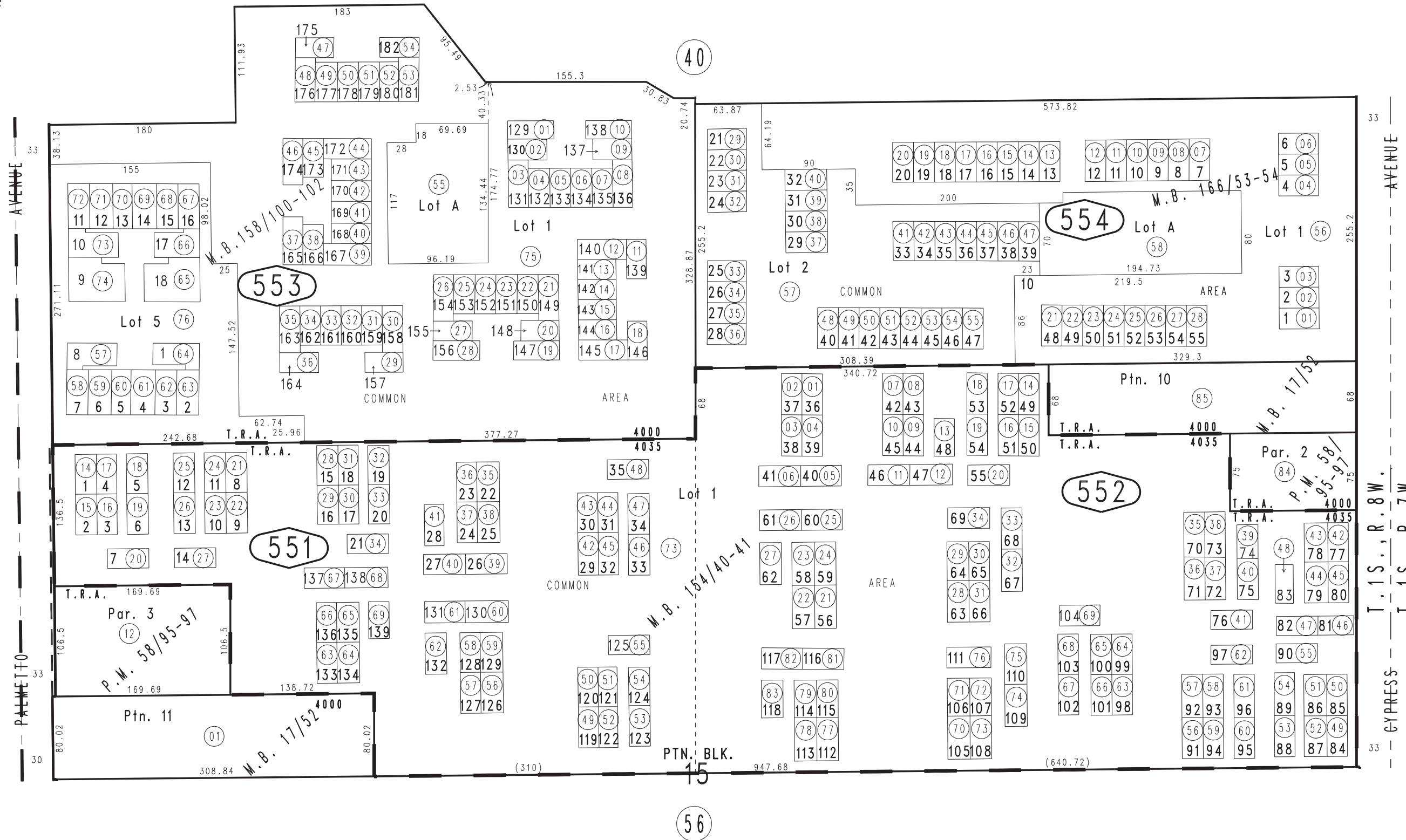


THIS MAP IS FOR THE PURPOSE OF AD VALOREM TAXATION ONLY.

Ptn. Amended Map of a Ptn. Monte Vista Tract No. 2 M.B. 17/52

City of Ontario
Tax Rate Area
4000,4035

1011 - 55



1049
58

Tract No. 11970, M.B. 166/53-54, Condominium Plan O.R. 07-0405577
 Ptn. Tract No. 11545, M.B. 158/100-102, Condominium Plan O.R. 82-082699, 83-053995
 Tract No. 11367, M.B. 154/40-41, Condominium Plan O.R. 81-012058
 Ptn. Parcel Map No. 6091, P.M. 58/95-97

Ptn. S.E.1/4, Sec.25
 T.1S.,R.8W.

Assessor's Map
 Book 1011 Page 55
 San Bernardino County

REVISED
 09/12/07 LH
 10/29/08 GW